



Standard Unit Dimensions:

Length: 2400mm
Width: 2400mm
Height: 2600mm

Cladding Material:



Softwood Timber

Framework Colours/Finishes:



Galvanised Only Finish

Polyester Powder Coat Colours:

RAL 9005 Jet Black	RAL 9016 Traffic White	RAL 7016 Anthracite Grey
RAL 5013 Colbalt Blue	BS 4800 20 C 40 Duchess Blue	BS 4800 00 A 05 Goose Grey
RAL 6005 Green	BS 4800 14 C 39 Holly Green	BS 4800 18 B 25 Admiral Grey
RAL 5015 Sky Blue	RAL 3020 Traffic Red	RAL 1023 Traffic Yellow

The colours shown are a guide only. Please check a colour chart to see the actual colour.

Product Information

The Brise Soleil feature provides shade from the sun and deflects some of the glare from direct sunlight, keeping those beneath it cool. The Palisade Brise Soleil resembles our Blox Range but doesn't provide weather protection or include roof cladding. For an extra layer of protection, fire rated treatment is available for an additional cost.

Features

- Sun breaker canopy
- Modern design
- Contemporary design

Materials Used

- Framework: Mild steel
- Cladding: Softwood timber treated for external use

Framework Finish Options

- Galvanised to BS EN ISO 1461
- Galvanised to BS EN ISO 1461 & Polyester Power Coated

Fire Resistance

Additional treatment available at additional cost

Broxap Limited, Rowhurst Industrial Estate, Chesterton, Newcastle-under-Lyme, Staffordshire, ST5 6BD T: 01782 564411 E: info@broxap.com W: www.broxap.com



ISO 9001
Quality Management Systems
CERTIFIED

ISO 14001
Environmental Management
CERTIFIED

ISO 45001
Occupational Health and Safety Management
CERTIFIED

IRM 202378

EMS 45525

ONS 547979



Guarantees, Warranties, Design-Life and Life-Expectancies

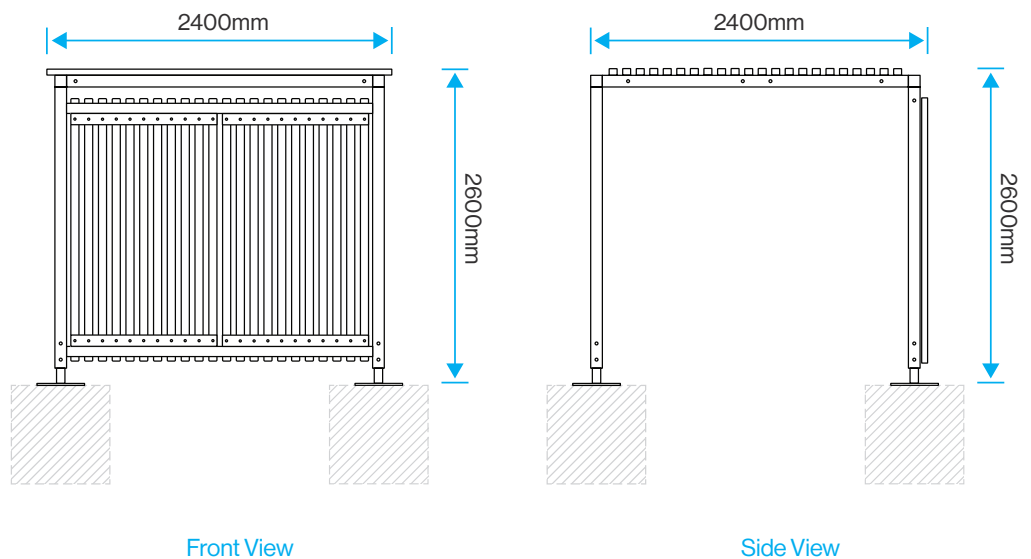
- 25 year structural guarantee*
- 34 year (min) life expectancy for Hot Dip Galvanizing
- 8-10 year life expectancy on standard powder coatings
- 10-15 year life expectancy on Duplex (Zinc Coated) powder coatings
- 10 years' manufacturers guarantees* on timbers & cladding material(s)
- 12 months' warranty* on parts & labour

*Maintenance and other qualifying criteria apply

Options

- Powder coated framework
- Hardwood timber
- Custom sizes available
- LED lighting
- Full installation service

Diagrams



Standard Unit Dimensions:

Length: 2400mm
Width: 2400mm
Height: 2600mm

Cladding Material:



Softwood Timber

Framework Colours/Finishes:



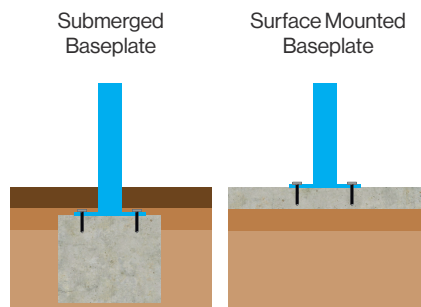
Galvinised Only Finish

Polyester Powder Coat Colours:

RAL 9005 Jet Black	RAL 9016 Traffic White	RAL 7016 Anthracite Grey
RAL 5013 Colbalt Blue	BS 4800 20 C 40 Duchess Blue	BS 4800 00 A 05 Goose Grey
RAL 6005 Green	BS 4800 14 C 39 Holly Green	BS 4800 18 B 25 Admiral Grey
RAL 5015 Sky Blue	RAL 3020 Traffic Red	RAL 1023 Traffic Yellow

The colours shown are a guide only. Please check a colour chart to see the actual colour.

Installation



Broxap Limited, Rowhurst Industrial Estate, Chesterton, Newcastle-under-Lyme, Staffordshire, ST5 6BD T: 01782 564411 E: info@broxap.com W: www.broxap.com



ISO 9001
Quality Management
Systems
CERTIFIED

ISO 14001
Environmental
Management
CERTIFIED

ISO 45001
Occupational
Health and Safety
Management
CERTIFIED

