

Greenfix Silt Curtain

Application and Benefits

Greenfix Silt Curtains are robust for extended life and usage. The curtain is manufactured from woven polypropylene which has been designed to prevent tearing. The curtains are also wedge welded creating virtually indestructible seams. Greenfix Silt Curtains can be deployed time and time again with considerate care making them an economical alternative to other systems.



Product Characteristics

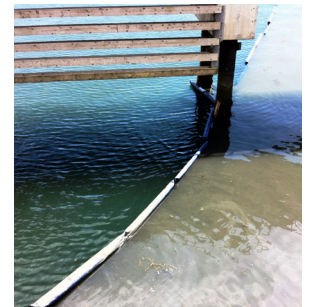
Greenfix Silt Curtains are fabricated from a one-piece geotextile for added strength or in joinable panels to the customer's preference. This product is marginally permeable on deployment but blinds through biofilm accretion within a few days. Although permeable to water it acts as a filter membrane and therefore silt does not pass through it from the outset.

Flotation is created via integral cross-linked closed cell nitrogen foamed polyethylene floats which cannot be punctured or compromised. Displacement values of the floats are according to site conditions – displacement values can be 20kg/m – 145kg/m.

A ballast chain is integral for internal weight. Additional anchor attachments may be required at points along the ballast chain at centres dictated by local conditions.

All other features are dependent on site conditions and should be designed/adapted accordingly.

Greenfix can offer site visits at short notice if the curtain is compromised in any way by boat traffic or any other unforeseen occurrence to promptly rectify the situation.



Mechanical Properties	Test Method	Value
Tensile strength MD	EN ISO 10319	110,0 kN/m
Tensile strength CD	EN ISO 10319	110,0 kN/m
Elongation MD	EN ISO 10319	12,0 %
Static puncture resistance - CBR	EN ISO 12236	12,50 kN
Dynamic perforation resistance – cone drop	EN ISO 13433	10,0 mm
Thickness under 2 kPa	EN 964/1	1,53 mm
Weight	EN 965	464,0 g/m ²
Composition 100% cross woven polypropylene - Durability estimated 5yrs plus in water		