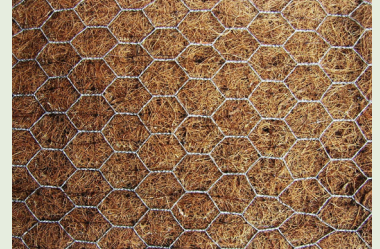


Greenfix Rockmat™ 6D Steel Reinforced Erosion Control Blanket

Application and Benefits

Rockmat 6D combines the benefits of Greenfix Eromat™ with additional steel reinforcement for long term protection to vulnerable slopes. Rockmat 6D is made up of a 100% coir erosion control blanket stitched to a galvanised steel mesh. Due to the steel mesh Rockmat 6D also provides highly effective anti-vermin protection in areas where animals such as rabbits are likely to create slope instability due to burrowing. Rockmat 6D is supplied unseeded.



Product Characteristics

Fibre	Coir
Fibre Content	100%
Fibre Characteristics	Untreated Natural
Weight / Total g/m ² (+/- 10%)	800
Weight / Fibre g/m ² (+/- 10%)	450
Blanket Thickness	8-10mm
Functional Longevity	24-36 Months
Functional Longevity Wire Mesh	Approx. 12-15 years
Bottom Netting Type / Size / Weight	PP (Polypropylene) / 6 x 6mm / 4.8g/m ²
Inner Netting Type / Size / Weight	PP (Polypropylene) / 12 x 13mm / 7.1 g/m ²
Top Netting Type	Galvanised Steel Mesh
Stitching Thread	PP-thread (brown) UV Degradable
Stitching Thread Tensile Strength	6.5cN/dtex
Slope Recommendation	Up to 70°
Tensile Strength EN ISO 10319	89.5kg-force per 25cm
Wire Thickness DIN 1200	0.8mm
Wire Mesh Size	25 x 25mm / Hexagon
Weight	350g/m ²
Galvanised Coating	+/- 0.075mm
Break Resistance	350-500 N/mm ²
Width	1.2m
Length	25m
Area Per Roll	30m ²
Diameter Per Roll	0.36m
Volume Per Roll	0.16m ³