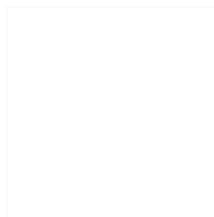


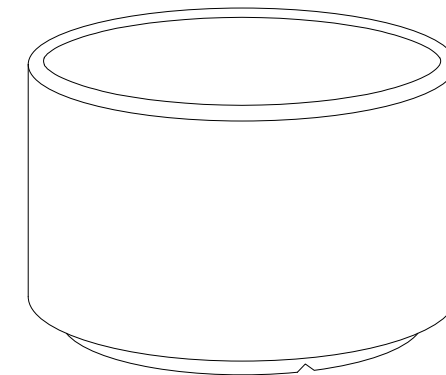
CARACTERÍSTICAS / FEATURES



Material hormigón Petra 1
Acabado decapado e hidrofugado
Dimensiones Ø 90, h. 65 cm
Color ver carta de colores
Fijación apoyado por su propio peso
Peso 239 Kg / 271 L
Palet 100 x 100 cm

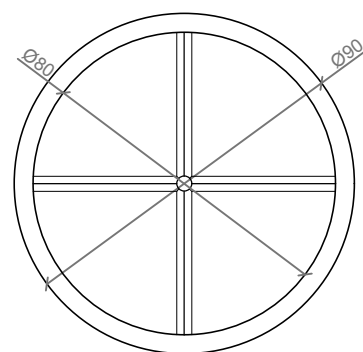
Material precast concrete Petra 1
Finish scaled and waterproofed
Dimensions Ø 90, h. 65 cm
Colour see colour catalogue
Fixing resting on the ground
Weight 239 Kg / 271 L
Pallet 100 x 100 cm

diseñador / design: magourban

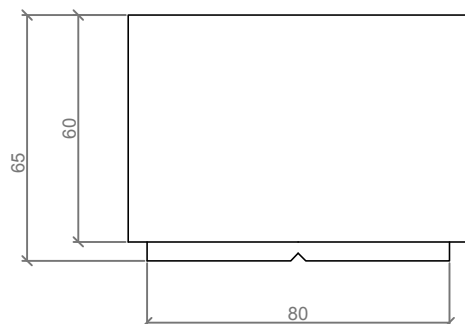


CIRCULAR MEDIUM

GEOMETRIA / GEOMETRY



VISTA INFERIOR / BOTTOM VIEW



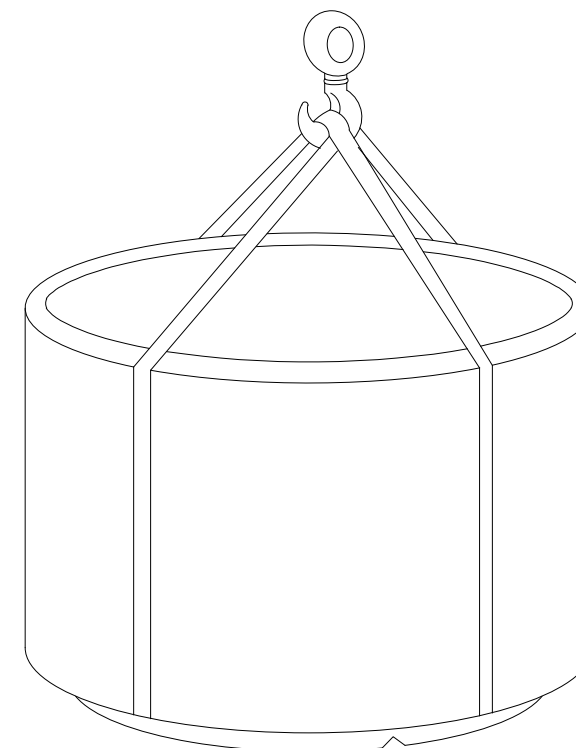
ALZADO / FRONT VIEW

ESC. 1:20

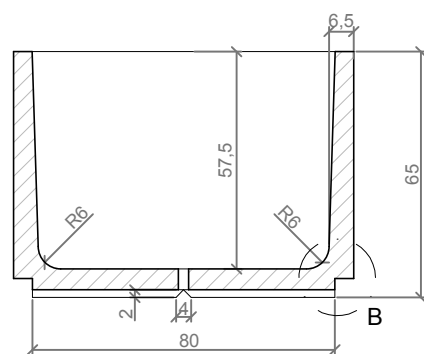
MANIPULACIÓN E INSTALACIÓN / HANDLING AND INSTALLATION

- 1 Fijar eslingas e instalar / Fixing slings and install.

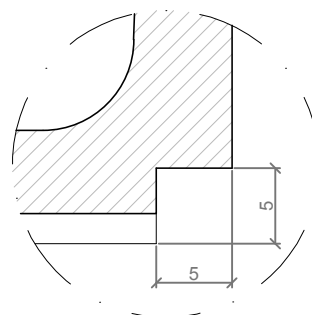
Elevación / Hoisting
 P= 239 Kg



ESPECIFICACIONES / SPECIFICATIONS



SECCIÓN A-A' / SECTION A-A'



DETALLE B / DETAIL B

ESC. 1:20