

Temple Block Tree

Description

Inspired by the Muyu or slit drum from eastern Asia. With its resonant, durable reinforced polymer blocks in a natural stone color and polished stainless steel leg, this instrument produces a unique, hollow tone that will add a fun and dynamic sound to your compositions.

When struck with the included mallets, each block produces a satisfying 'pop' sound. Players can strike the blocks' top surface or rims to produce a hollow yet bright, penetrating sound. As an idiophone, the sound is produced by the vibration of the instrument itself, with each block's internal space functioning as a resonating chamber.

The Temple Block Tree features a 'branch' configuration of two sets of five blocks graduating in size, with the largest block producing the lowest sound and the smallest block having the highest sound.

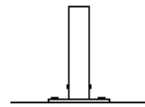
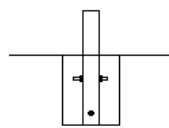
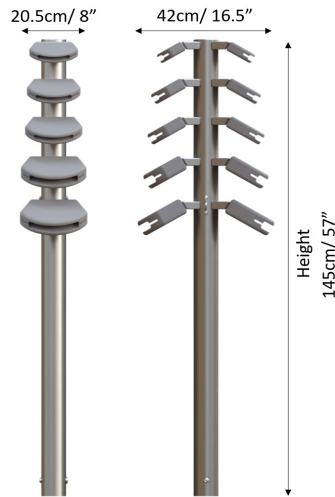


Tuning and Sound Level Data

Unpitched Percussion

Materials and Features

- 316 mirror polished marine grade stainless steel stand.
- Durable reinforced polymer blocks.
- Vandal resistant fixings.



Packed Dimensions	Weight (kg)	L (cm)	H (cm)	W (cm)
Box 1	14	194	10	15
Box 2	5	19	28	28

*Surface fixing instruments will include additional packages containing fixing plates.

Find more information [here](#).

Warranty: Limited Twenty-Five (25), Limited Ten (10) Year & Limited Two (2) Year warranty
TEMP/Issue 001