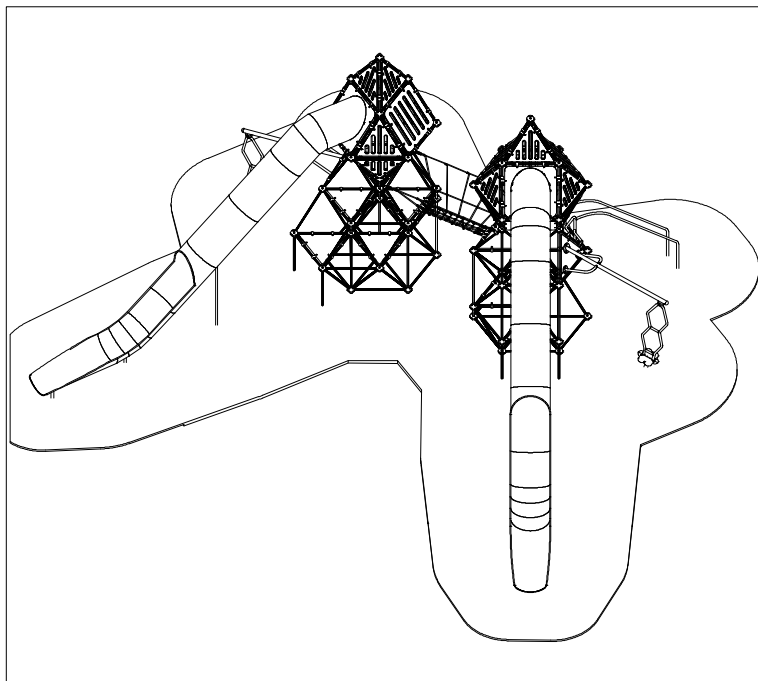


Installation Instructions



Matrix	
K7	
PROD. CODE	6030-087
SIZE	9.9 x 11.83 x 5.72
AGE RANGE	10 Years to Adult
F/ FALL HEIGHT	2000mm
HEAVIEST PART	Approx 320 Kg
TOTAL WEIGHT	Approx 2075 Kg

General Installation Instructions

In accordance with 6.1.3 EN1176-1:2008 we recommend that slides do not face south or near due south due to heat build up.

- 1 Read instructions thoroughly before commencing installation of unit
- 2 Excavate foundations as shown in the plan
- 3 **WHEN ASSEMBLING UNIT ENSURE CLAMPS ARE FITTED ON THE CORRECT STRUT IN THE CORRECT ORIENTATION**
- 4 Assemble main tower unit on bricks in excavated holes, ensuring it is plumb, square, at the correct height and orientation. Fit plastic panels, net decks and accessory mounting panels, ensuring correct location and orientation
- 5 Position slide on bricks in holes and attach to panel
- 6 Position bannister rails on bricks in hole, fit together using spacer bar and fit to clamps and floor panel
- 9 Attach the T-bar to the below ground frame and attach and support the spinner support to the mounting plate as shown
- 10 Position the spinner on a brick in its foundation. Attach the spindle to the T-bar and the bearing housing to the spinner support as shown. Check the spinner is aligned and spins freely
- 11 Assemble climbing net to its clamps and below ground fixings. Position the below ground fixings on bricks in their foundation holes, ensuring the net is taut
- 12 Back fill all holes with a total 1.5m³ concrete (4 parts gravel/2 parts sand/1 part cement)
- 13 Allow concrete to set for 48 hours before first use

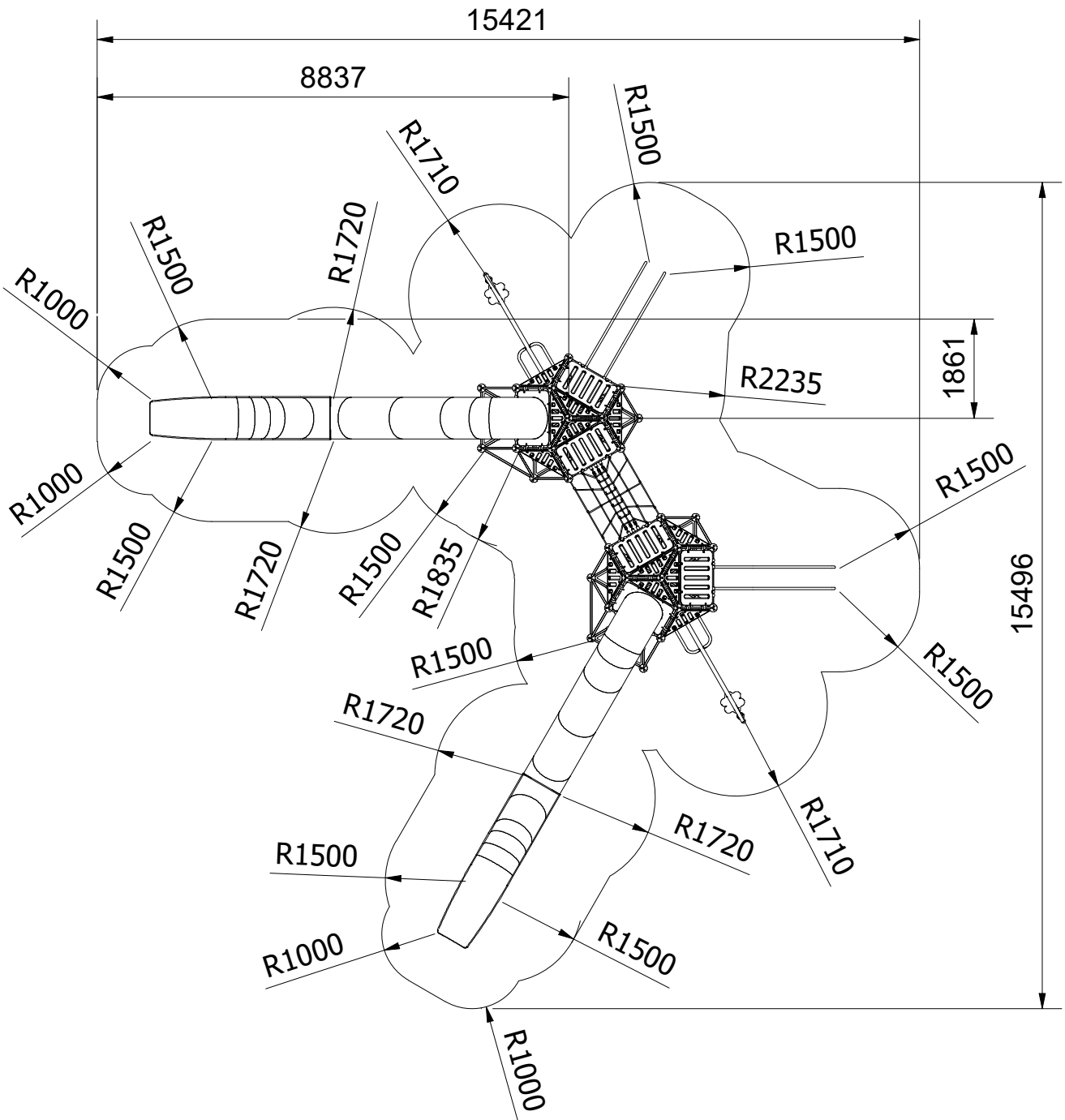
General Assembly Notes

- Make sure the Nord lock washers are used on the fixings inside the spheres
Do not separate the washers
- When assembling sections leave the fixings inside the spheres loose as this allows the strut extrusions movement which makes locating the opposite end easier
- Before fixing the spheres together ensure all fixings inside are tight - NOTE torque for M10 x 35 socket cap head screws is 50Nm
- Some clamps have round holes, others have flats - see following sheet for identification
- Ensure grub screws are used to secure clamps on the struts and apply loctite to screw
- Ensure plastic caps are fitted in unused holes in the spheres

Note:- 1. Ensure all installation aids are removed before first use.

2. Lifting Equipment or sufficient manpower should be used throughout installation.

Minimum Space



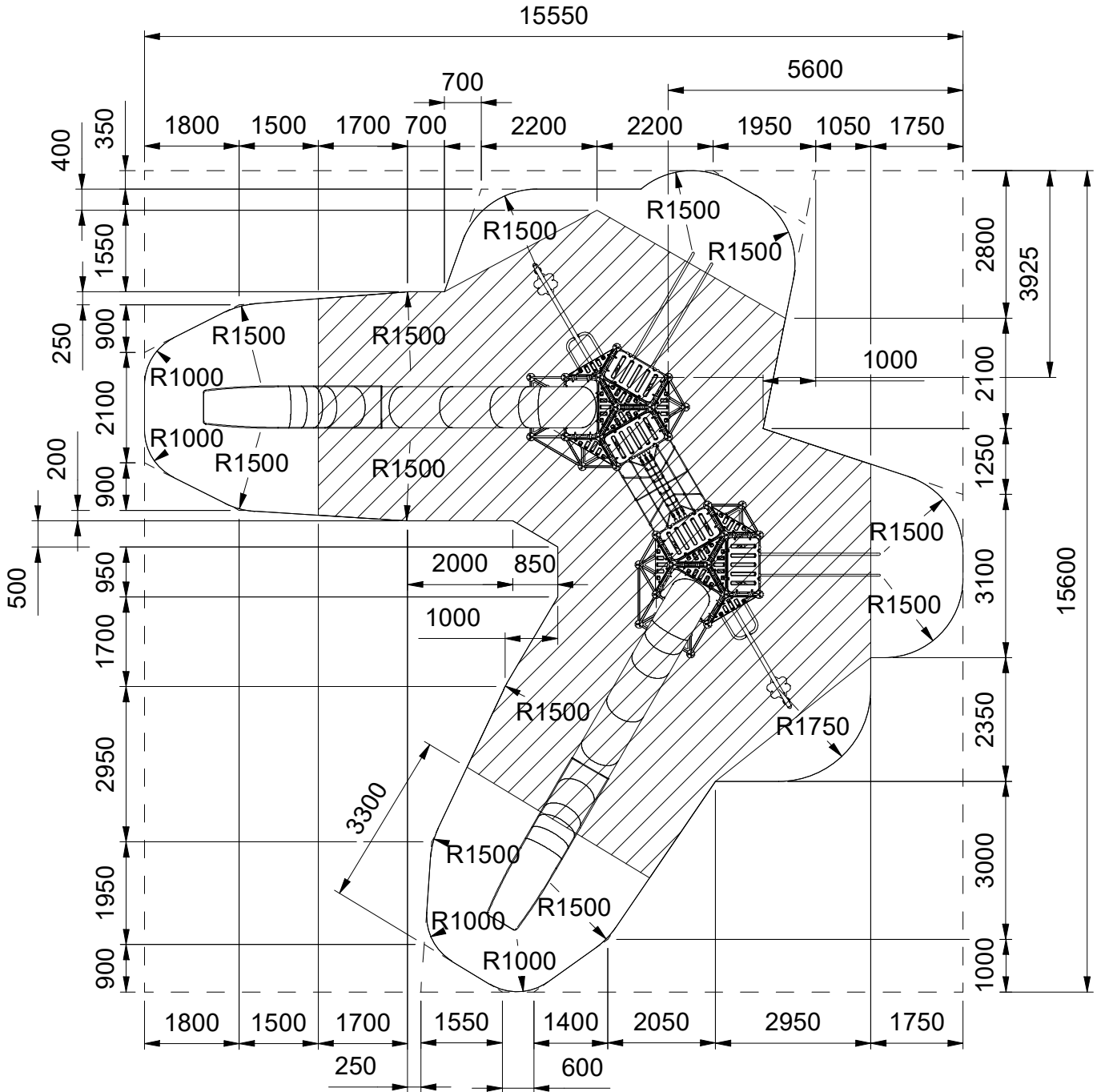
Safety Surfacing

116.5 square m of wetpour surfacing

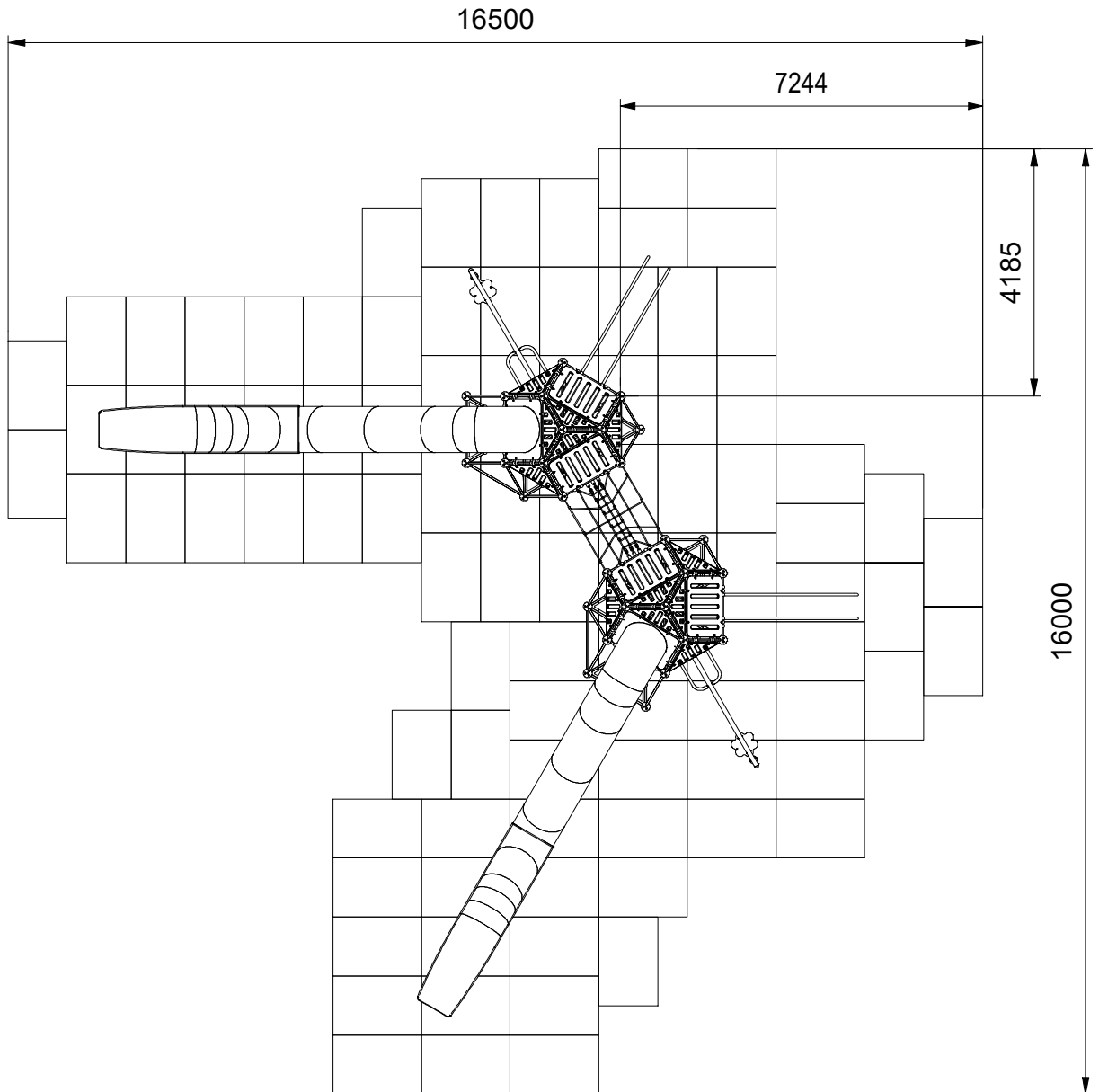
78.0 square m of wetpour for 2000 FFH

38.5 square m of wetpour for 1100 FFH

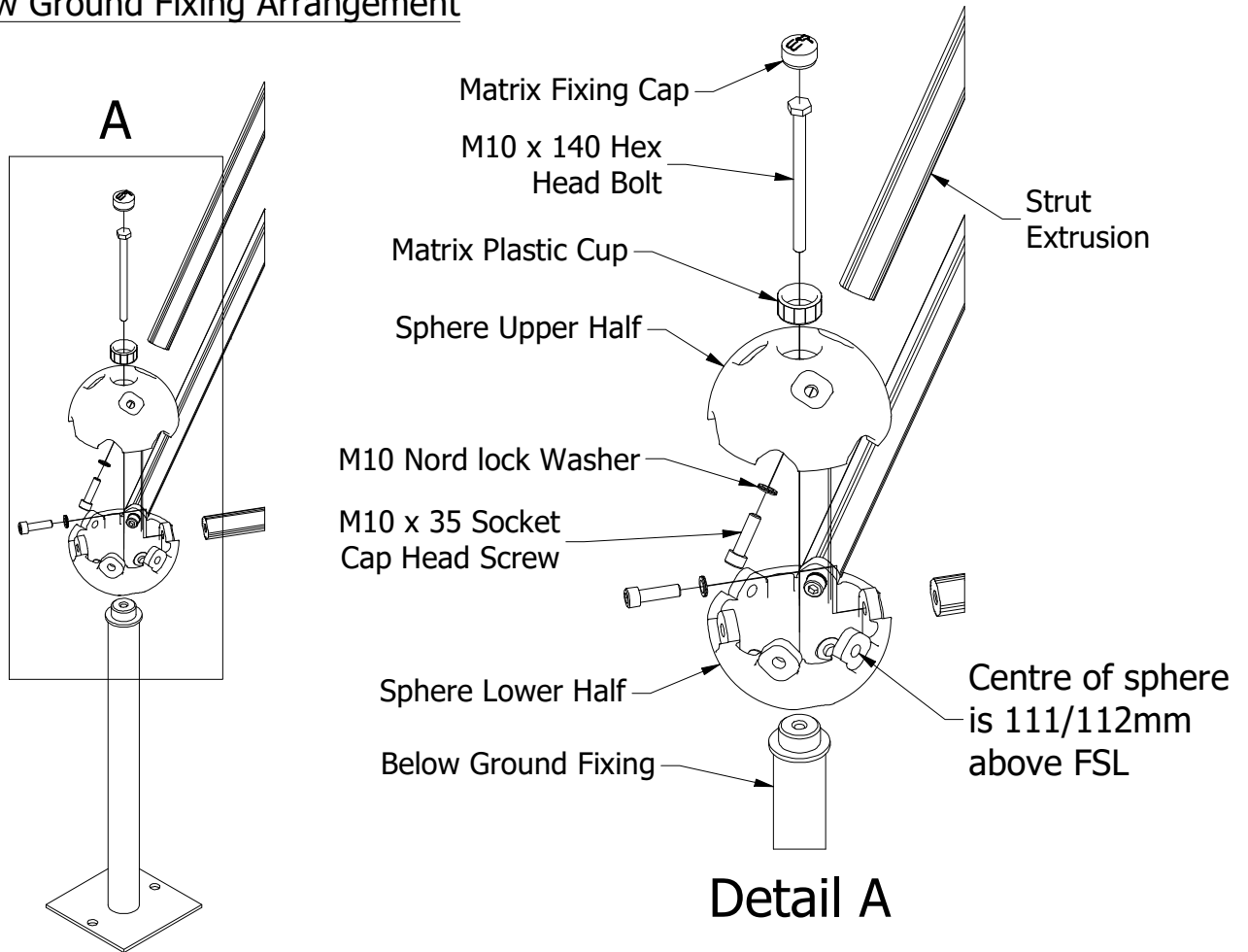
56.0 linear m of wetpour edging



Safety Surfacing
95 No. Grass Mats (1m x 1.5m)



Below Ground Fixing Arrangement



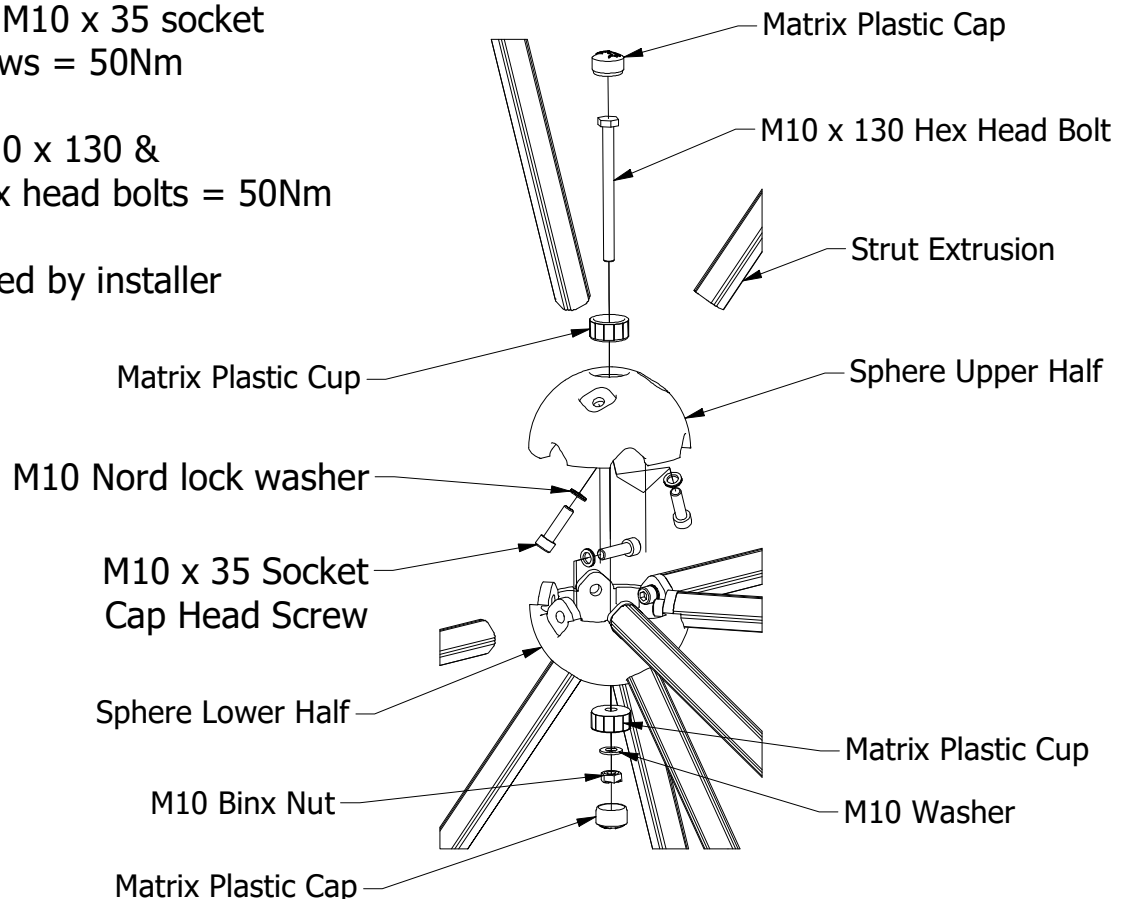
Typical Joint Detail

NOTE

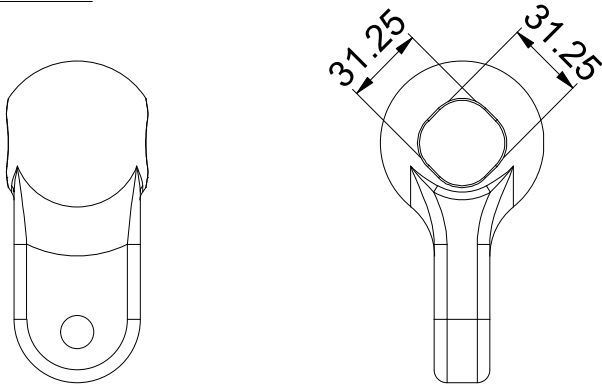
Torque for all M10 x 35 socket cap head screws = 50Nm

Torque for M10 x 130 & M10 x 140 hex head bolts = 50Nm

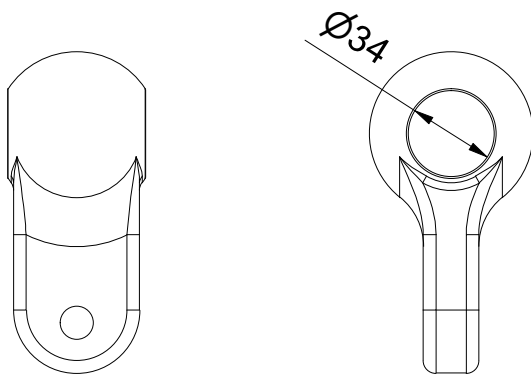
Tooling supplied by installer



Clamp Details



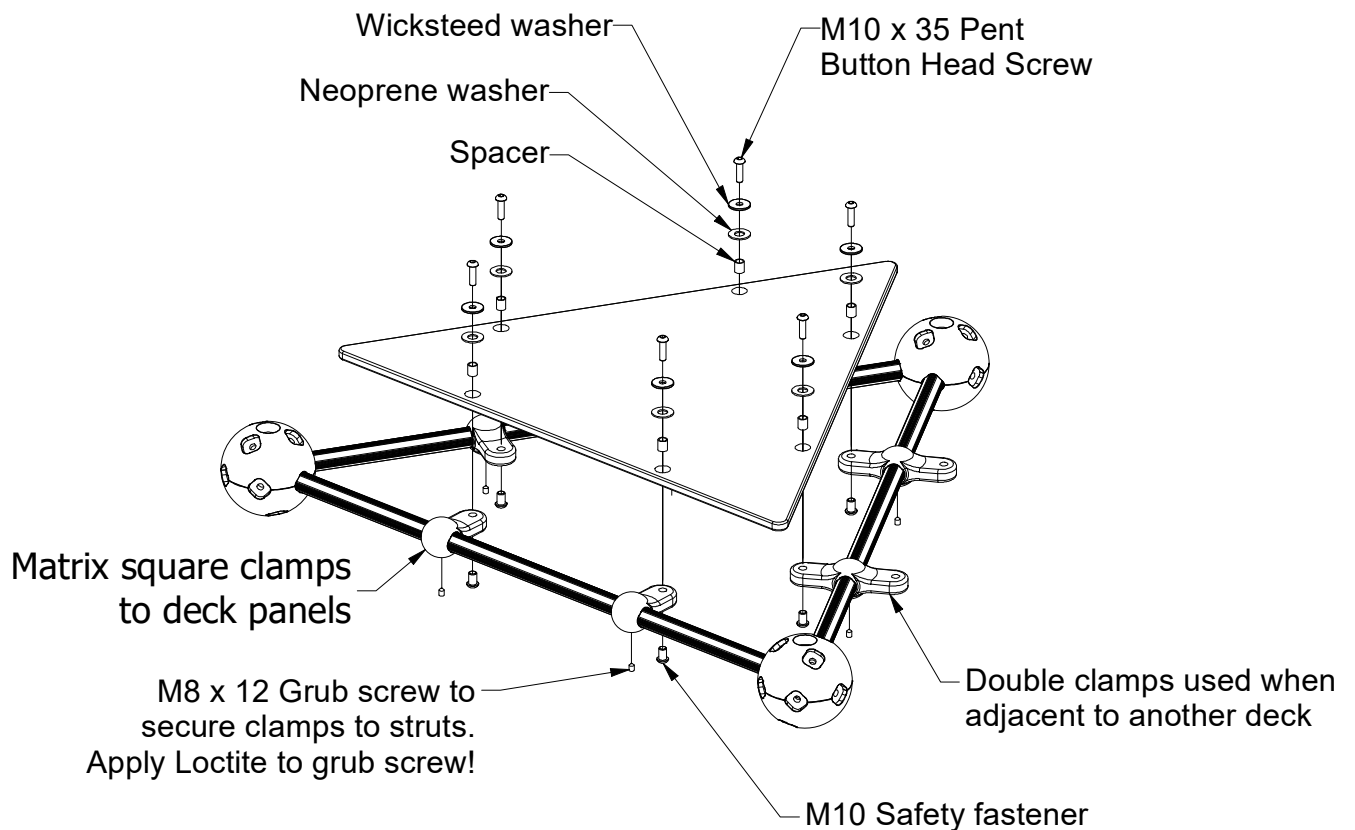
Matrix square clamp 3711-046
(3711-049 if drilled for pin)
Used for deck, sides of nets
and bannisters.



Matrix circular clamp 3711-048
(3711-050 if drilled for pin)
Used for panels that fit on
the side of the Matrix unit
and across top and bottom
of nets.

Typical deck assembly

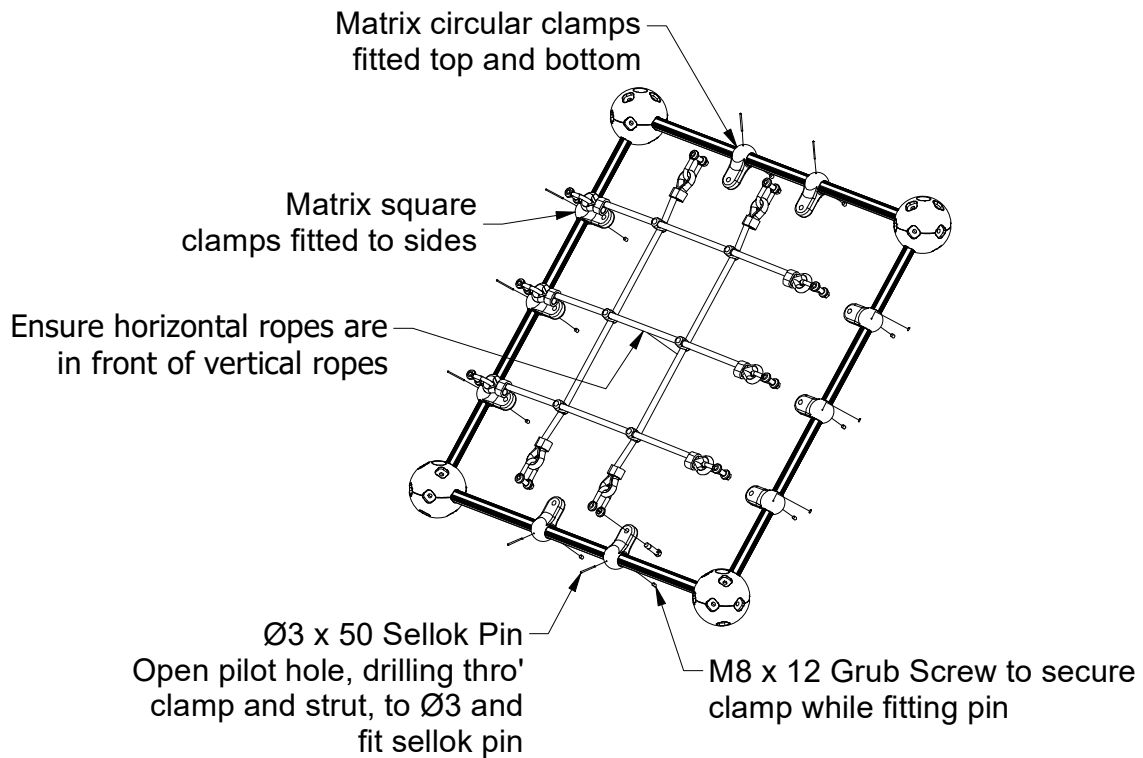
Note - Clamps are fitted **during** structure assembly



Typical climbing net assembly detail

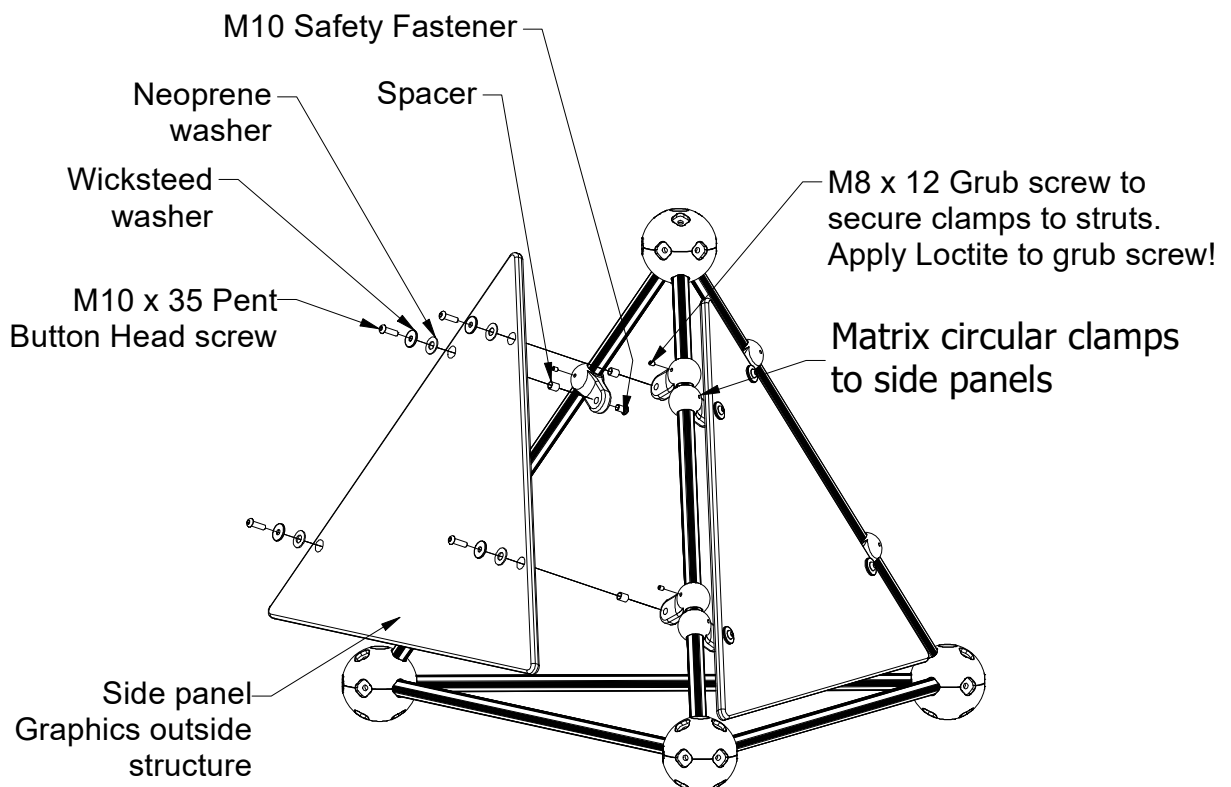
Note - Clamps are fitted **during** structure assembly

Note clamp orientation



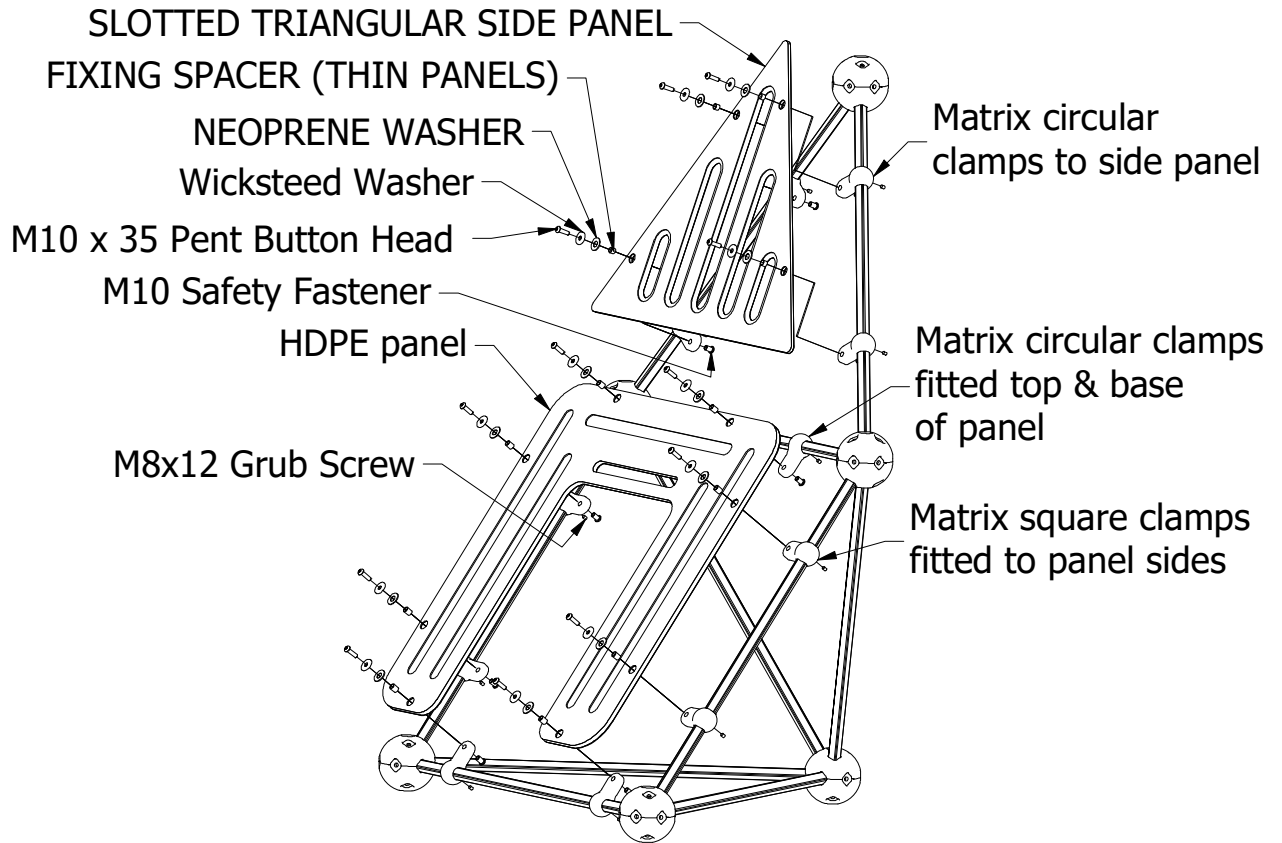
Typical Side Panel Assembly Detail

Note - Clamps are fitted **during** structure assembly

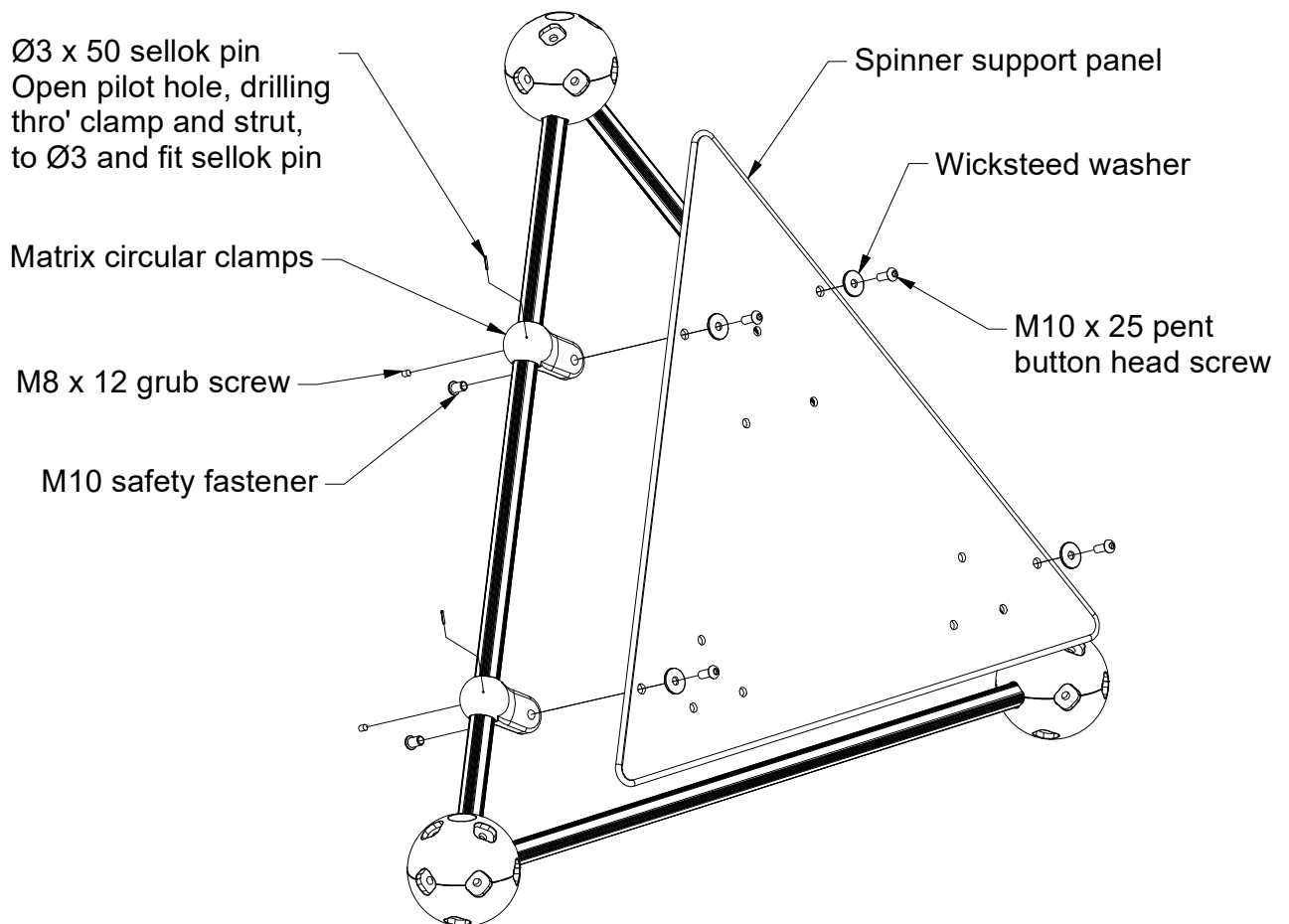


Typical plastic panel fitting detail

Note - Clamps are fitted **during** structure assembly

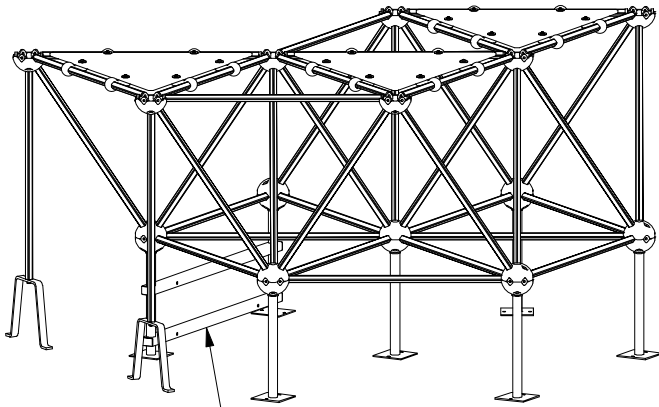


Fitting of spinner support panel

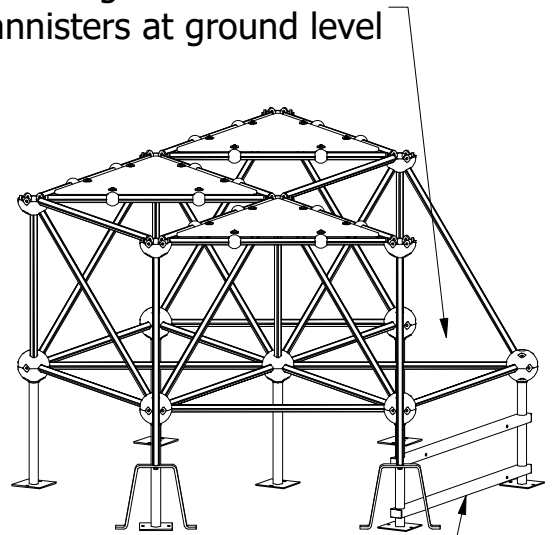


First layer of Matrix structure

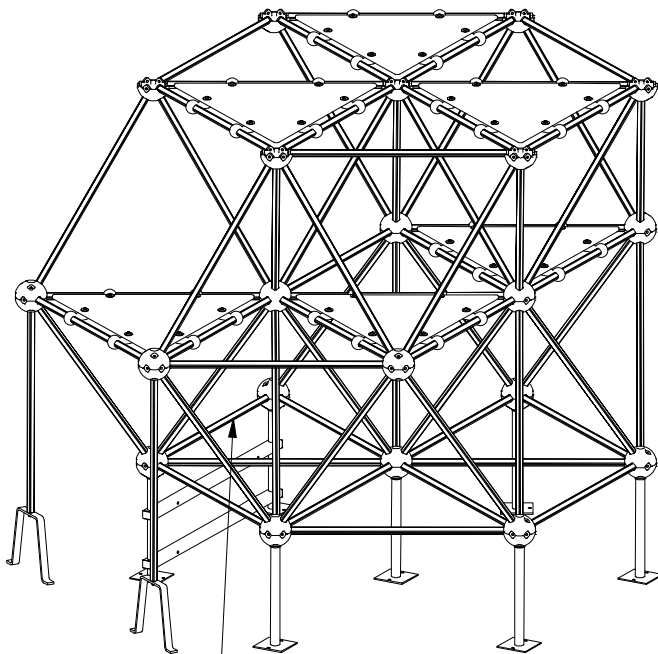
Note - no rung extrusion below bannisters at ground level



Frame for spinner



Frame for spinner



This side is to the spinner

Matrix fixing cup and cap with M10 x 140 hex head bolt

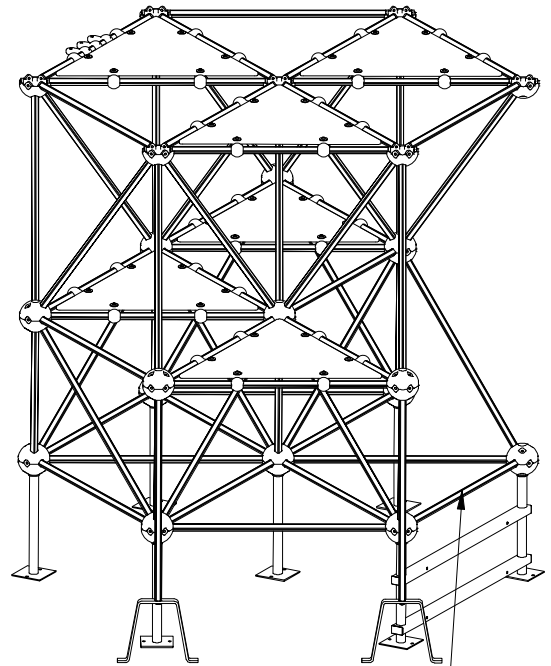
Rung extrusion

M10 x 35 hex head screw with M10 Nord lock washer

Below ground support

Extended deck support

Second layer of Matrix structure

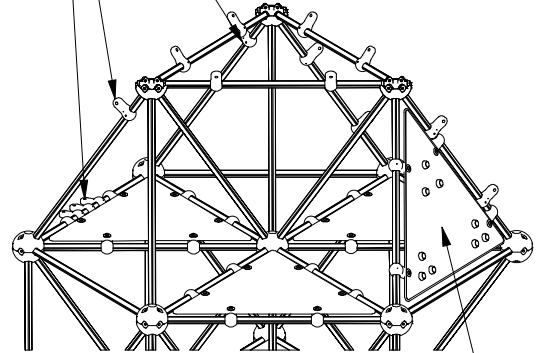
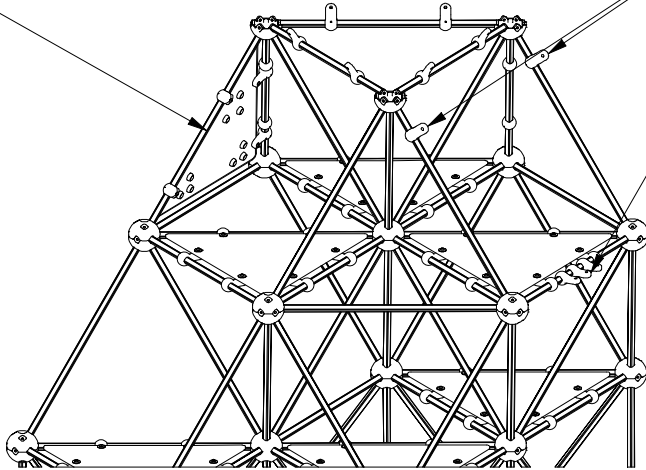


This side is to the spinner

Third layer of Matrix structure

Mounting panel
for Spinner

Matrix square clamps
for Rope Bridge

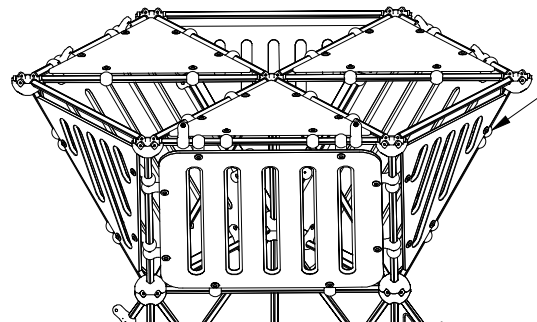
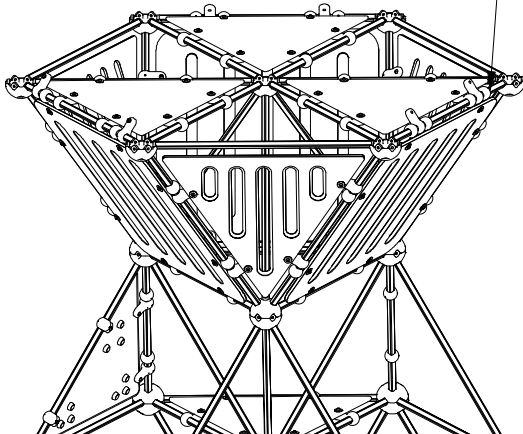


Mounting panel
for Spinner

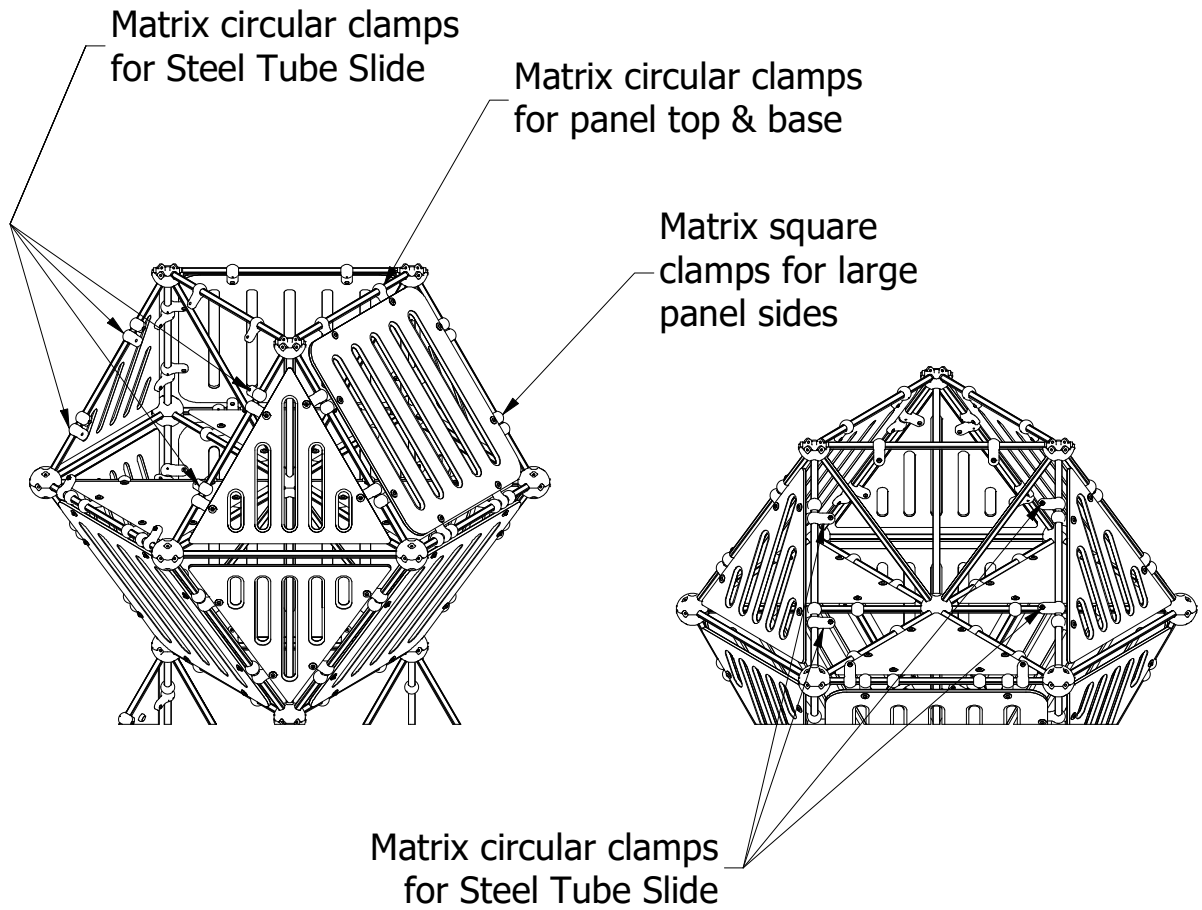
Fourth layer of Matrix structure

Matrix circular clamps
for panel top & base

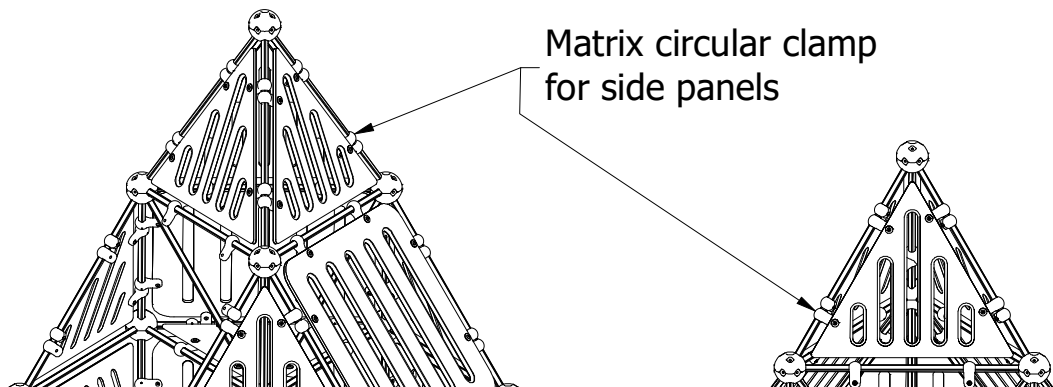
Matrix square
clamps for large
panel sides



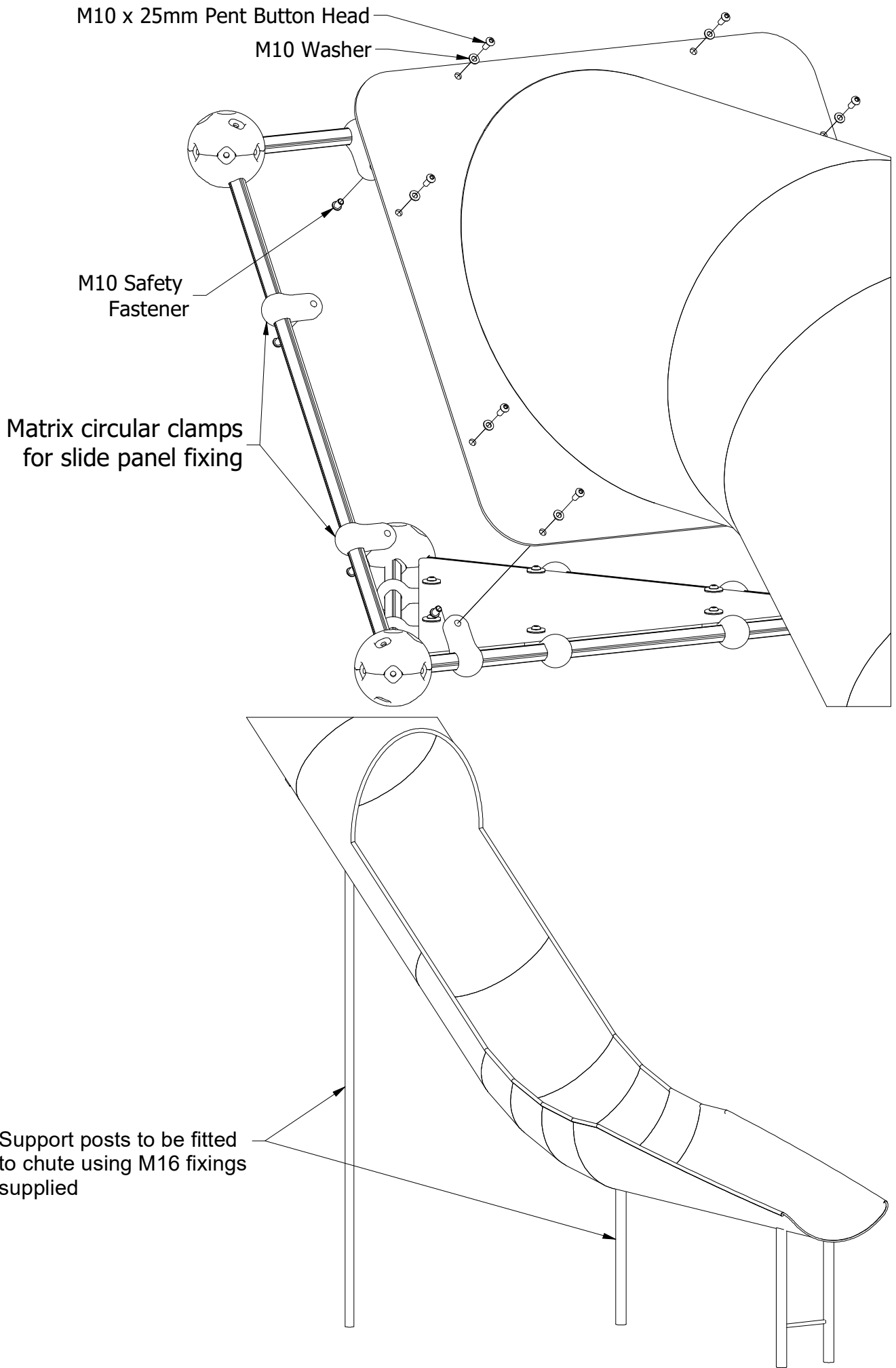
Fifth layer of Matrix structure



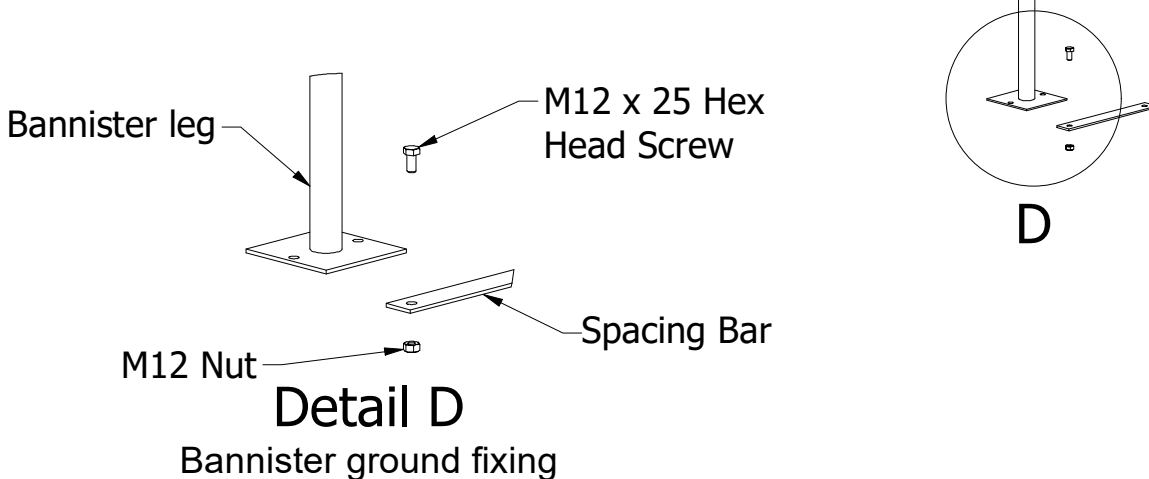
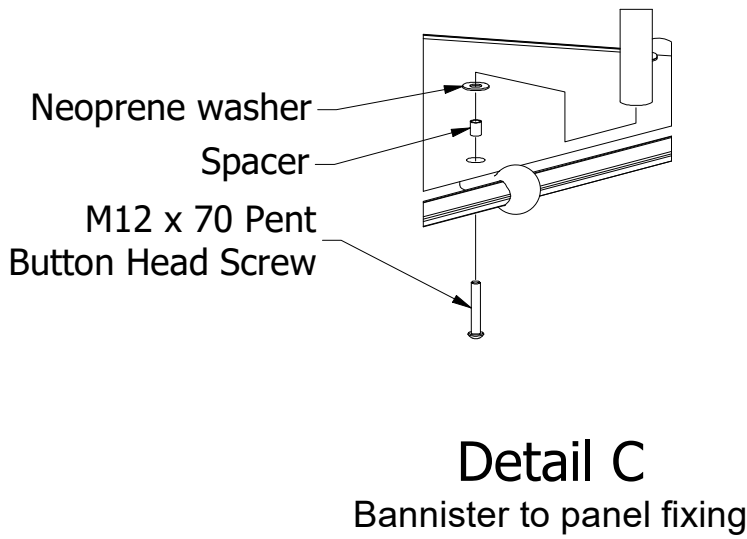
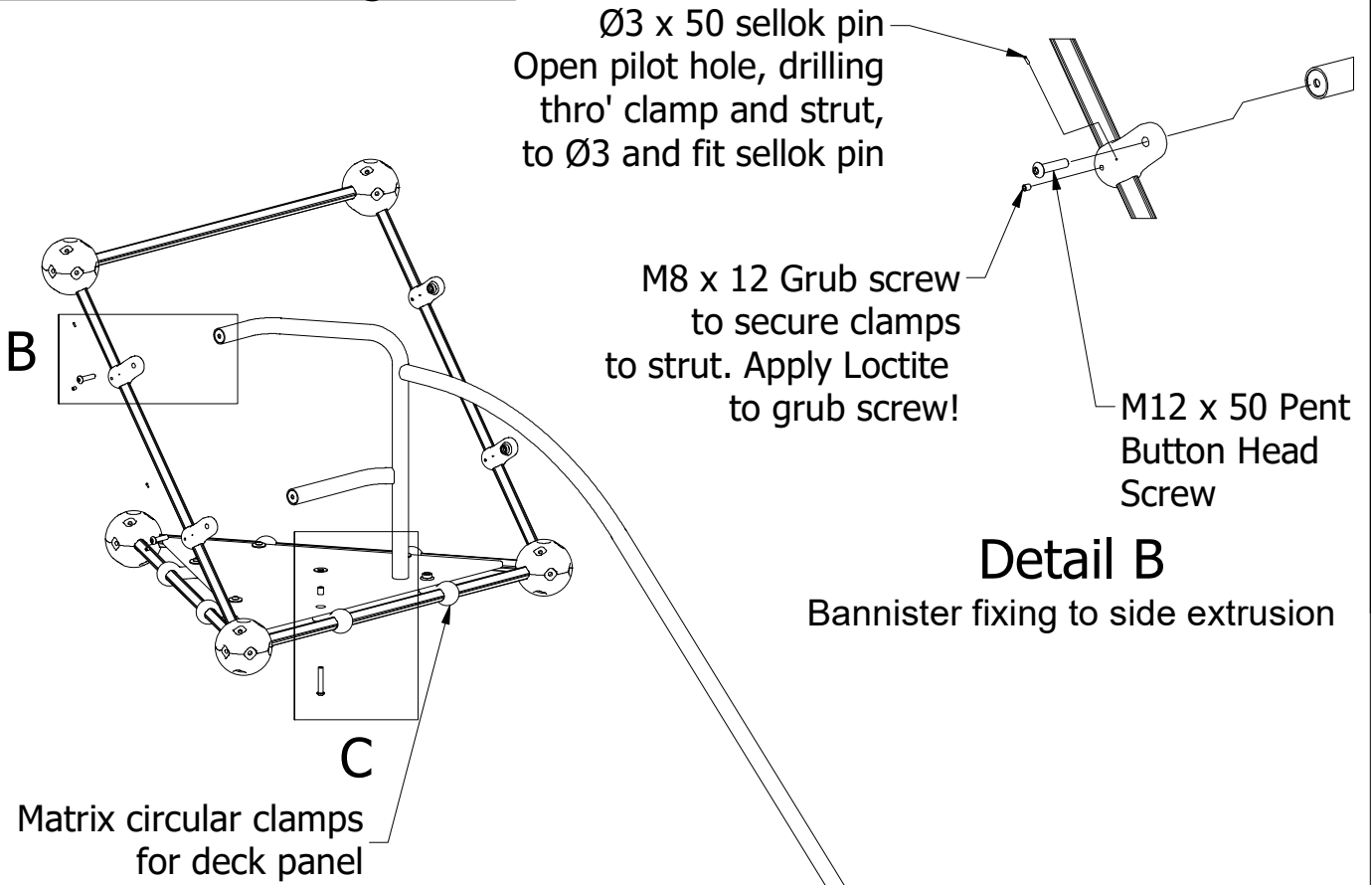
Sixth layer of Matrix structure



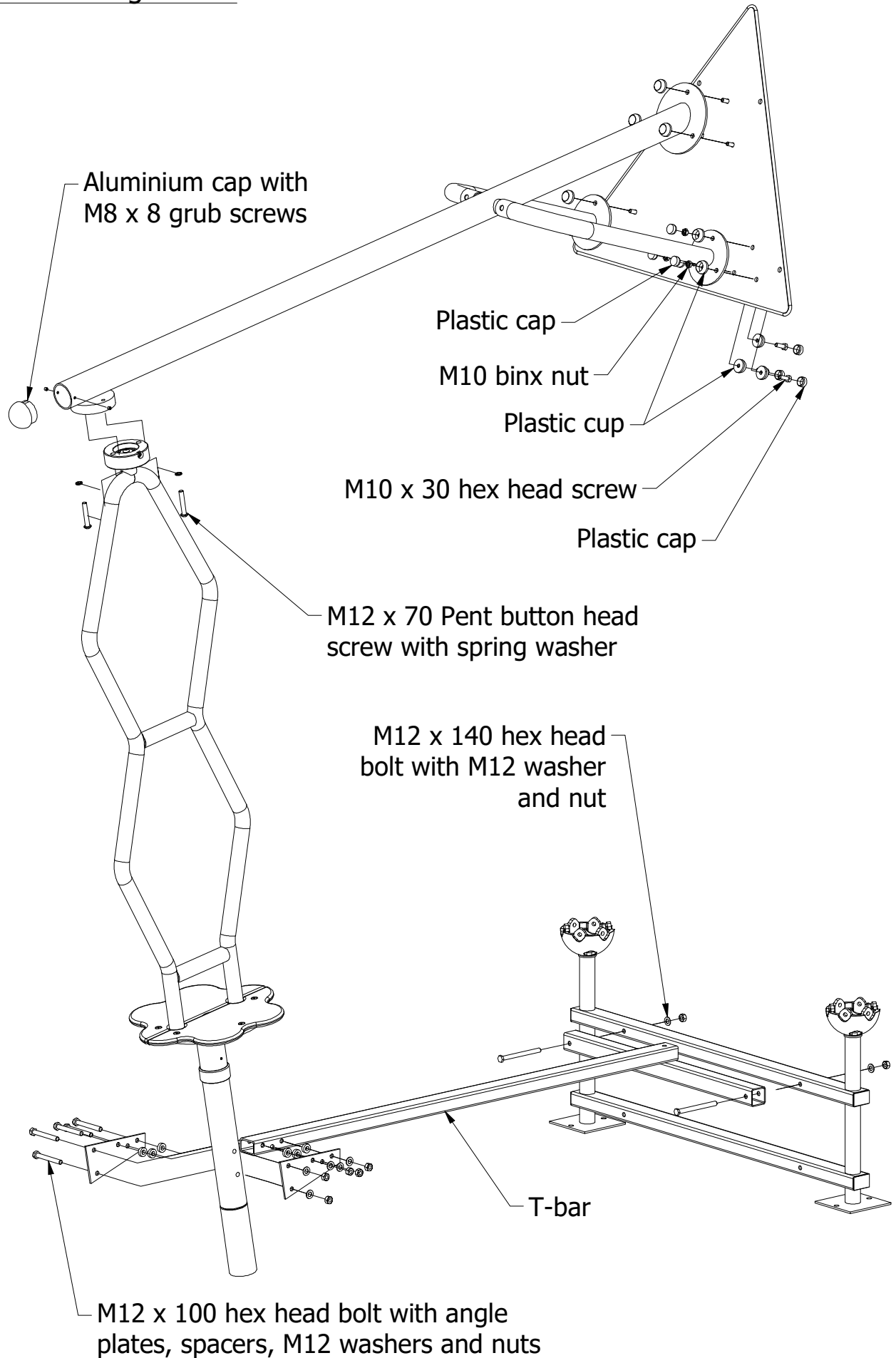
Slide fitting details



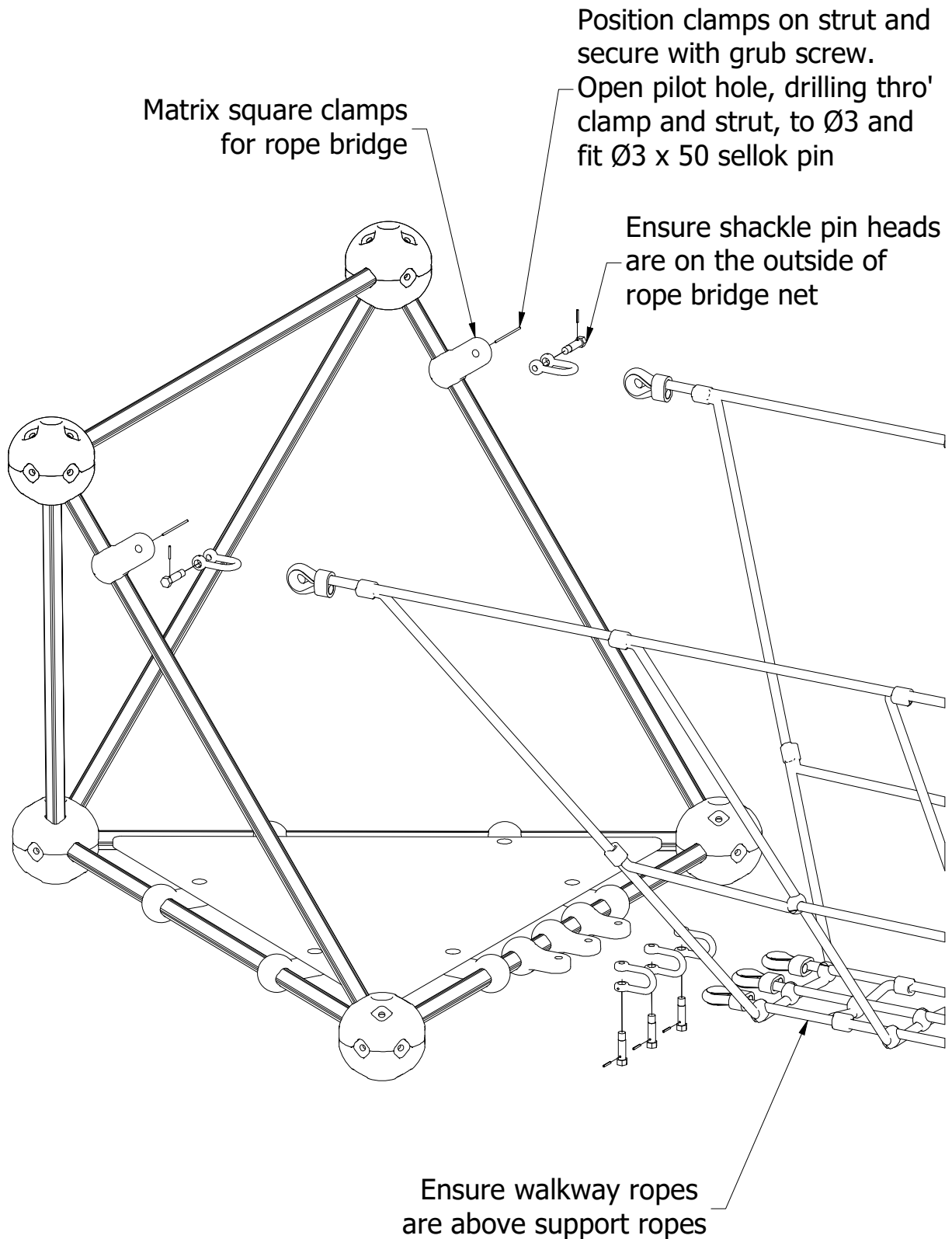
Bannister Slide fitting details



Spinner fitting details



Rope Bridge fitting details



PARTS LIST

ITEM	QTY	PART NUMBER	DESCRIPTION
1	2	5094-070	Spinner Assy
2	2	4202-357	SPINNER SUPPORT ASSY
3	2	4202-356	SPINNER MTG PLATE ASSY
4	2	4202-353	MATRIX SPINNER FRAME
5	2	4202-352	Matrix T-Bar W.A.
6	2	4201-337	RH BANNISTER
7	2	4201-336	LH BANNISTER
8	10	4201-092	MATRIX BGF
9	1	4141-227	ROPE BRIDGE ASSY
10	2		TUBE SLIDE (Supplied by M&H)
11	6	3756-231	SLOTTED SQUARE PANEL
12	4	3756-221	SLOTTED SQUARE PANEL
13	18	3756-104	FLOOR PANEL
14	18	3756-102	SLOTTED TRIANGULAR SIDE PANEL
15	134	3730-128	Matrix Fixing Cap
16	464	3730-119	Matrix Fixing Sq. Cap
17	134	3730-118	Matrix Fixing Cup
18	228	3730-100	RUNG EXTRUSION
19	8	3711-050	ROUND BALL CLAMP (PINNED)
20	18	3711-049	SINGLE BALL CLAMP (PINNED)
21	128	3711-048	ROUND BALL CLAMP
22	148	3711-046	SINGLE BALL CLAMP
23	76	3711-043	LOWER HEMISPHERE
24	76	3711-033	UPPER HEMISPHERE
25	2	3711-002	Aluminium End Cap
26	4	3201-220	Angle Plate
27	2	3069-008	SPACING BAR
28	4	3066-016	Below Ground Support
29	12	3030-430	Spacer
30	2		Low Support Leg (M&H)
31	2		High Support Leg (M&H)
32	260	2900-041	NEOPRENE WASHER
33	16		M16 Nut Cap (M&H)
34	36	2611-032_Cup	Blue Poepelmann Cup
35	36	2611-032_Cap	Blue Poepelmann Cap
36	108	2472-009	FIXING SPACER (15 panel)
37	152	2472-003	FIXING SPACER
38	26	2223-022	SELLOK PIN Dia 3 x 50 LG
39	268	2215-519	Wicksted Washer
40	16		M16 Plain Washer (M&H)

PARTS LIST

ITEM	QTY	PART NUMBER	DESCRIPTION
41	14	2215-509	M12 Plain Washer
42	74	2215-508	M10 Washer
43	452	2212-212	M10 NORD LOCK WASHER
44	4	2212-204	M12 Spring Washer
45	18	2193-007	M12 Nut
46	8		M16 nyloc nut (M&H)
47	76	2191-010	M10 Binx Nut
48	4	2185-086	M12 x 140 HT Hex Head Bolt
49	10	2185-081	M12 x 100 HEX HD BOLT
50	18	2185-049	M10 x 140 HEX HEAD BOLT
51	58	2185-048	M10 x 130 Hex Head Bolt
52	284	2177-002	M10 Safety Fastener
53	8	2176-181	M12 x 70 Pent Button Head
54	8	2176-179	M12 x 50 Pent Button Head
55	260	2176-127	M10 x 35 Pent Button Head
56	24	2176-126	M10 x 25 Pent Button Head
57	8		M16 x 40 Hex Head Screw (M&H)
58	4	2175-134	M12 x 25 LG HEX HD SCREW
59	4	2175-117	M10 x 35 LG HEX HD SCREW
60	18	2175-116	M10 x 30 LG HEX HD SCREW
61	300	2171-115	M8x12 Grub Screw
62	4	2171-111	M8 x 8 LG CUP POINT GRUB SCREW
63	448	2171-093	M10 x 35 SKT CAP HEAD SCREW