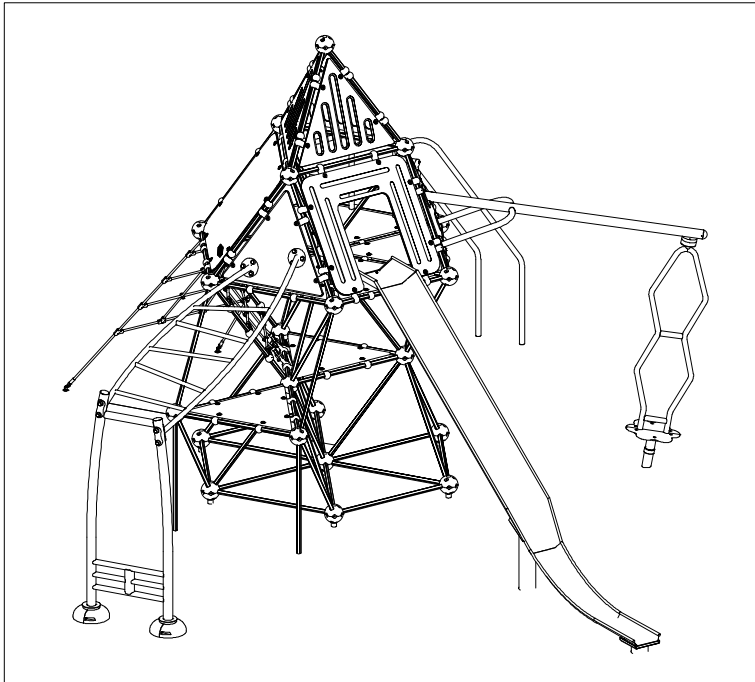


# Installation Instructions



## Matrix

### K5

PROD. CODE	6030-075
SIZE	7.12 x 5.43 x 3.88
AGE RANGE	10 Years to Adult
F/ FALL HEIGHT	2590mm
HEAVIEST PART	Approx 57 Kg
TOTAL WEIGHT	Approx 695 Kg



### General Installation Instructions

In accordance with 6.1.3 EN1176-1:2008 we recommend that slides do not face south or near due south due to heat build up.

- 1 Read instructions thoroughly before commencing installation of unit
- 2 Excavate foundations as shown in the plan
- 3 WHEN ASSEMBLING UNIT ENSURE CLAMPS ARE FITTED ON THE CORRECT STRUT IN THE CORRECT ORIENTATION
- 4 Assemble main tower unit on bricks in excavated holes, ensuring it is plumb, square, at the correct height and orientation. Fit plastic panels, net decks and accessory mounting panels, ensuring correct location and orientation
- 5 Position slide on bricks in holes and attach to panel
- 6 Position bannister rails on bricks in hole, fit together using spacer bar and fit to clamps and floor panel
- 7 Position end frame in foundation hole and support
- 8 Loosely attach ladder assembly to the end frame and mounting panel. Check end frame is vertical and square before tightening fixings
- 9 Attach the T-bar to the below ground frame and attach and support the spinner support to the mounting plate as shown
- 10 Position the spinner on a brick in its foundation. Attach the spindle to the T-bar and the bearing housing to the spinner support as shown. Check

the spinner is aligned and spins freely

- 11 Assemble climbing net to its clamps and below ground fixings. Position the below ground fixings on bricks in their foundation holes, ensuring the net is taut
- 12 Back fill all holes with a total 1.5m<sup>3</sup> concrete (4 parts gravel/2 parts sand/1 part cement)
- 13 Allow concrete to set for 48 hours before first use

### General Assembly Notes

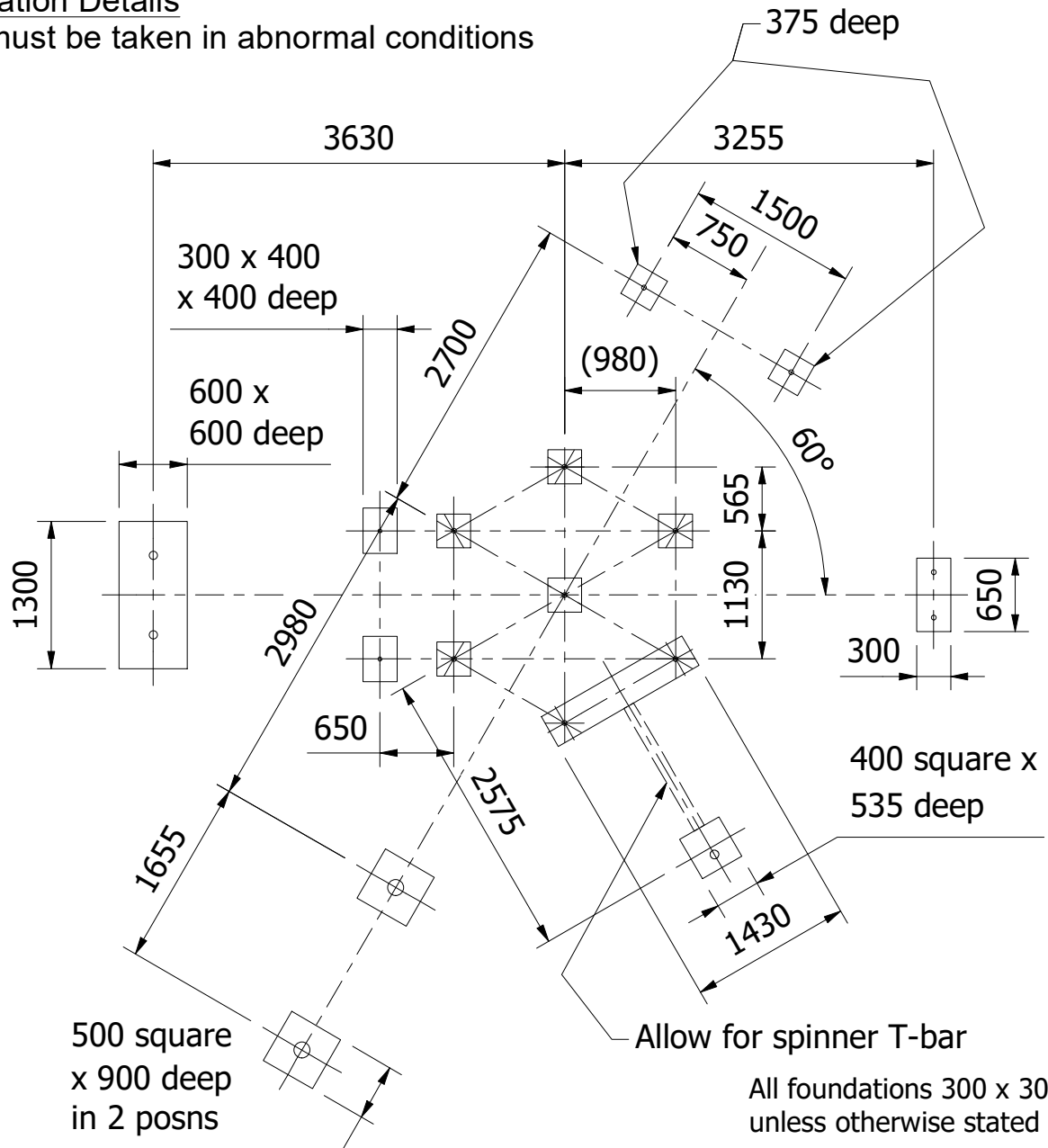
- Make sure the Nord lock washers are used on the fixings inside the spheres
- When assembling sections leave the fixings inside the spheres loose as this allows the strut extrusions movement which makes locating the opposite end easier
- Before fixing the spheres together ensure all fixings inside are tight
- Some clamps have round holes, others have flats - see following sheet for identification
- Ensure grub screws are used to secure clamps on the struts and apply loctite to screw
- Ensure plastic caps are fitted in unused holes in the spheres

Note:- 1. Ensure all installation aids are removed before first use.

2. Lifting Equipment or sufficient manpower should be used throughout installation.

**Foundation Details**

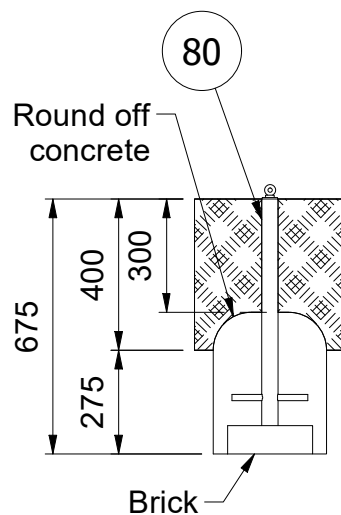
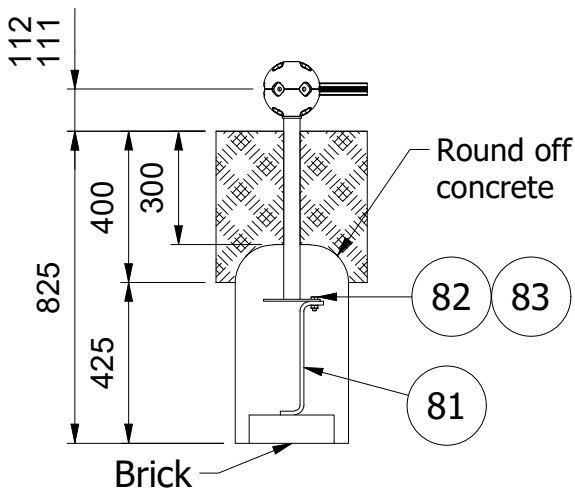
Care must be taken in abnormal conditions



All foundations 300 x 300 unless otherwise stated

All foundations 525 deep unless otherwise stated

**For Bark Fix**

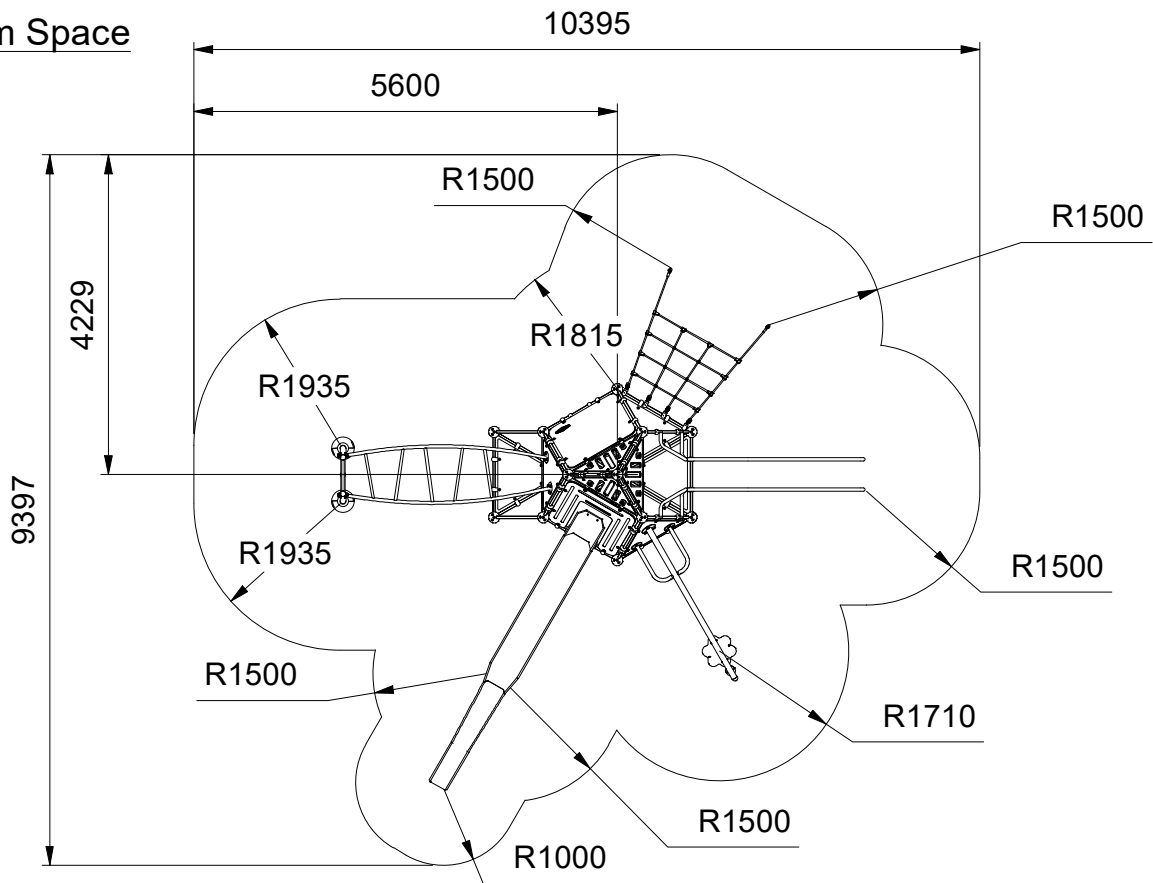


**For climbing net**

Z-shaped below ground fixings are to be fitted to:  
bannister (2 off)  
swingalong support frame (8 off)

Top of foundations for the spinner and swingalong are to be 300 below finished surface with corners rounded off as above

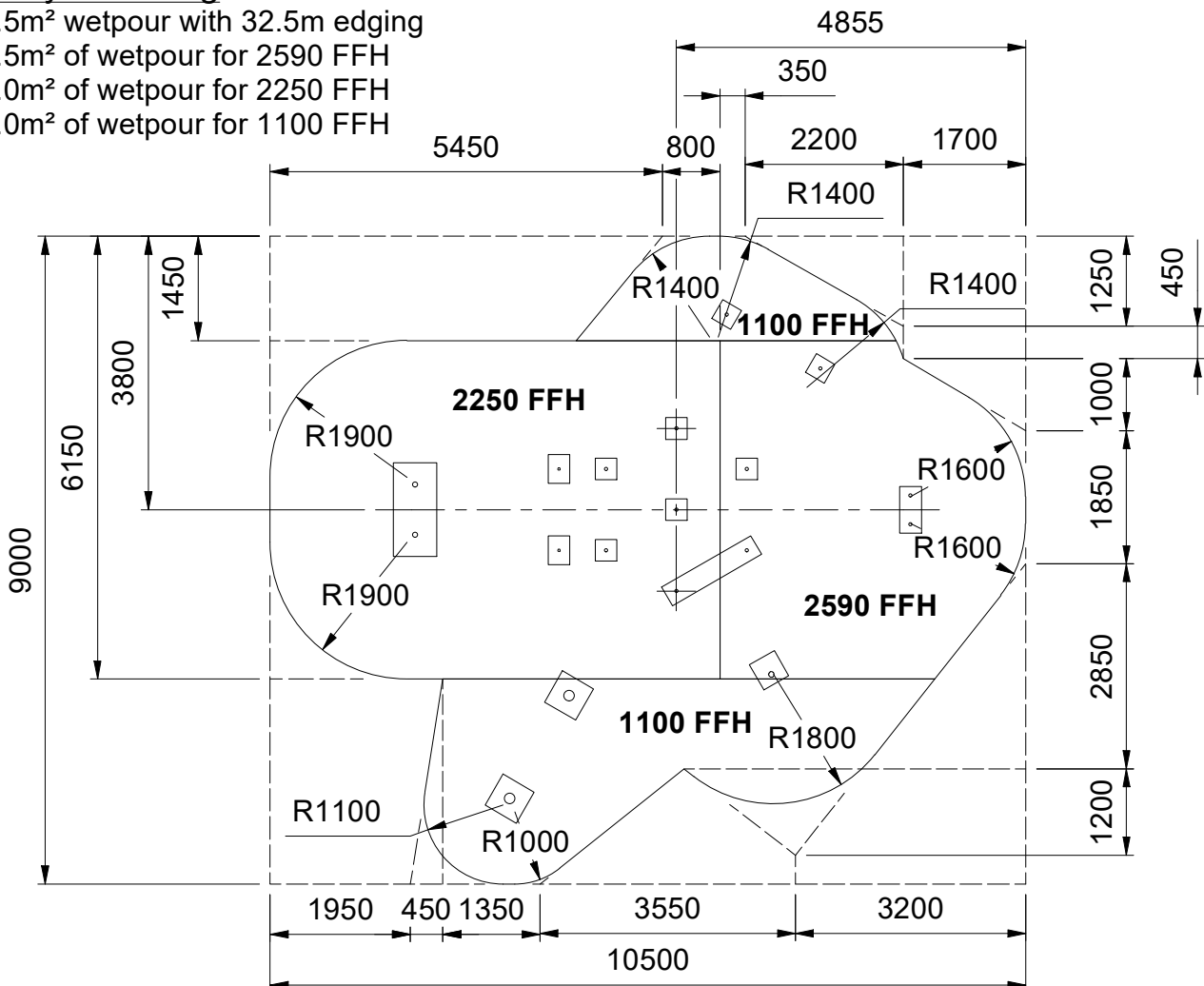
**Minimum Space**



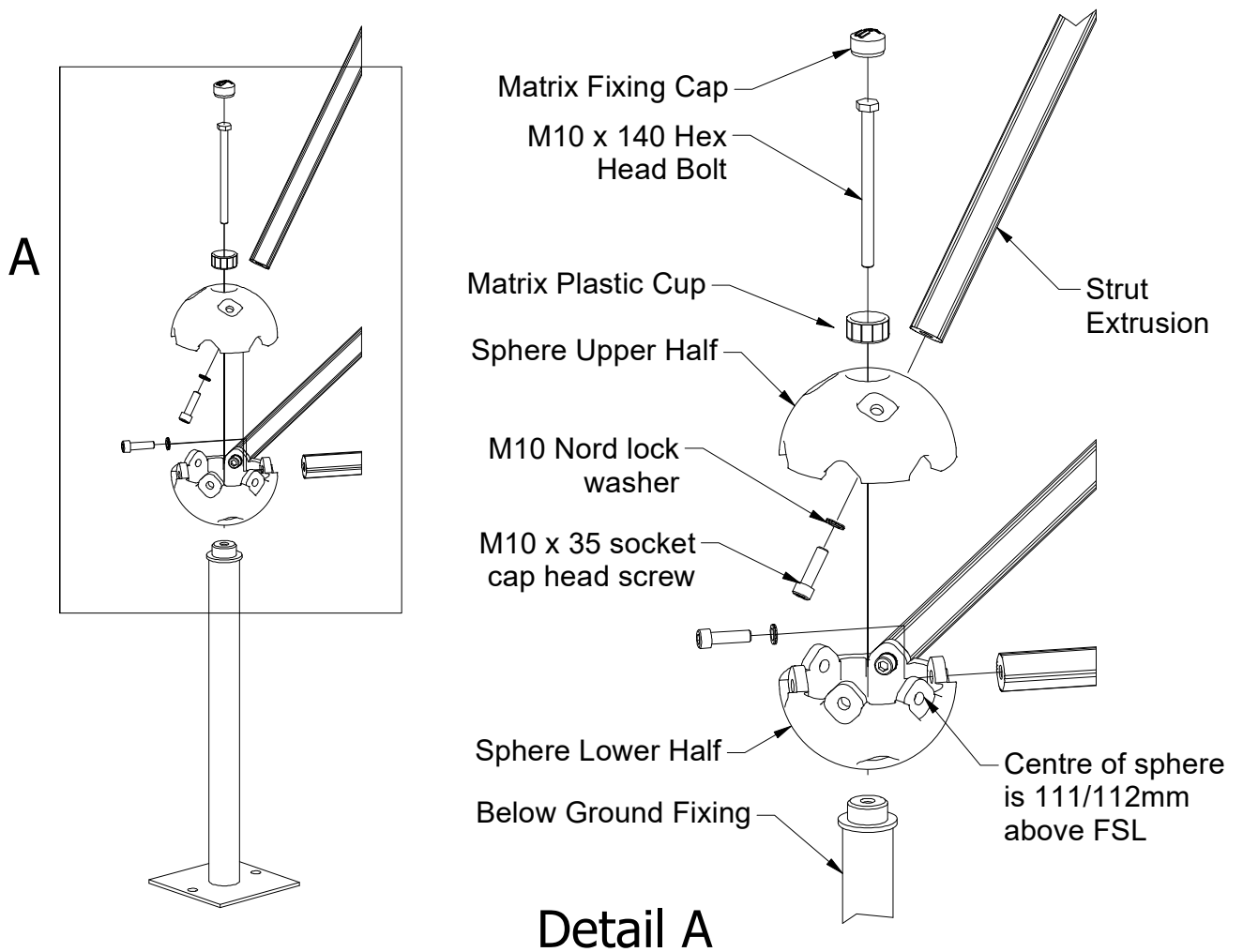
**Safety surfacing is based on Wicksteed products; other suppliers systems may differ and as such adherence to the required critical fall height is required.**

**Safety Surfacing**

- 62.5m<sup>2</sup> wetpour with 32.5m edging
- 17.5m<sup>2</sup> of wetpour for 2590 FFH
- 28.0m<sup>2</sup> of wetpour for 2250 FFH
- 17.0m<sup>2</sup> of wetpour for 1100 FFH



## Below Ground Fixing Arrangement



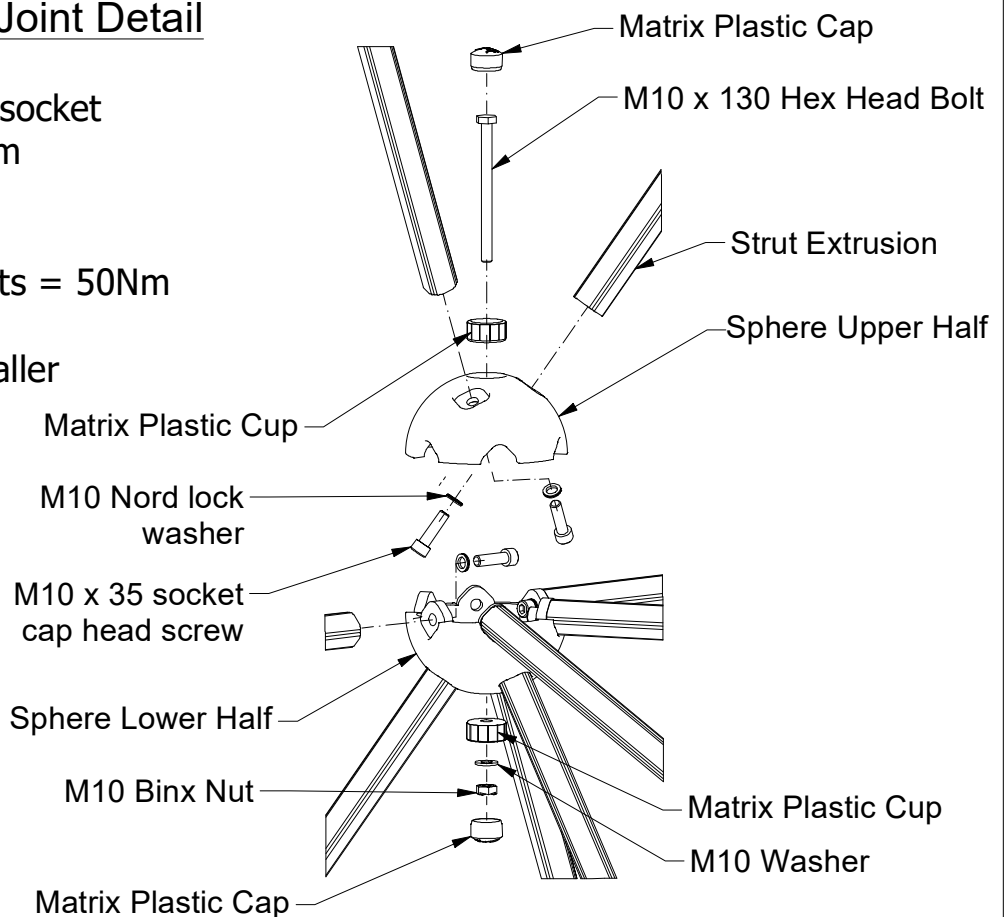
## Typical Joint Detail

### NOTE

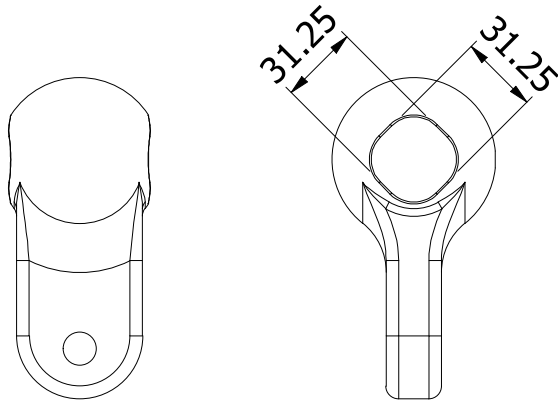
Torque for all M10 x 35 socket cap head screws = 50Nm

Torque for M10 x 130 & M10 x 140 hex head bolts = 50Nm

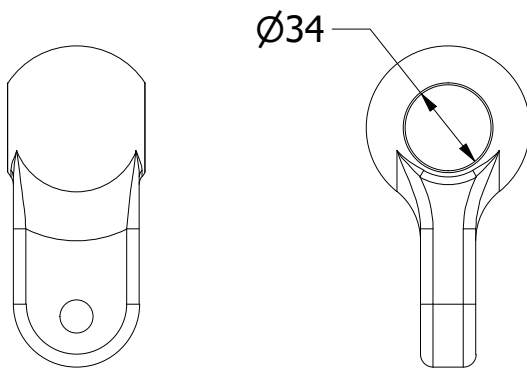
Tooling supplied by installer



## Clamp Details



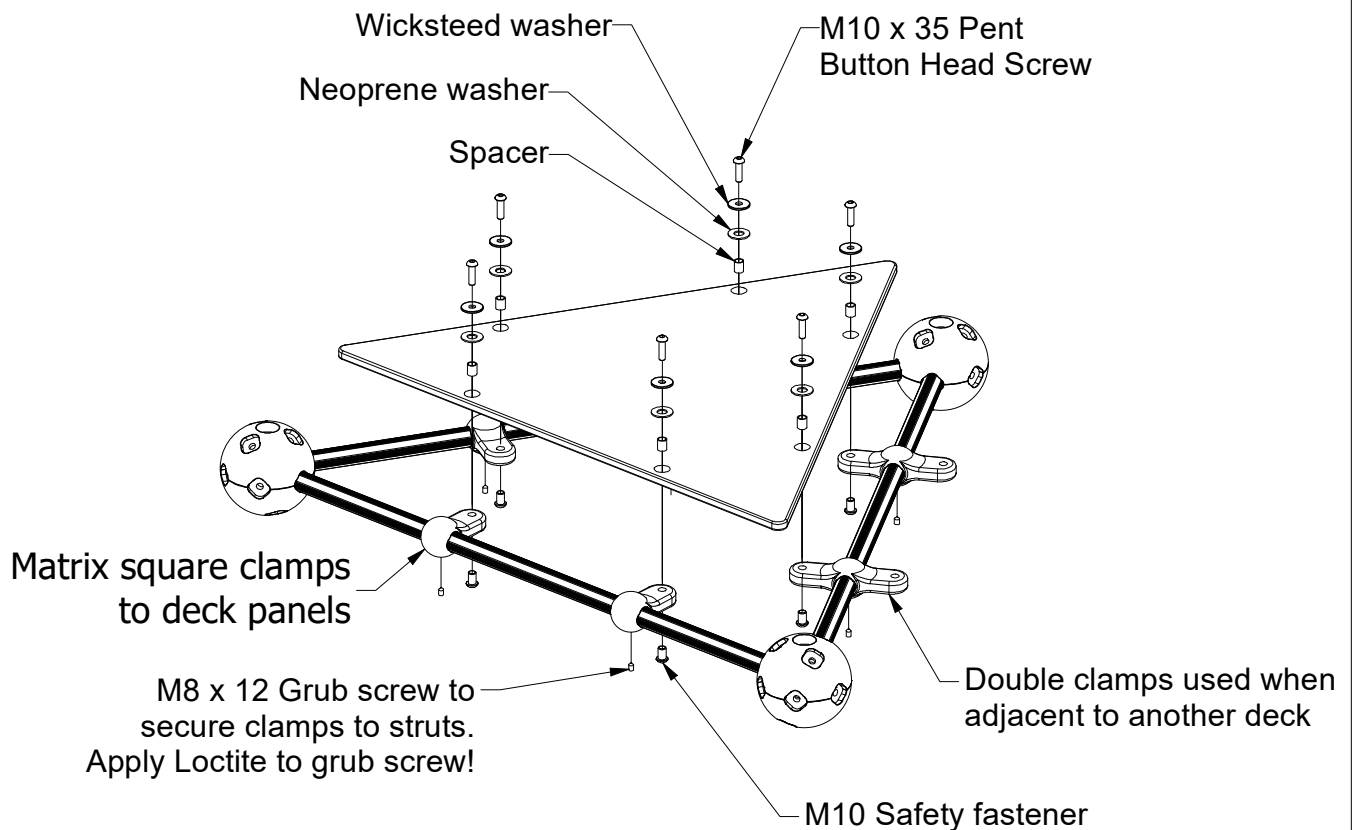
Matrix square clamp 3711-046  
(3711-049 if drilled for pin)  
Used for deck, sides of nets  
and bannisters



Matrix circular clamp 3711-048  
(3711-050 if drilled for pin)  
Used for panels that fit on  
the side of the Matrix unit  
and across top and bottom  
of nets

## Typical deck assembly

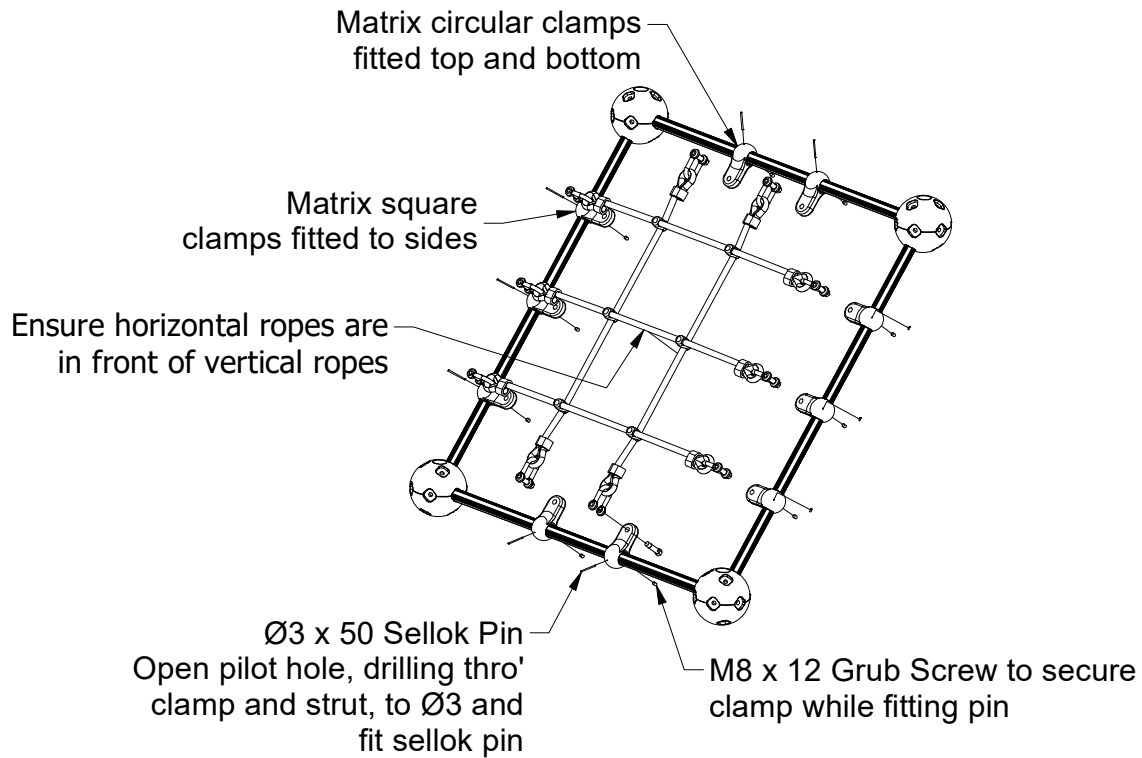
Note - Clamps are fitted **during** structure assembly



## Typical climbing net assembly detail

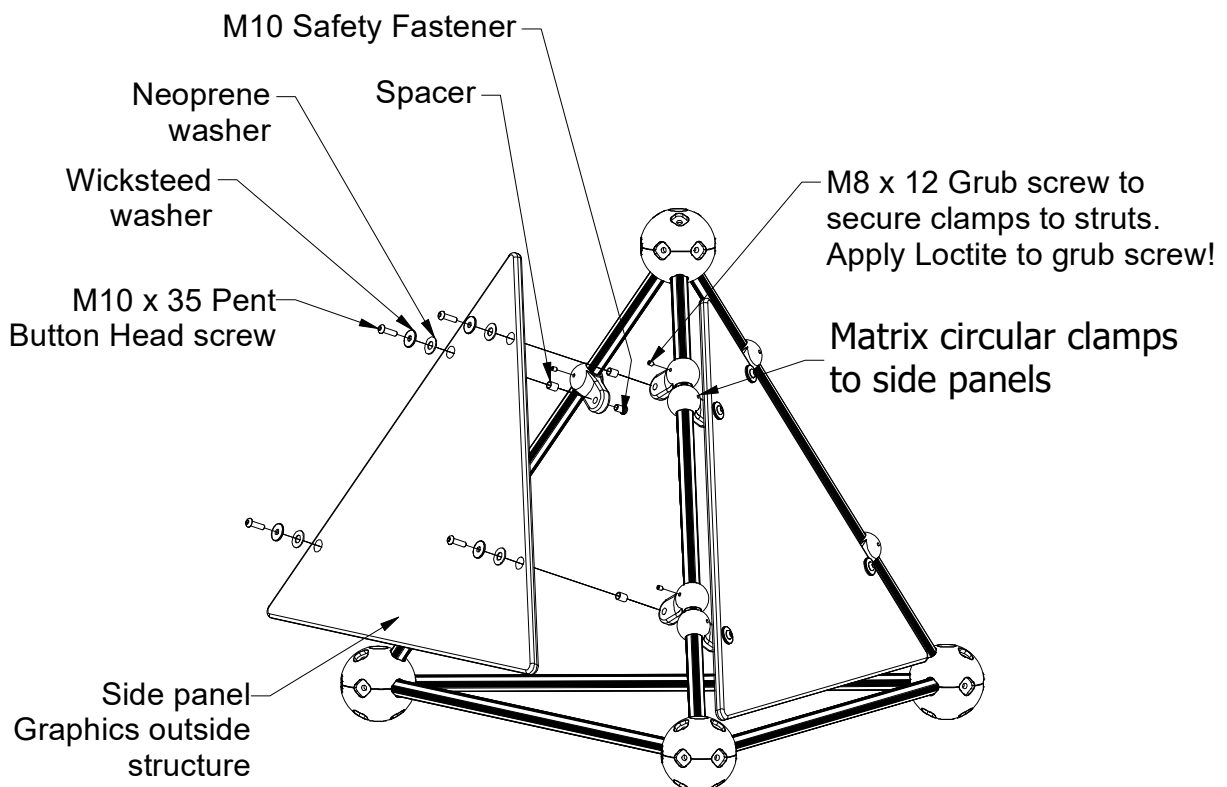
Note - Clamps are fitted **during** structure assembly

Note clamp orientation



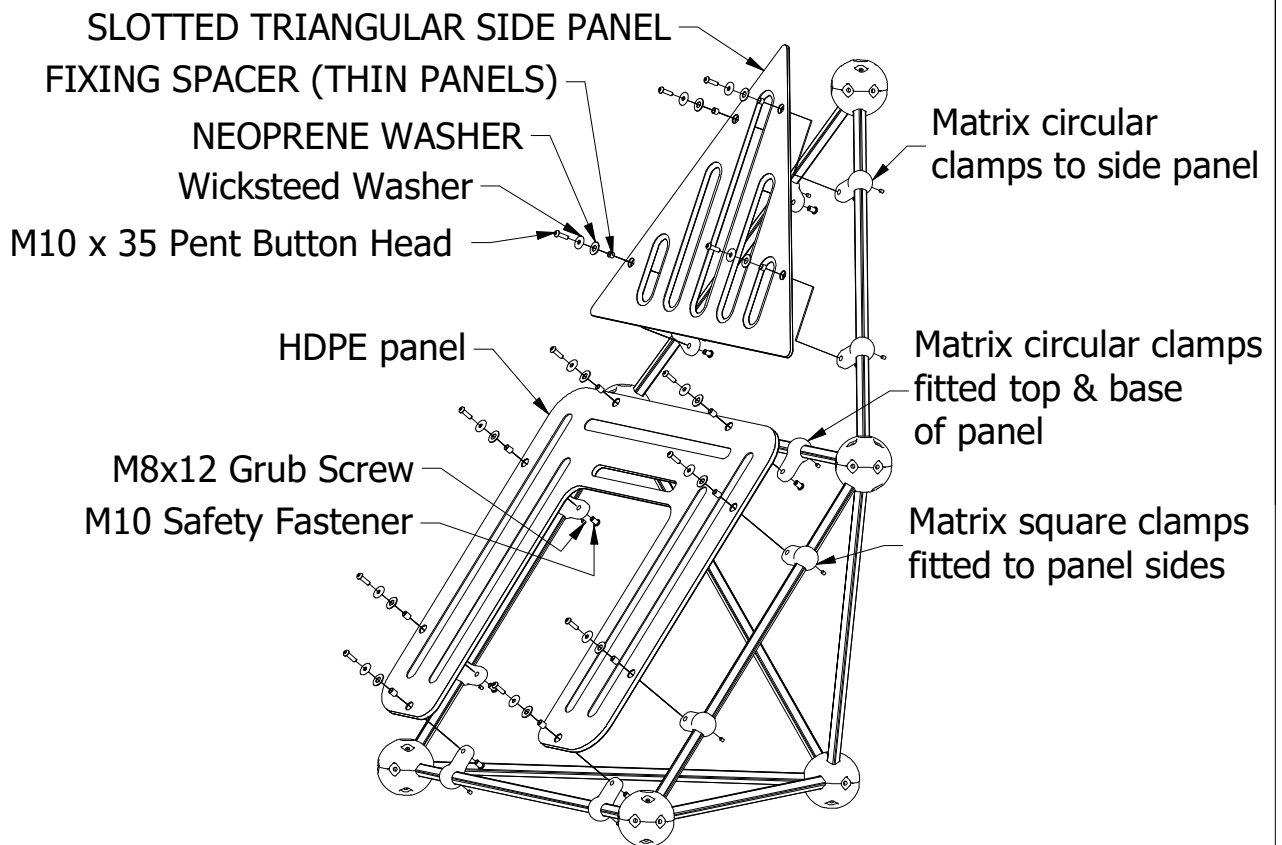
## Typical Side Panel Assembly Detail

Note - Clamps are fitted **during** structure assembly

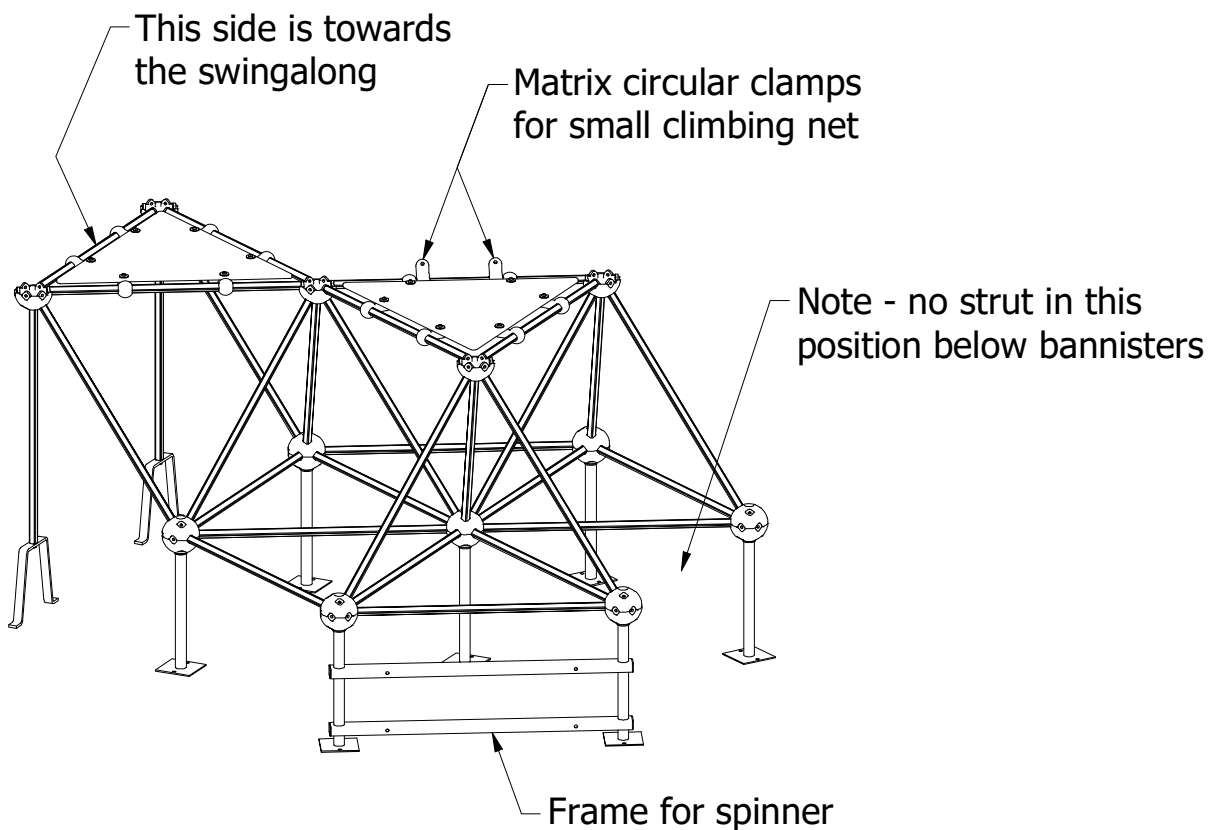


## Typical plastic panel fitting detail

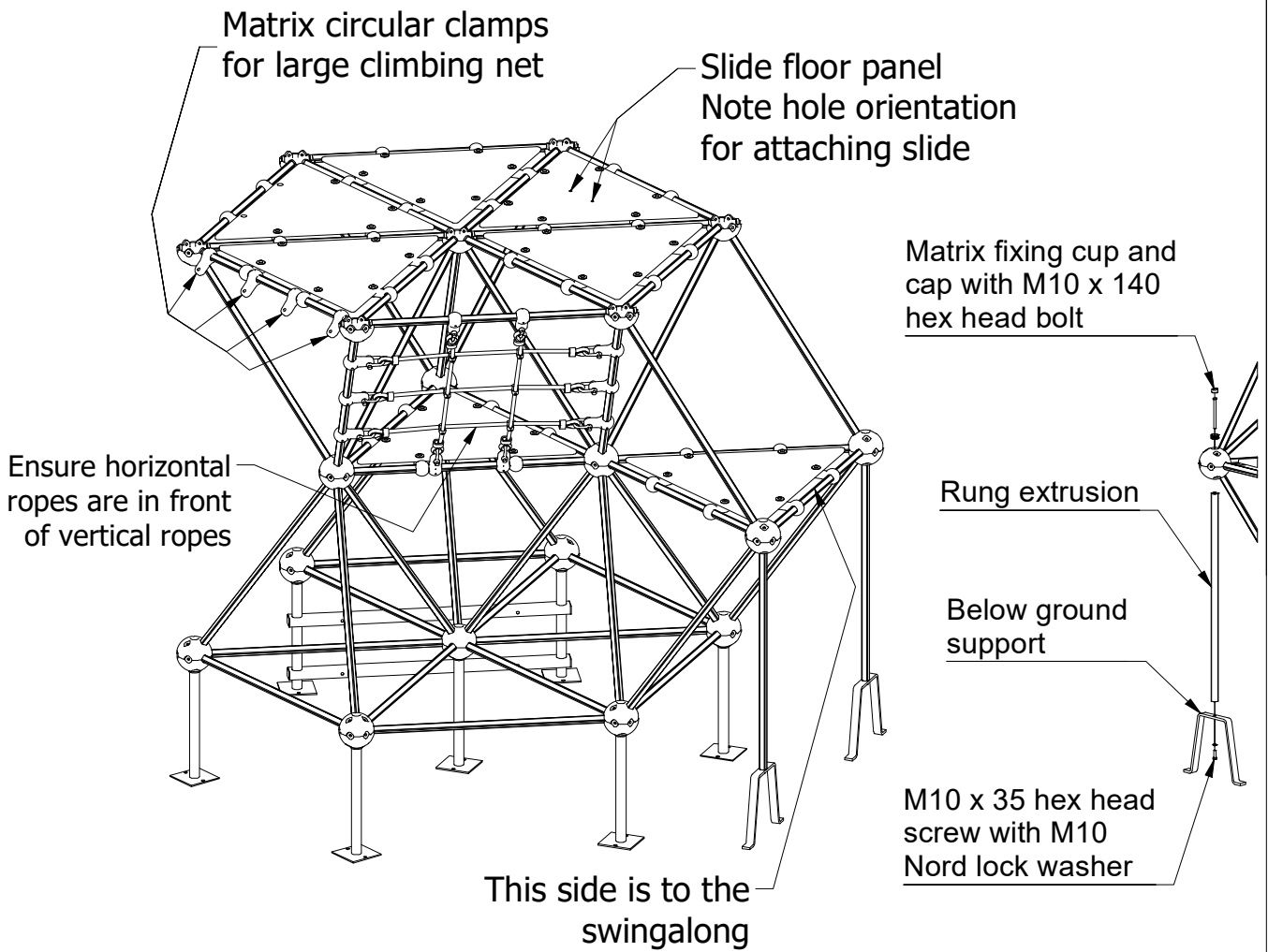
Note - Clamps are fitted **during** structure assembly



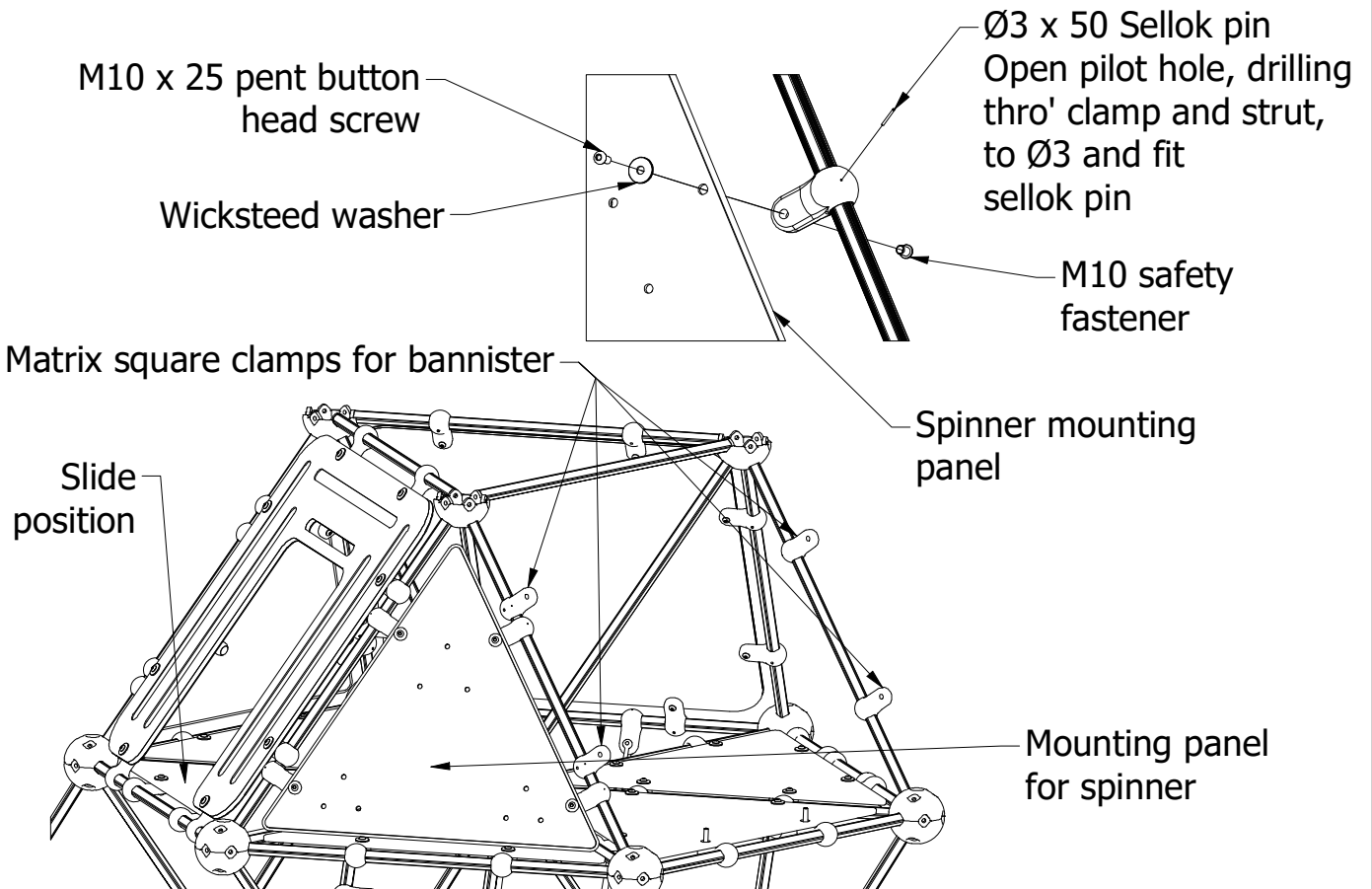
## First layer of Matrix structure



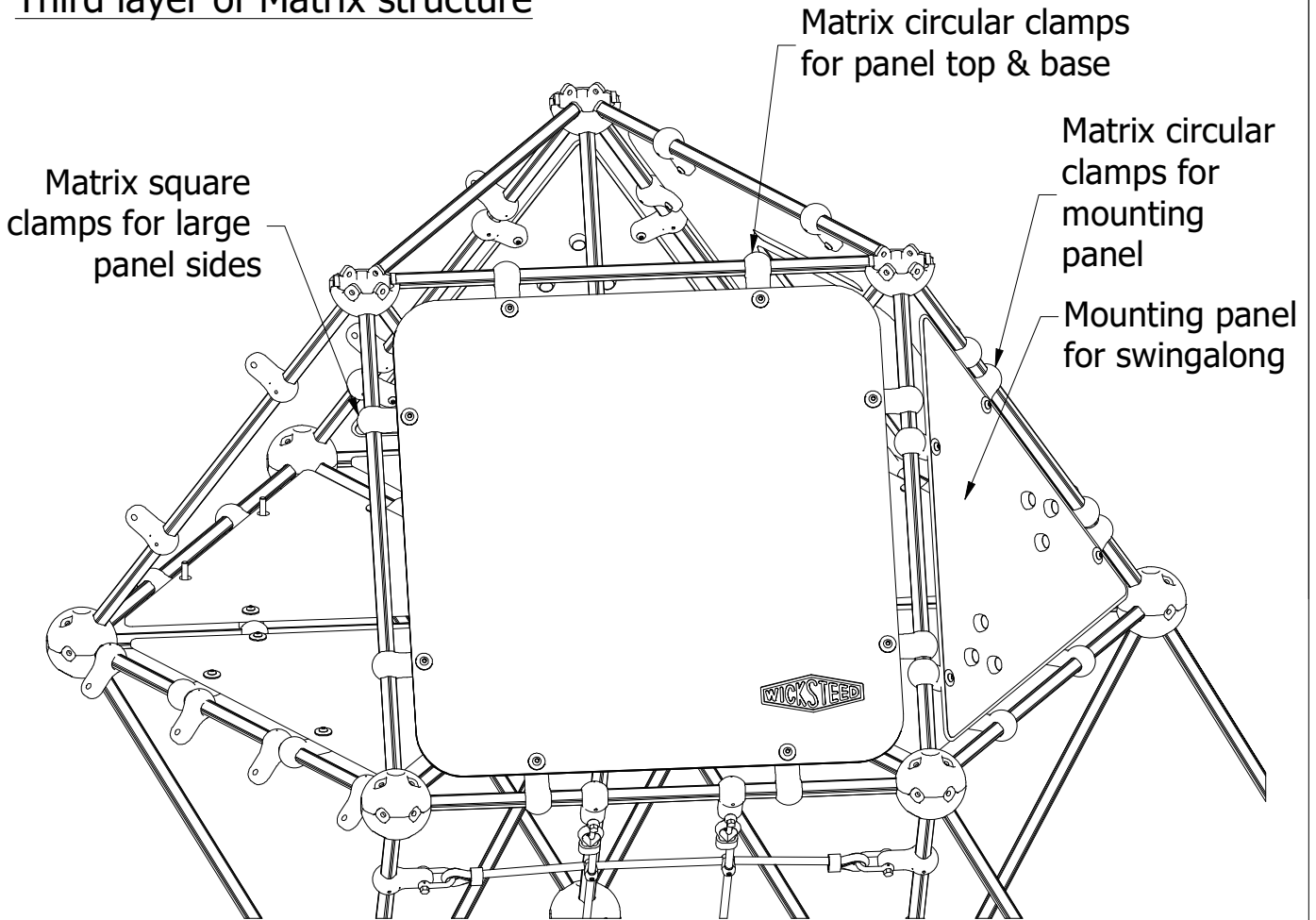
## Second layer of Matrix structure



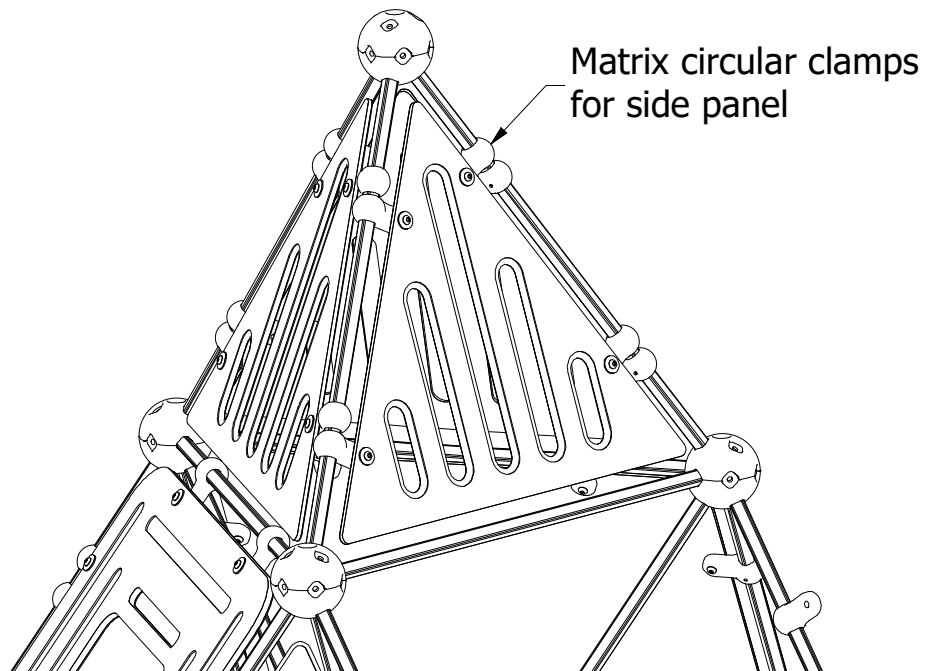
## Third layer of Matrix structure



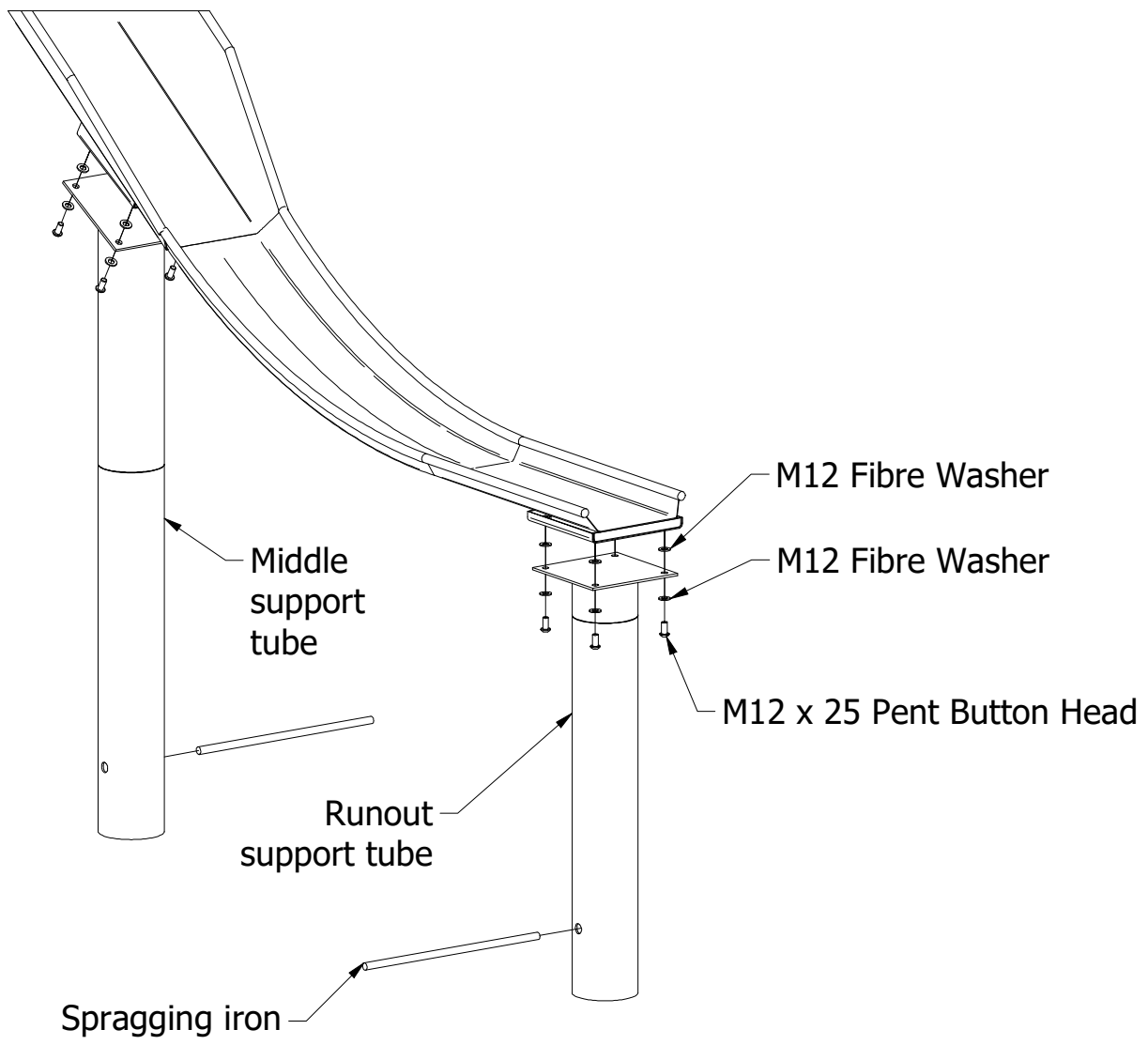
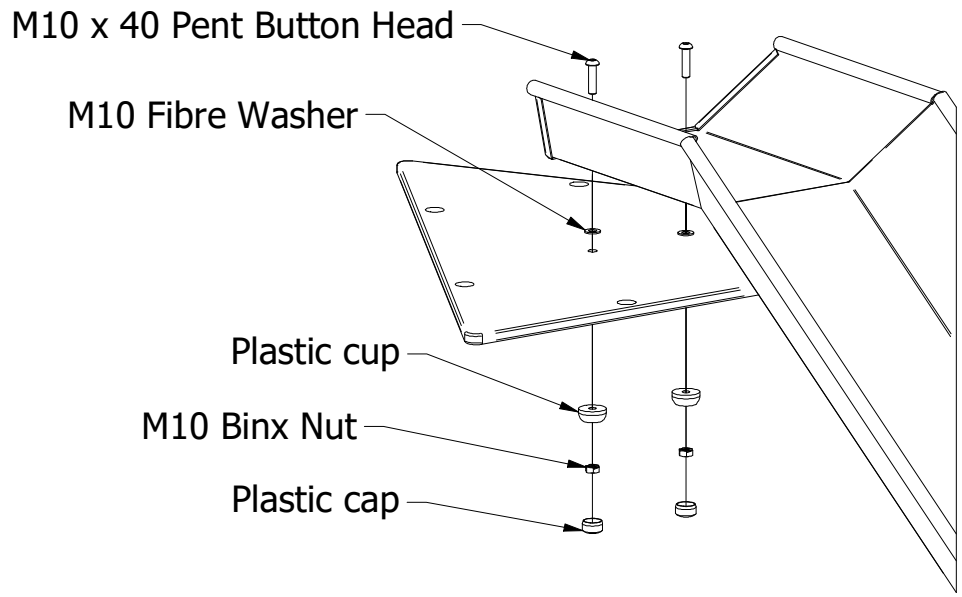
### Third layer of Matrix structure



### Fourth layer of Matrix structure



# Slide fitting details



Ø3 x 50 Sellok Pin  
Open pilot hole, drilling thro' clamp  
and strut, to Ø3 and fit sellok pin

M12 x 50 Pent  
Button Head Screw

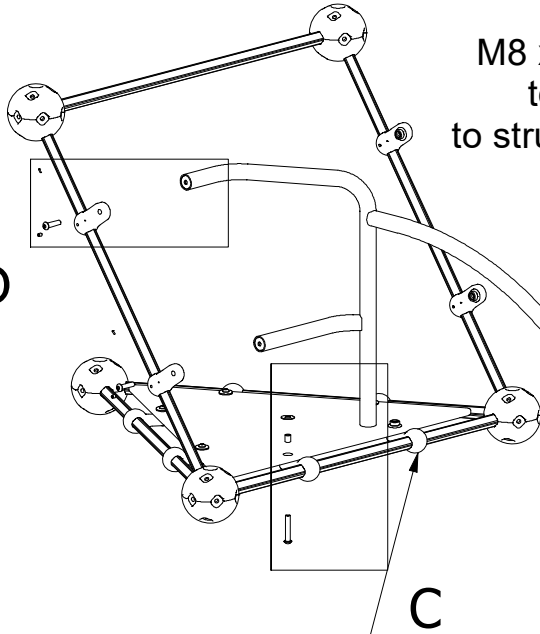
M8 x 12 Grub screw  
to secure clamps  
to strut. Apply Loctite  
to grub screw!

Bannister frame

### Detail D

Bannister fixing to side extrusion

D

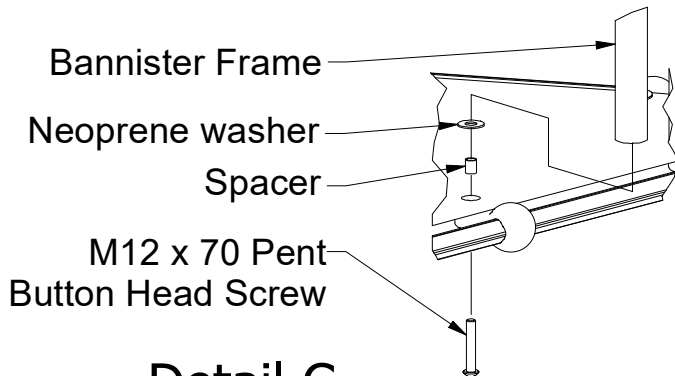


Matrix circular clamps  
for deck panel

Bannister Frame  
Neoprene washer  
Spacer  
M12 x 70 Pent  
Button Head Screw

### Detail C

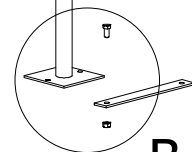
Bannister to panel fixing



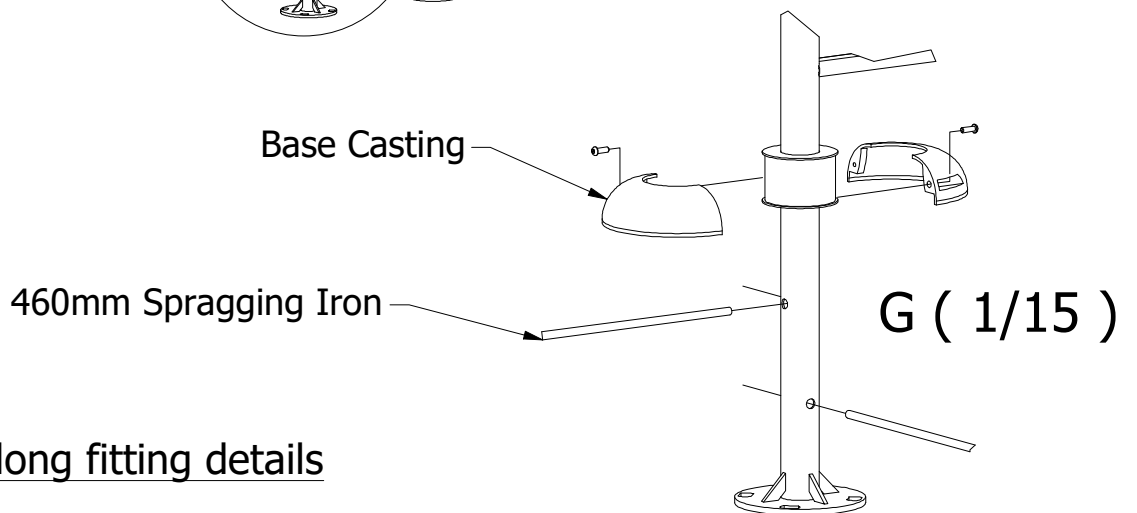
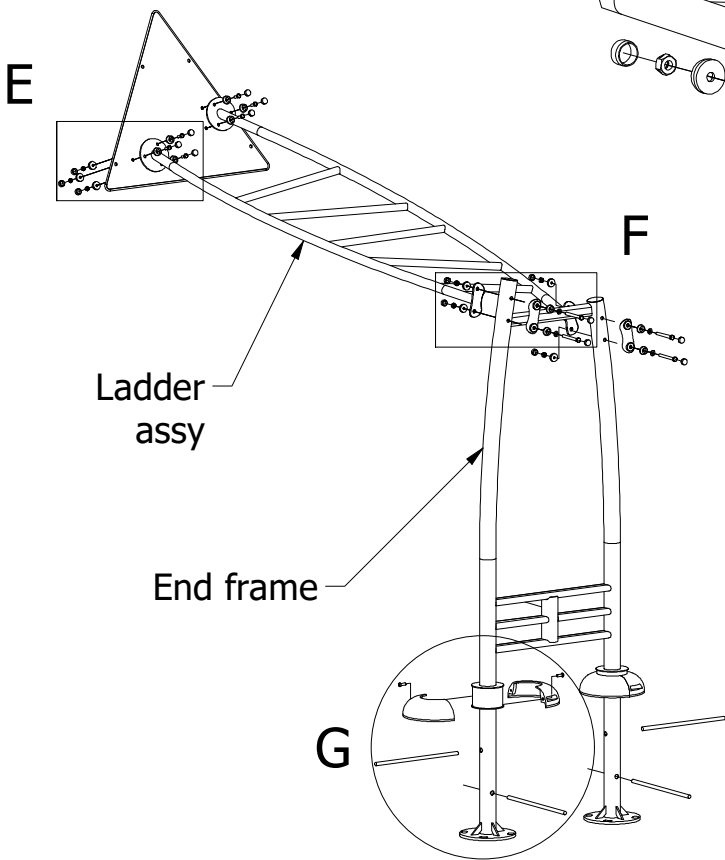
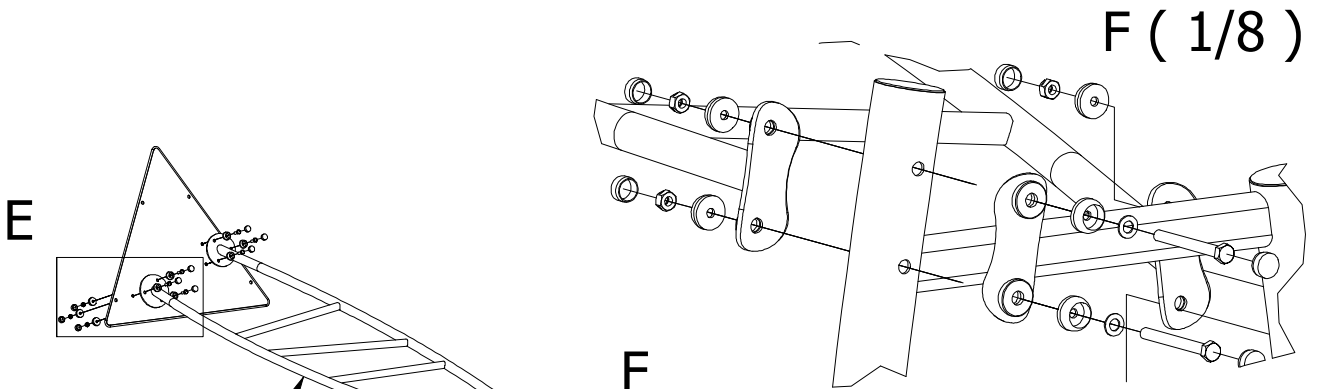
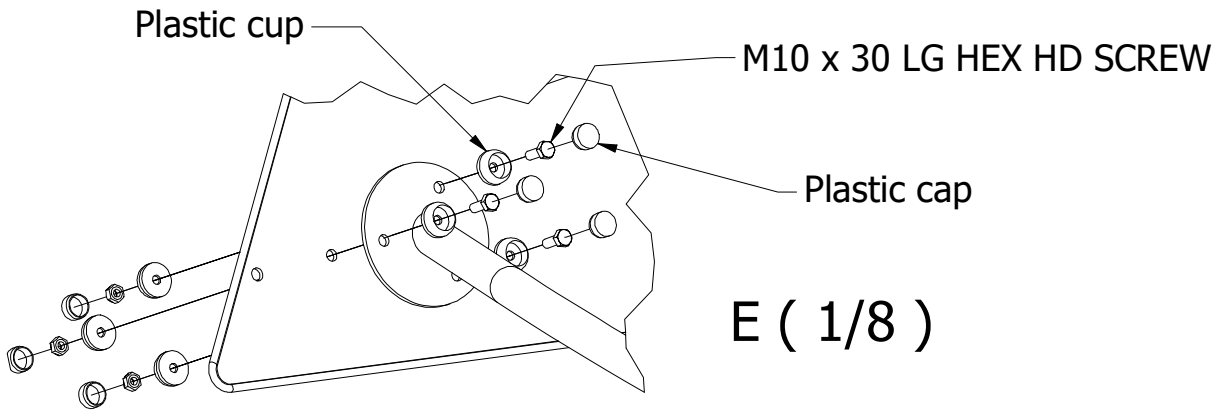
Bannister leg  
M12 x 25 Hex  
Head Screw  
M12 Nut  
Spacing Bar

### Detail B

Bannister ground fixing

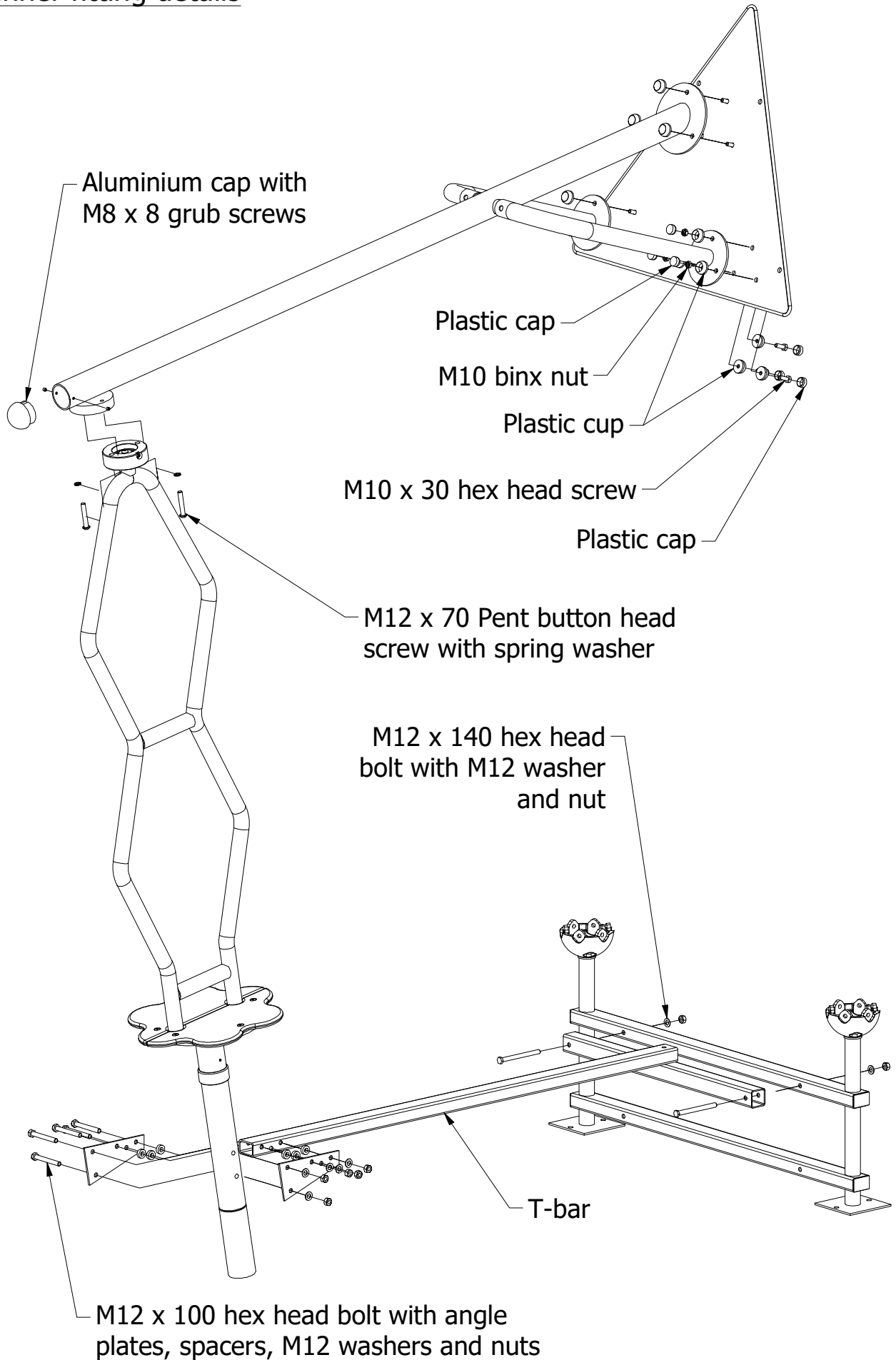


B

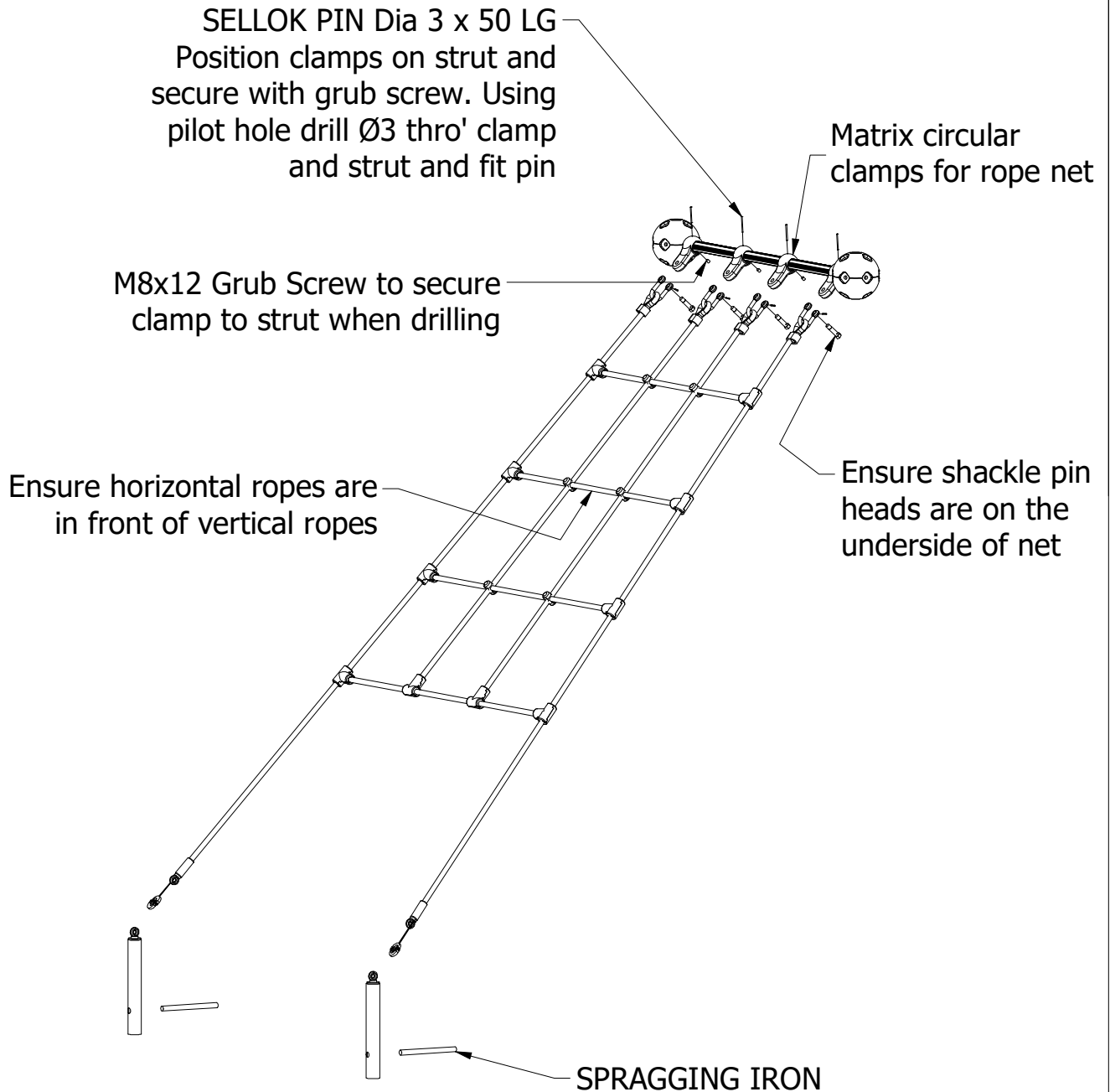


Swingalong fitting details

# Spinner fitting details



## Climbing net fitting details



Parts List

ITEM	QTY	PART NUMBER	DESCRIPTION
1	1	5094-070	Spinner Assy
2	2	5071-024	BELOW GROUND FIXING ASSY
3	1	5031-412	MATRIX SLIDE
4	1	4202-919	SPINNER SUPPORT ASSEMBLY
5	1	4202-356	SPINNER MTG PLATE ASSY
6	1	4202-355	SWINGALONG MTG PLATE ASSY
7	1	4202-354	LADDER ASSY
8	1	4202-353	MATRIX SPINNER FRAME
9	1	4202-352	Matrix T-Bar W.A.
10	1	4202-342	SWINGALONG SUPPORT FRAME

Continued

Parts List

ITEM	QTY	PART NUMBER	DESCRIPTION
11	2	4201-934	FIXING PLATE ASSY
12	1	4201-337	RH BANNISTER
13	1	4201-336	LH BANNISTER
14	5	4201-092	MATRIX BGF
15	1	4141-041	CLIMBING NET
16	1	4141-040	CLIMBING NET
17	2	4061-237	Shackle Link Assembly
18	1	4013-038	PEDESTAL SUPPORT LEG - RUNOUT
19	1	4013-037	PEDESTAL SUPPORT LEG - MIDDLE
20	1	3756-277	"WICKSTEED" SQUARE PANEL
21	3	3755-913	SLOTTED TRIANGULAR SIDE PANEL
22	1	3755-912	SQUARE SLIDE PANEL
23	1	3755-208	SLIDE FLOOR PANEL
24	6	3755-207	FLOOR PANEL
25	39	3730-128	Matrix Fixing Cap
26	144	3730-119	Matrix Fixing Sq. Cap
27	39	3730-118	Matrix Fixing Cup
28	66	3730-100	RUNG EXTRUSION
29	12	3711-050	ROUND BALL CLAMP (PINNED)
30	10	3711-049	SINGLE BALL CLAMP (PINNED)
31	24	3711-048	ROUND BALL CLAMP
32	8	3711-047	DOUBLE BALL CLAMP
33	34	3711-046	SINGLE BALL CLAMP
34	23	3711-043	LOWER HEMISPHERE
35	23	3711-033	UPPER HEMISPHERE
36	2	3201-220	Angle Plate
37	1	3069-008	SPACING BAR
87	2	3066-016	Below Ground Support
38	2	3031-010	SPRAGGING IRON
39	6	3030-430	Spacer
40	4	3030-310	460mm Spragging Iron
41	2	3030-009	SPRAGGING IRON
42	68	2900-041	NEOPRENE WASHER
43	38	2611-032_Cup	Blue Poeppelmann Cup
44	38	2611-032_Cap	Blue Poeppelmann Cap
45	16	2571-013	M12 Fibre Washer
46	2	2571-012	M10 Fibre Washer
47	8	2472-009	FIXING SPACER (15 panel)
48	12	2472-007	FIXING SPACER (THIN PANELS)
49	48	2472-003	FIXING SPACER

Continued

Parts List			
ITEM	QTY	PART NUMBER	DESCRIPTION
50	22	2223-022	SELLOK PIN Dia 3 x 50 LG
51	76	2215-519	Wicksteed Washer
52	11	2215-509	M12 Plain Washer
53	14	2215-508	M10 Washer
88	2	2212-212	M10 NORD LOCK WASHER
54	134	2212-212	M10 NORD LOCK WASHER
55	2	2212-204	M12 Spring Washer
56	132	2212-203	M10 Spring Washer
57	9	2193-007	M12 Nut
58	4	2191-011	M12 Binx Nut
59	33	2191-010	M10 Binx Nut
60	2	2185-086	M12 x 140 HT Hex Head Bolt
61	4	2185-083	M12 x 120 HEX HD BOLT
62	5	2185-081	M12 x 100 HEX HD BOLT
63	9	2185-049	M10 x 140 HEX HEAD BOLT
64	14	2185-048	M10 x 130 Hex Head Bolt
65	76	2177-002	M10 Safety Fastener
66	6	2176-181	M12 x 70 Pent Button Head
67	4	2176-179	M12 x 50 Pent Button Head
68	8	2176-176	M12 x 25 Pent Button Head
69	2	2176-133	M10 x 40 Pent Button Head
70	4	2176-132	M10 x 30 Pent Button Head
71	68	2176-127	M10 x 35 Pent Button Head
72	8	2176-126	M10 x 25 Pent Button Head
73	2	2175-134	M12 x 25 LG HEX HD SCREW
89	2	2175-117	M10 x 35 LG HEX HD SCREW
74	15	2175-116	M10 x 30 LG HEX HD SCREW
75	88	2171-115	M8x12 Grub Screw
76	134	2171-093	M10 x 35 SKT CAP HEAD SCREW
77	132	2171-035	M10 x 25 Skt Hd Cap Screw
78	4	20010-009	BASE CASTING

FOR BARK FIX ADD			
ITEM	QTY	PART NUMBER	DESCRIPTION
79	1	5094-071	Spinner Assembly (Loosefill)
80	2	5071-026	BARK BELOW GROUND FIXING (for net)
81	17	5071-028	Z-SHAPED BELOW GROUND FIXING
82	17	2175-116	M10 x 30 LG HEX HD SCREW
83	17	2193-006	M10 Nut

Z-shaped below ground fixings are to be fitted to the bannister (2 off) & swingalong support frame (8 off)

Top of foundations for the spinner and swingalong are to be 300 below finished surface with corners rounded off as above