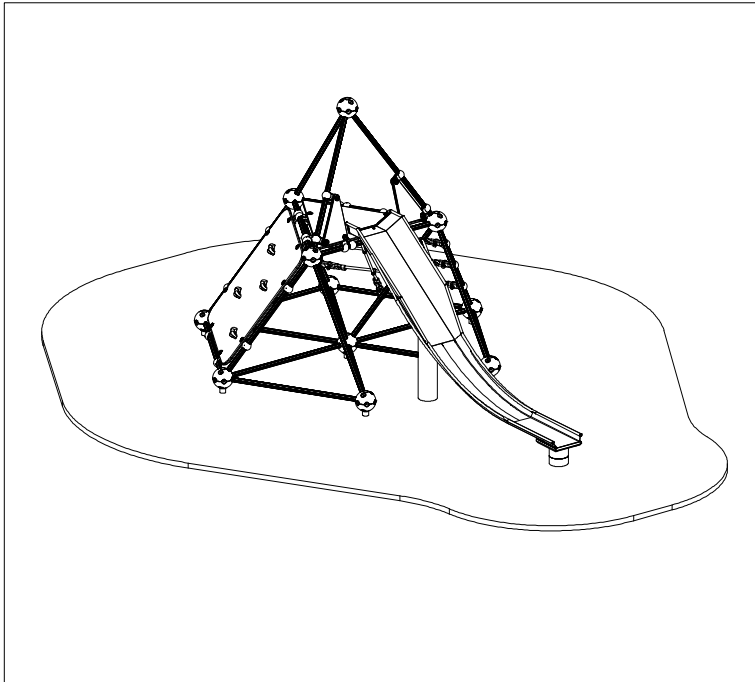



Installation Instructions



Matrix	
Mini Matrix	
PROD. CODE	6030-056
SIZE	2.41x3.74x2.03m
AGE RANGE	5 to 12 years
F/ FALL HEIGHT	1.10m
HEAVIEST PART	Approx 31 kg
TOTAL WEIGHT	Approx 205 kg


100 YEARS OF PLAY
- SINCE 1918 -

General Installation Instructions

In accordance with 6.1.3 EN1176-1:2008 we recommend that slides do not face south or near due south due to heat build up.

- 1 Read instructions thoroughly before commencing installation of unit
- 2 Excavate foundations as shown in the plan
- 3 WHEN ASSEMBLING UNIT ENSURE CLAMPS ARE FITTED ON THE CORRECT STRUT IN THE CORRECT ORIENTATION
- 4 Assemble unit and clamps (loosely) and fit below ground fixings
- 5 Position on bricks in excavated holes
- 6 Fit panels and net and secure clamps
- 7 Assemble slide and position on bricks in holes
- 8 Secure slide to deck
- 9 Backfill all holes with a total of 0.71m³ concrete (4 parts gravel/2 parts sand/1 part cement)
- 10 Allow concrete to set for 48 hours

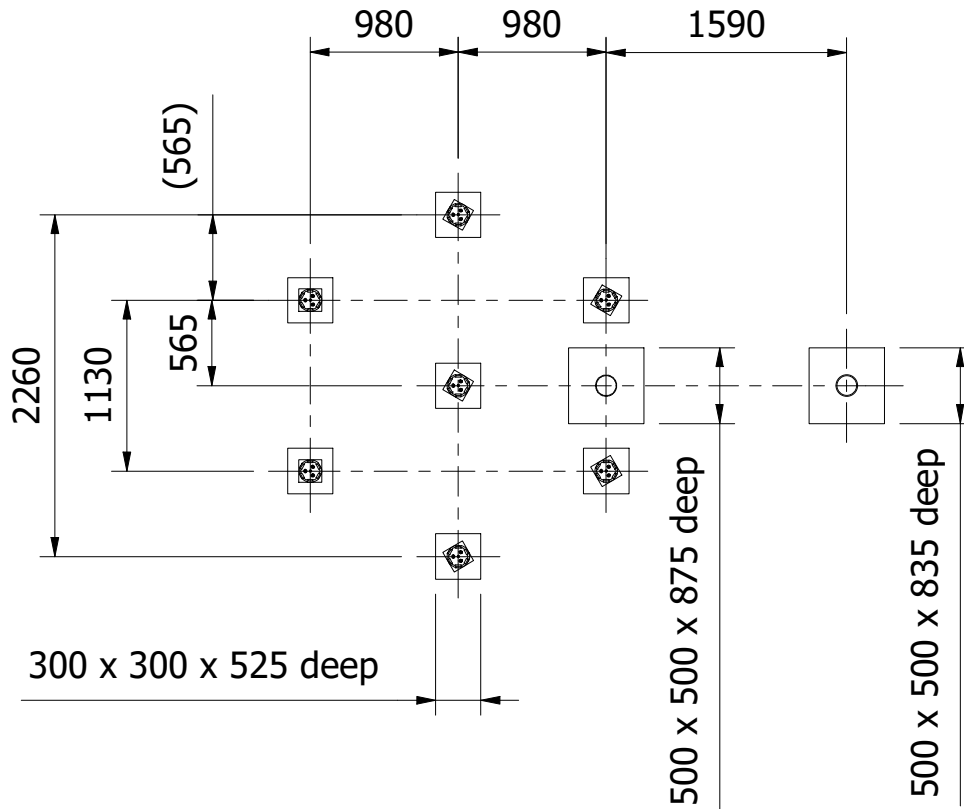
General Assembly Notes

- Make sure the Nord lock washers are used on the fixings inside the spheres
- When assembling sections leave the fixings inside the spheres loose as this allows the strut extrusions movement which makes locating the opposite end easier
- Before fixing the spheres together ensure all fixings inside are tight
- Some clamps have round holes, others have flats - see following sheet for identification
- Ensure grub screws are used to secure clamps on the struts and apply loctite to screw
- Ensure plastic caps are fitted in unused holes in the spheres
- Ensure M10 x 35 socket cap head screws inside spheres and the M10 x 130 and M10 x 140 hex head bolts are all tightened to a torque of 50Nm (Tooling supplied by installer)

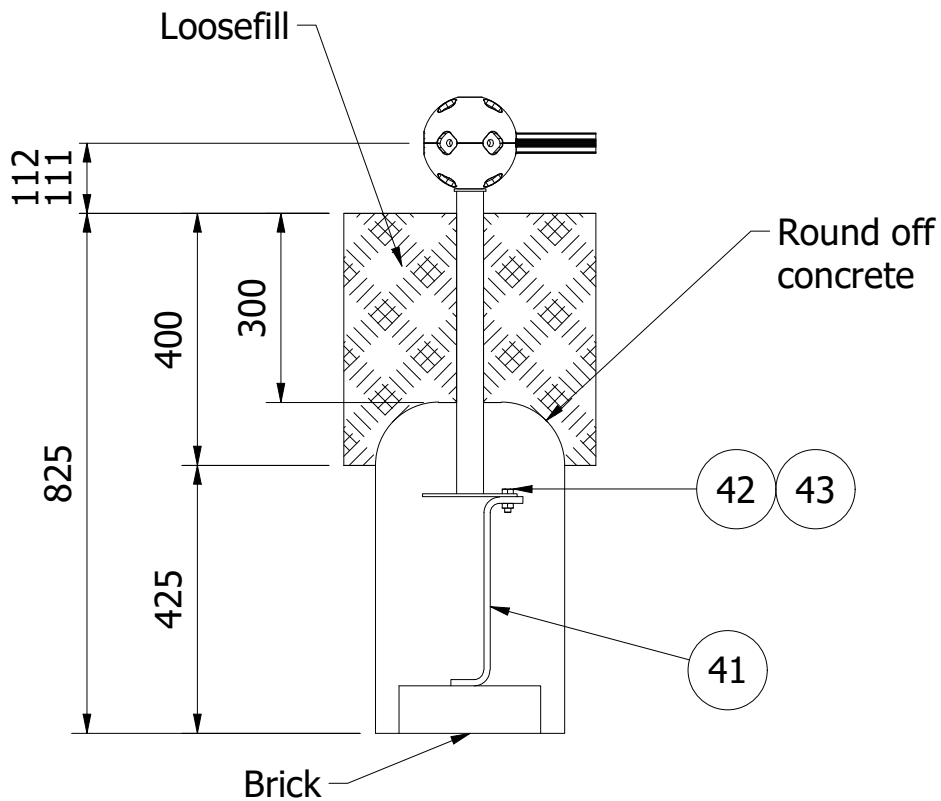
Note:- 1. Ensure all installation aids are removed before first use.
2. Lifting Equipment or sufficient manpower should be used throughout installation.

Foundation Details

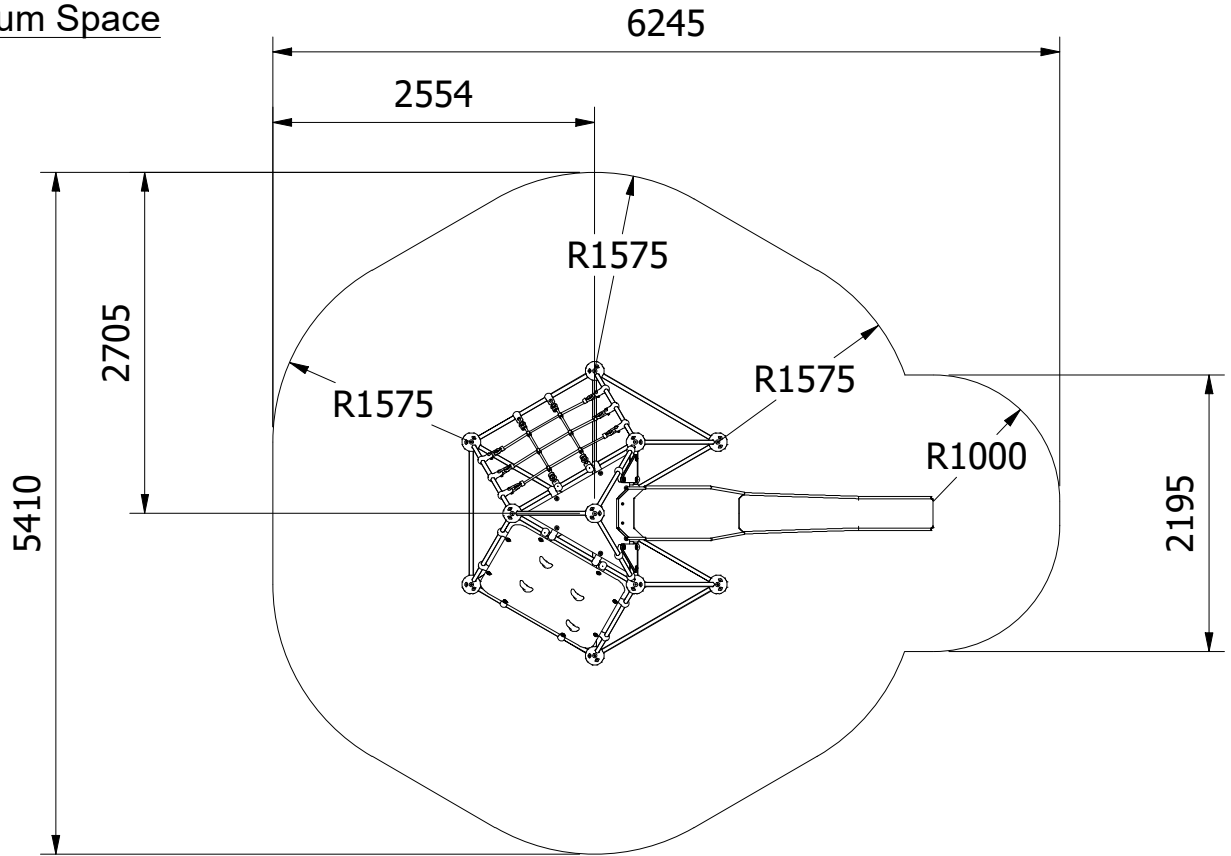
Care must be taken in abnormal conditions



For Bark Fix

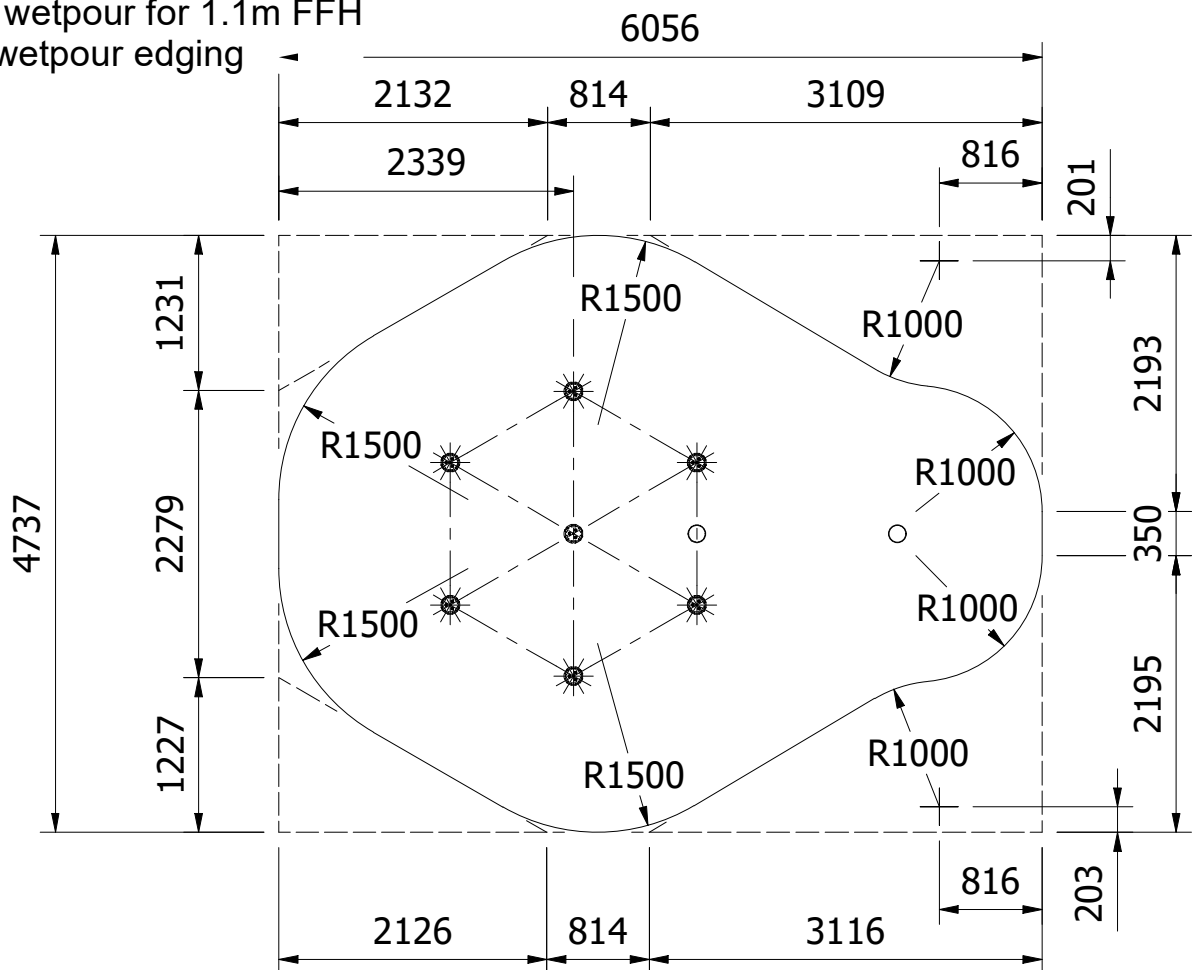


Minimum Space

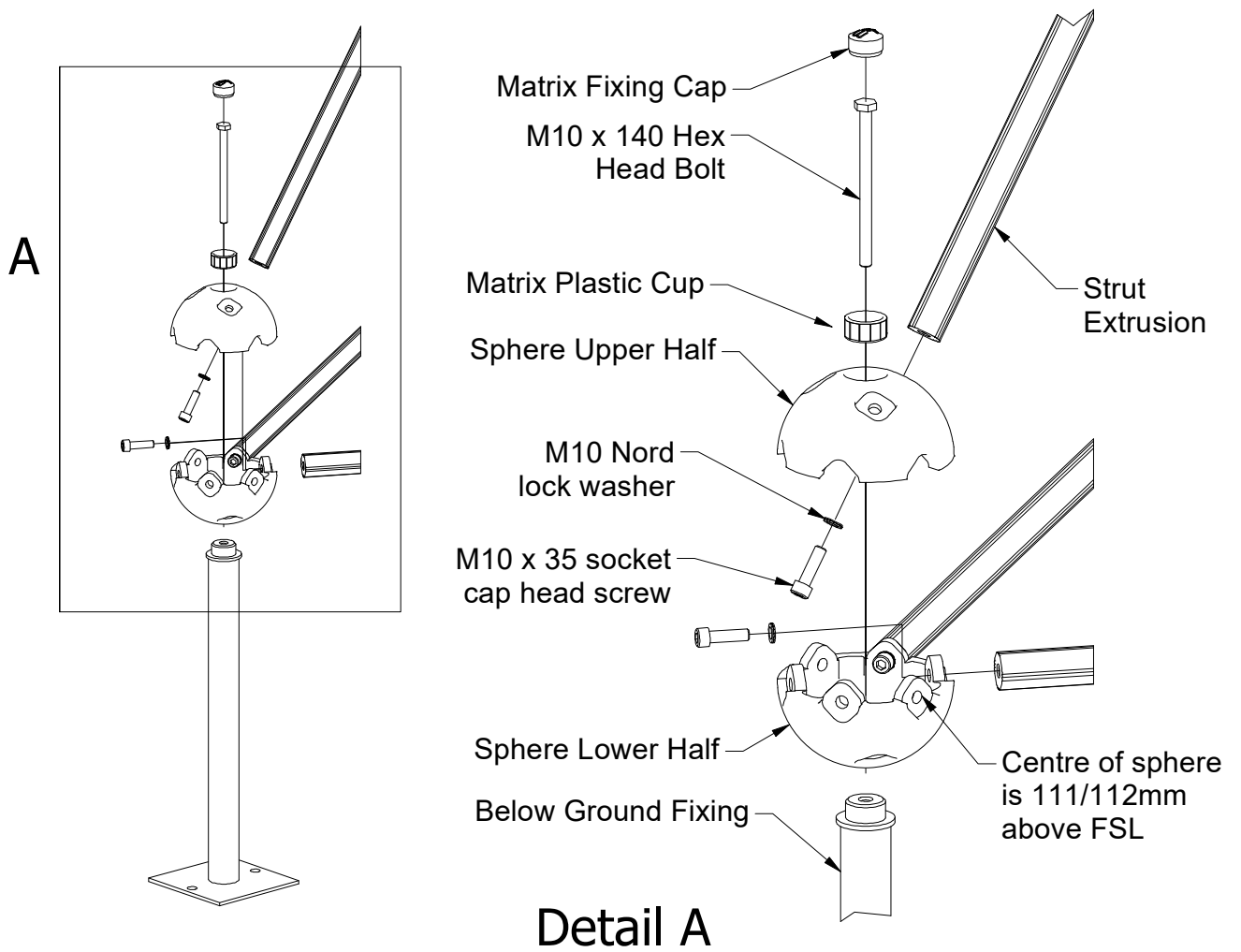


Safety Surfacing

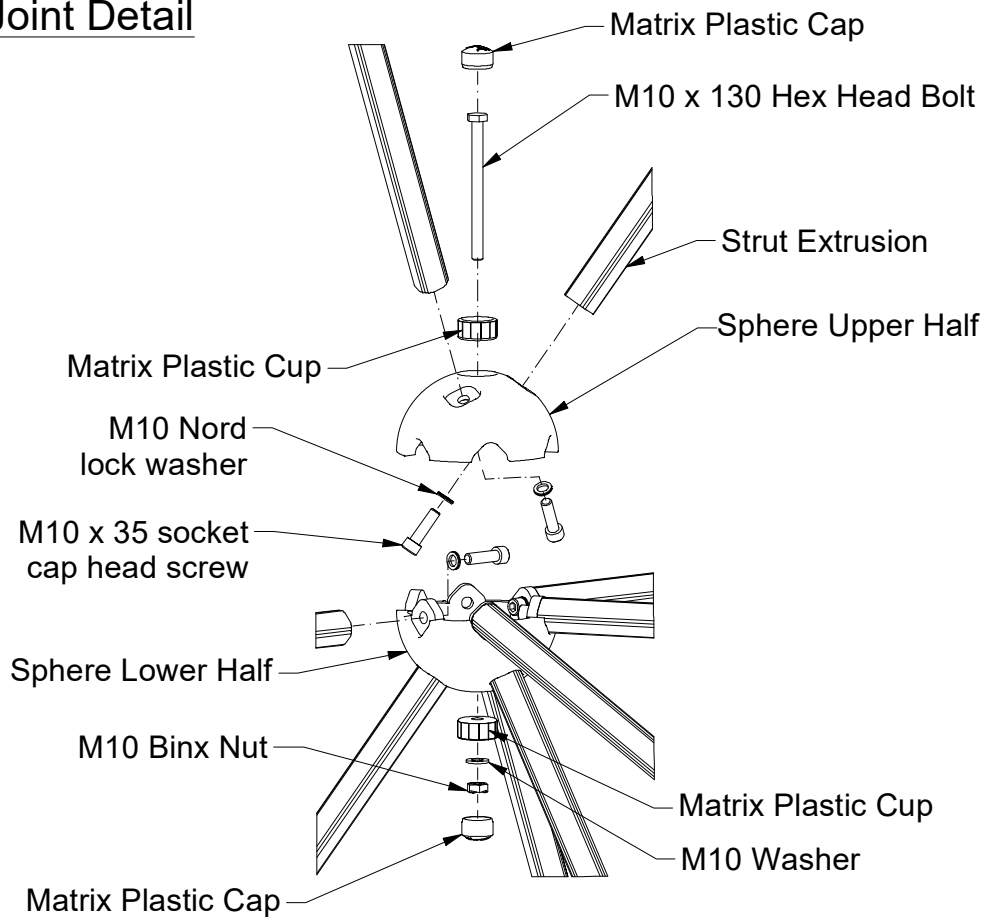
20 m² of wetpour for 1.1m FFH
 17 m of wetpour edging



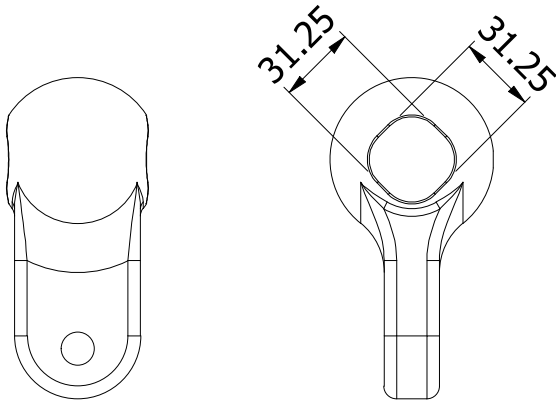
Below Ground Fixing Arrangement



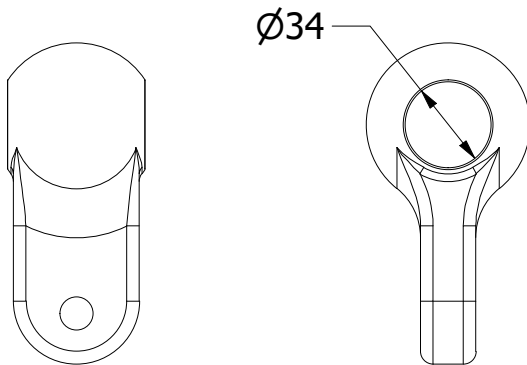
Typical Joint Detail



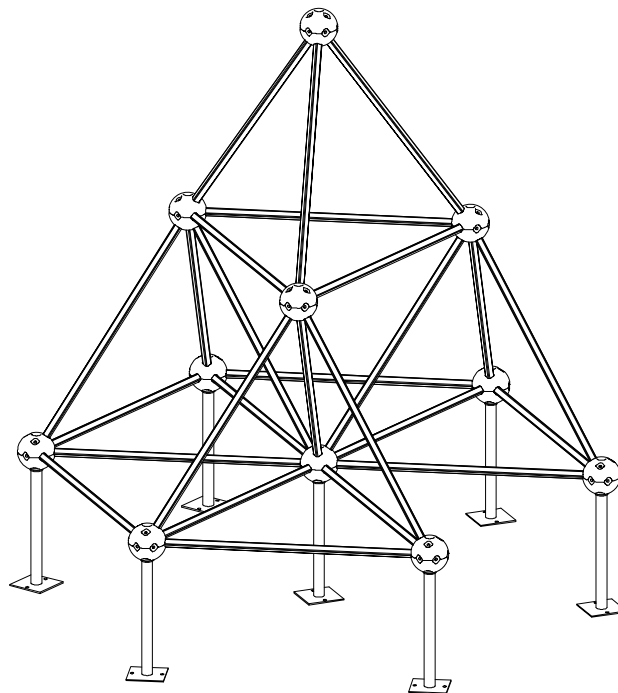
Clamp Details



Matrix square clamp 3711-046
(3711-049 if drilled for pin)
Used for deck, sides of nets
and bannisters

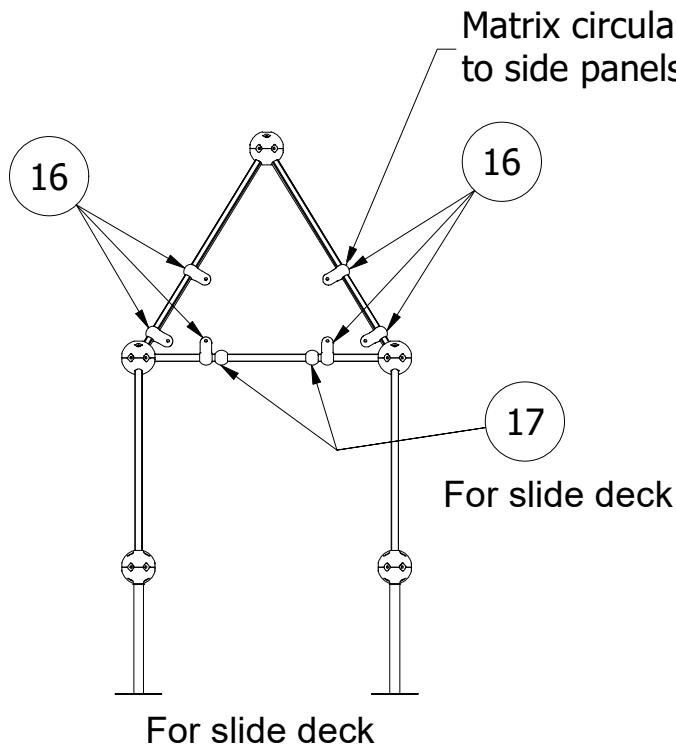


Matrix circular clamp 3711-048
(3711-050 if drilled for pin)
Used for panels that fit on
the side of the Matrix unit
and across top and bottom
of nets

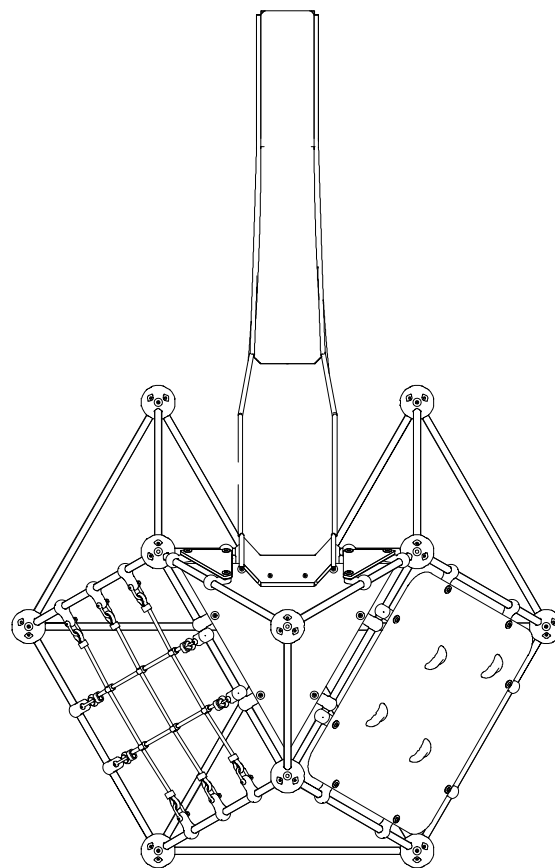


Structure Assembly

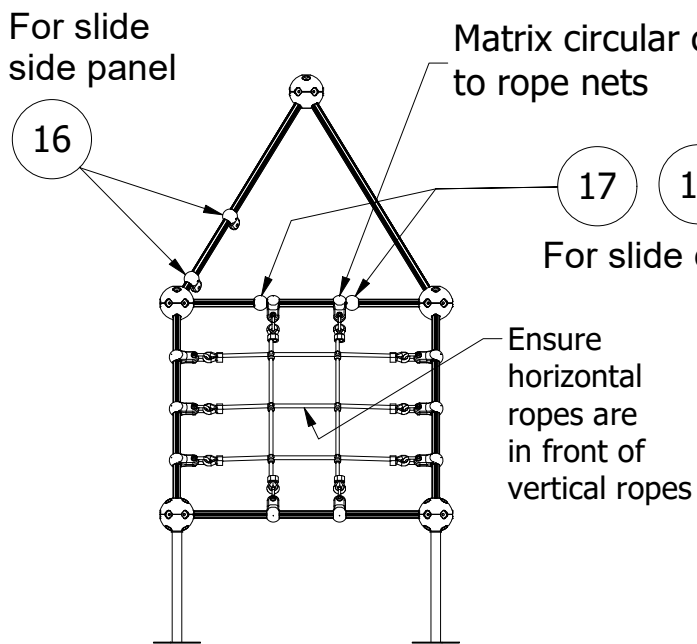
DO NOT ASSEMBLE WITHOUT CLAMPS
REFER TO NEXT PAGES FOR CLAMP POSITIONS



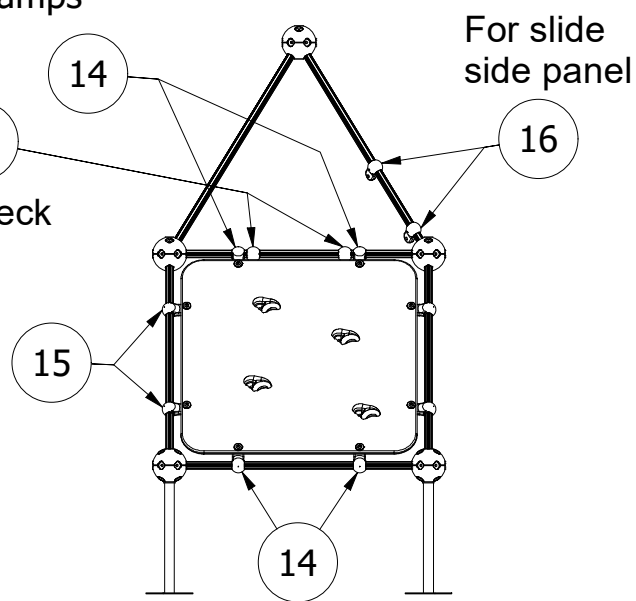
View on Slide side of structure showing clamp positions



For slide deck

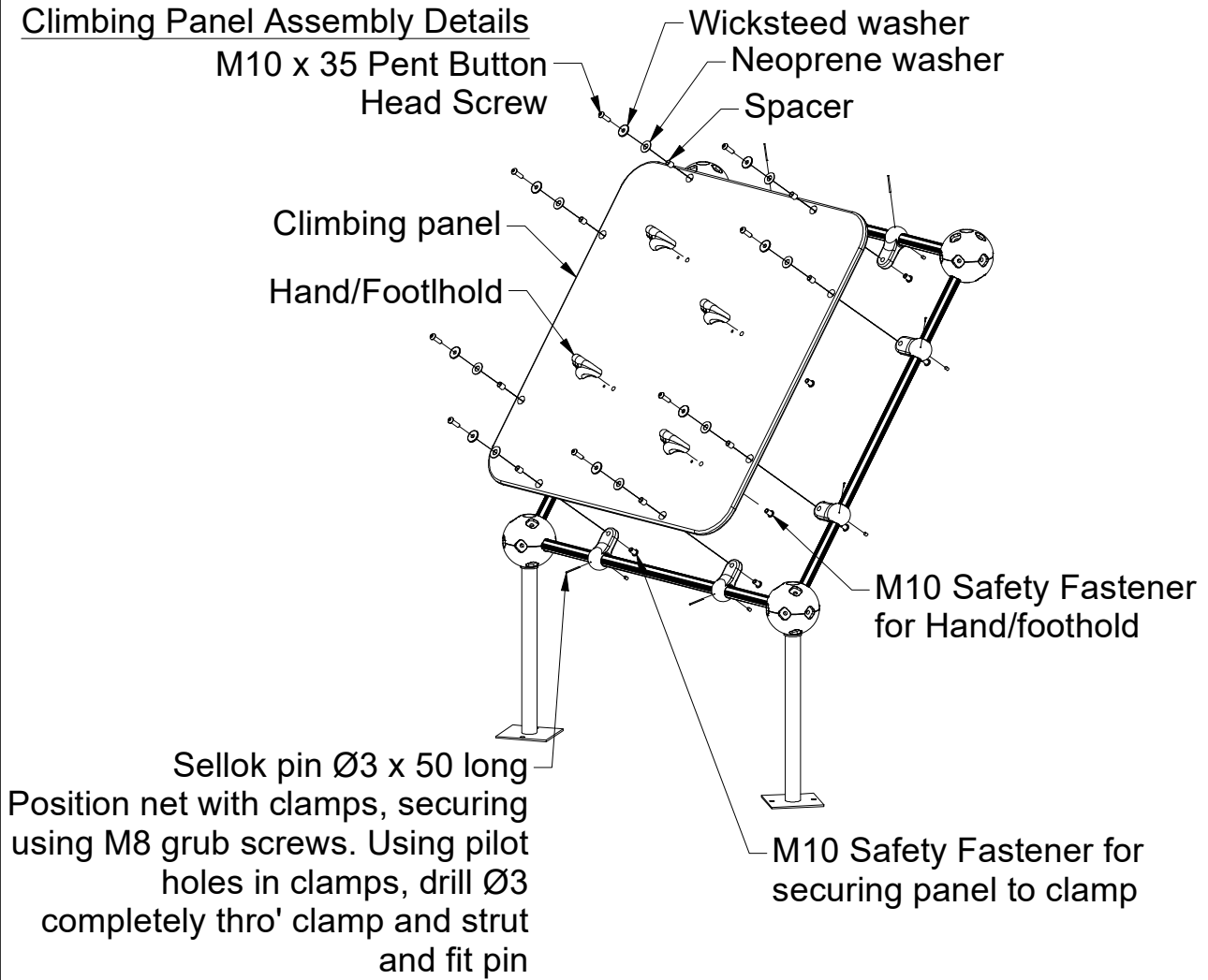


View on Net side of structure showing clamp positions

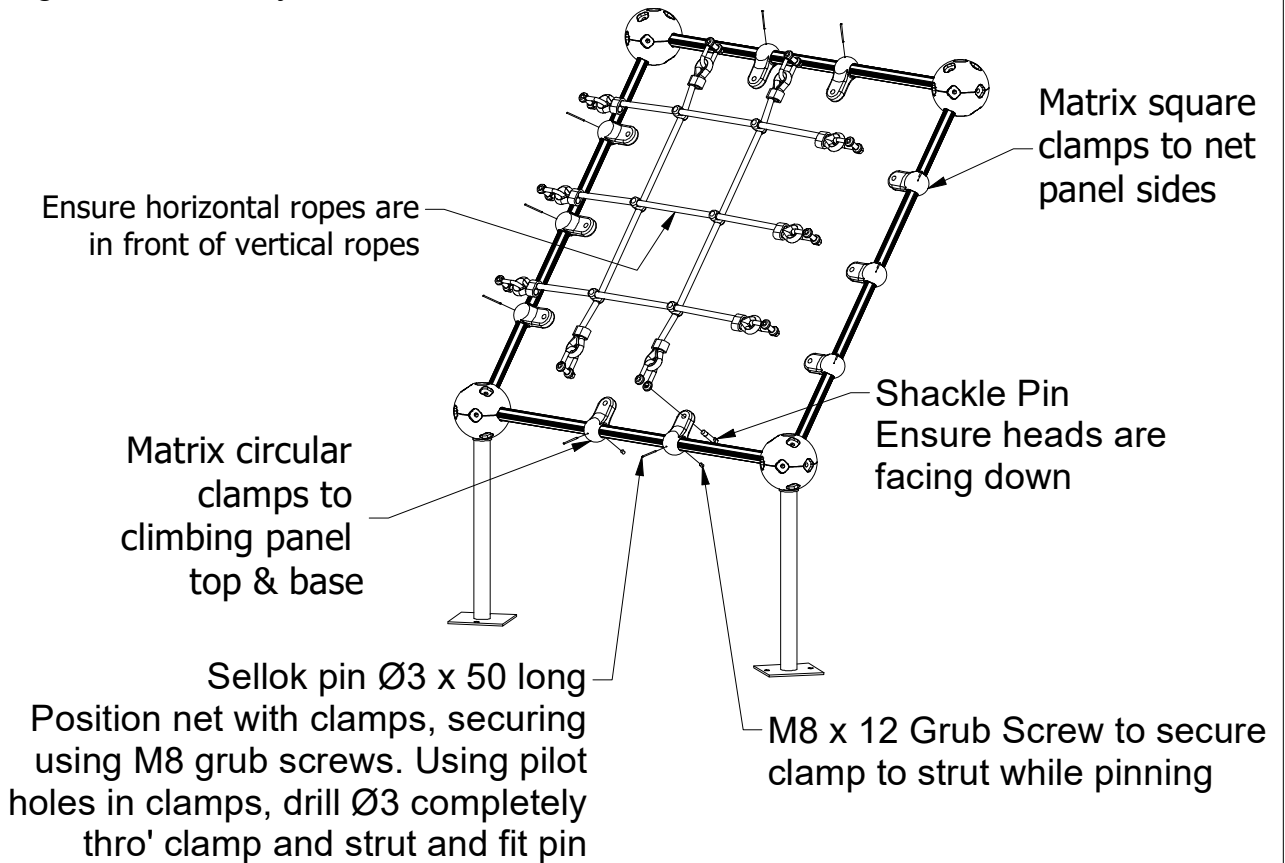


View on Panel side of structure showing clamp positions

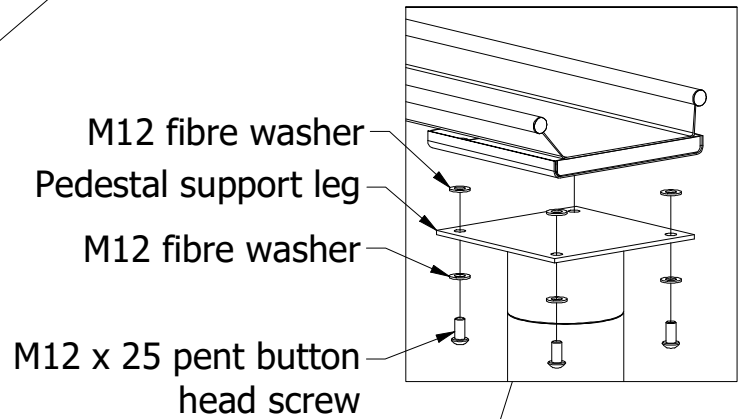
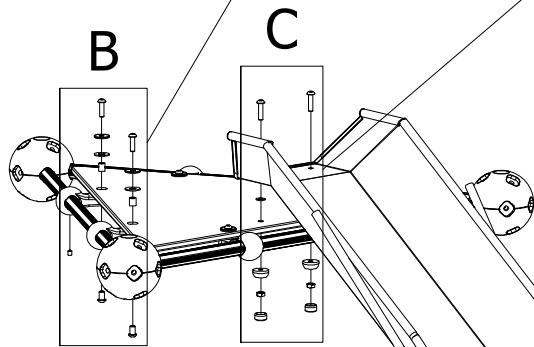
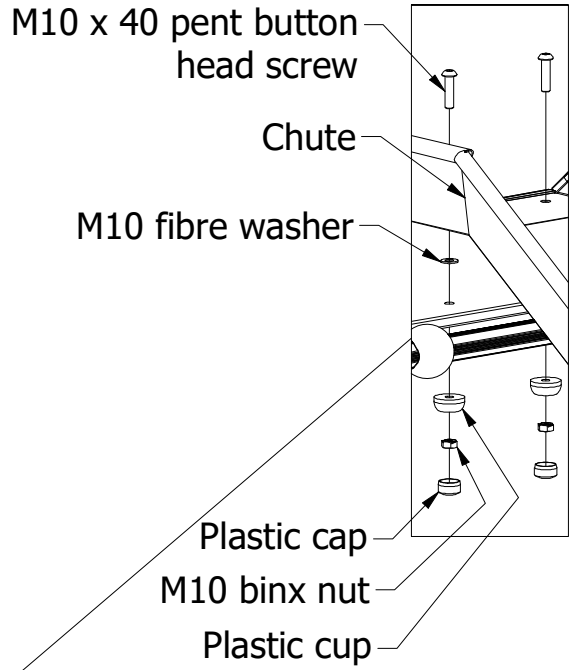
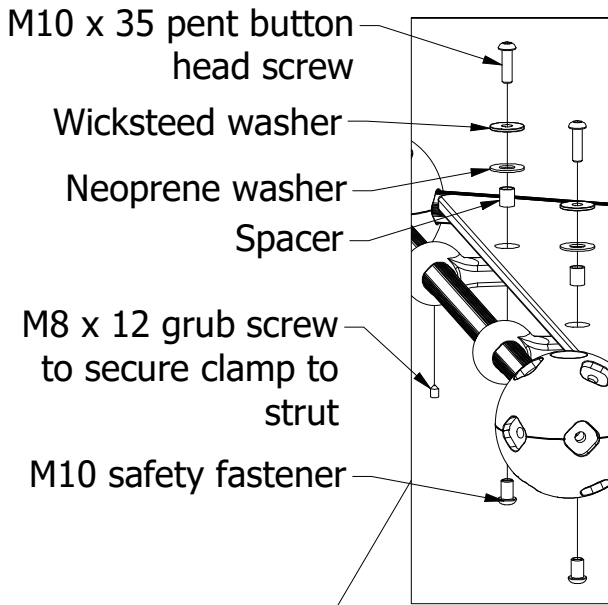
Climbing Panel Assembly Details



Climbing Net Assembly Details



Slide Assembly Detail



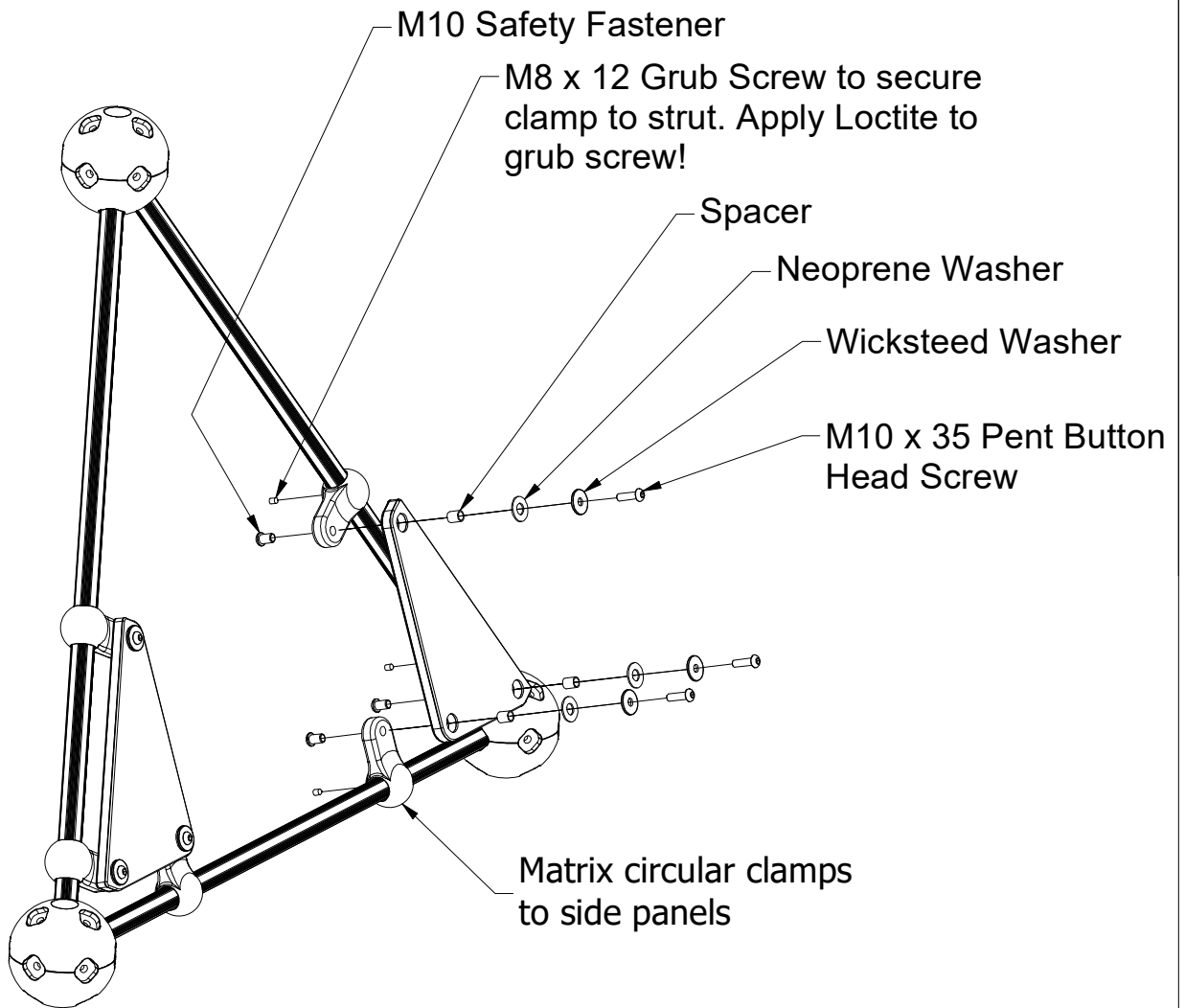
Pedestal support leg - middle

Pedestal support leg - runout

Spragging iron

D

Slide side panel fitting details



ITEM	QTY	PART NUMBER	DESCRIPTION
1	4	80144-03	HAND/FOOTHOLD
2	1	5031-413	MATRIX SLIDE
3	7	4201-092	MATRIX BGF
4	1	4141-040	CLIMBING NET
5	1	4013-038	PEDESTAL SUPPORT LEG - RUNOUT
6	1	4013-037	PEDESTAL SUPPORT LEG - MIDDLE
7	1	3755-263	SLIDE FLOOR PANEL
8	1	3755-262	SQUARE CLIMBING PANEL
9	2	3755-258	SLIDE SIDE PANEL
10	15	3730-128	Matrix Fixing Cap
11	80	3730-119	Matrix Fixing Sq. Cap
12	15	3730-118	Matrix Fixing Cup
13	26	3730-100	RUNG EXTRUSION
14	8	3711-050	ROUND BALL CLAMP (PINNED)
15	10	3711-049	SINGLE BALL CLAMP (PINNED)
16	6	3711-048	ROUND BALL CLAMP
17	6	3711-046	SINGLE BALL CLAMP

Continued

ITEM	QTY	PART NUMBER	DESCRIPTION
18	11	3711-043	LOWER HEMISPHERE
19	11	3711-033	UPPER HEMISPHERE
20	2	3030-009	SPRAGGING IRON
21	20	2900-041	NEOPRENE WASHER
22	2	2611-032_Cup	Blue Poeppelmann Cup
23	2	2611-032_Cap	Blue Poeppelmann Cap
24	16	2571-013	M12 Fibre Washer
25	2	2571-012	M10 Fibre Washer
26	20	2472-003	FIXING SPACER
27	18	2223-022	SELLOK PIN Dia 3 x 50 LG
28	20	2215-519	Wicksteed Washer
29	4	2215-508	M10 Washer
30	52	2212-212	M10 NORD LOCK WASHER
31	6	2191-010	M10 Binx Nut
32	7	2185-049	M10 x 140 HEX HEAD BOLT
33	4	2185-048	M10 x 130 Hex Head Bolt
34	24	2177-002	M10 Safety Fastener
35	8	2176-176	M12 x 25 Pent Button Head
36	2	2176-133	M10 x 40 Pent Button Head
37	20	2176-127	M10 x 35 Pent Button Head
38	30	2171-115	M8x12 Grub Screw
39	52	2171-093	M10 x 35 SKT CAP HEAD SCREW
40	1	1811-003	Tube of Loctite

* Matrix square caps are to be fitted in all unused holes in the spheres

FOR BARK FIX ADD			
ITEM	QTY	PART NUMBER	DESCRIPTION
41	7	5071-028	Z-SHAPED BELOW GROUND FIXING
42	7	2175-116	M10 x 30 LG HEX HD SCREW
43	7	2193-006	M10 Nut