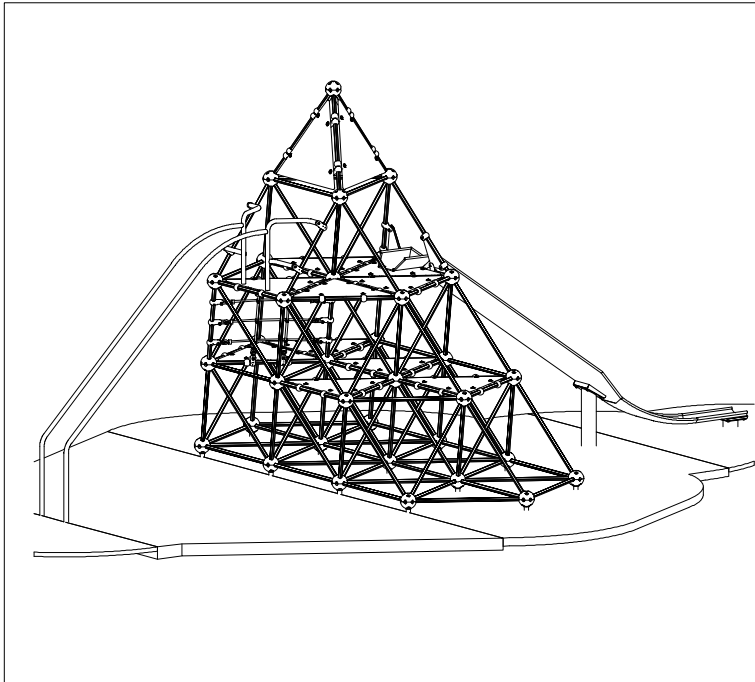


Installation Instructions



Matrix

K4

PROD. CODE	6030-057
SIZE	4.67 x 8.04 x 3.9
AGE RANGE	10 Years to Adult
F/ FALL HEIGHT	2590mm
HEAVIEST PART	Approx 47 Kg
TOTAL WEIGHT	Approx 587 Kg



100 YEARS OF PLAY
- SINCE 1918 -

General Installation Instructions

In accordance with 6.1.3 EN1176-1:2008 we recommend that slides do not face south or near due south due to heat build up.

- 1 Read instructions thoroughly before commencing installation of unit
- 2 Excavate foundations as shown in the foundation plan
- 3 **WHEN ASSEMBLING UNIT ENSURE CLAMPS ARE FITTED ON THE CORRECT STRUT IN THE CORRECT ORIENTATION**
- 4 Assemble unit, positioning on bricks in excavated holes, ensuring it is plumb, square, at the correct height and orientation
- 5 Fit panels to clamps
- 6 Position slide on bricks in excavated holes and attach to panel
- 7 Position bannister slide in excavated holes and attach to clamps
- 8 Backfill all holes with a approx total 1.1 cubic m concrete (4 parts gravel/2 parts sand/1 part cement)
- 9 Allow concrete to set for 48 hours before first use

General Assembly Notes

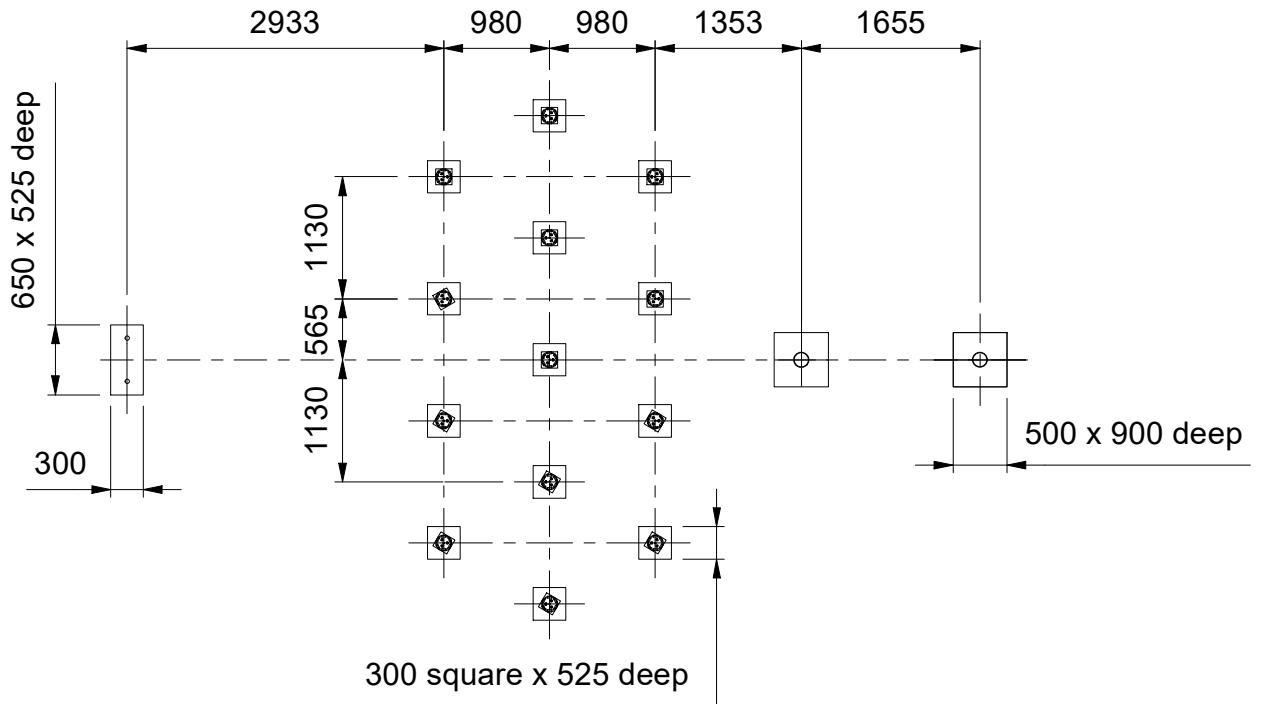
- Make sure the Nord lock washers are used on the fixings inside the spheres
- When assembling sections leave the fixings inside the spheres loose as this allows the strut extrusions movement which makes locating the opposite end easier
- Before fixing the spheres together ensure all fixings inside are tight
- Some clamps have round holes, others have flats - see following sheet for identification
- Ensure grub screws are used to secure clamps on the struts and apply loctite to screw
- Ensure plastic caps are fitted in unused holes in the spheres
- Ensure M10 x 35 socket cap head screws inside spheres and the M10 x 130 and M10 x 140 hex head bolts are all tightened to a torque of 50Nm

Note:- 1. Ensure all installation aids are removed before first use.
2. Lifting Equipment or sufficient manpower should be used throughout installation.

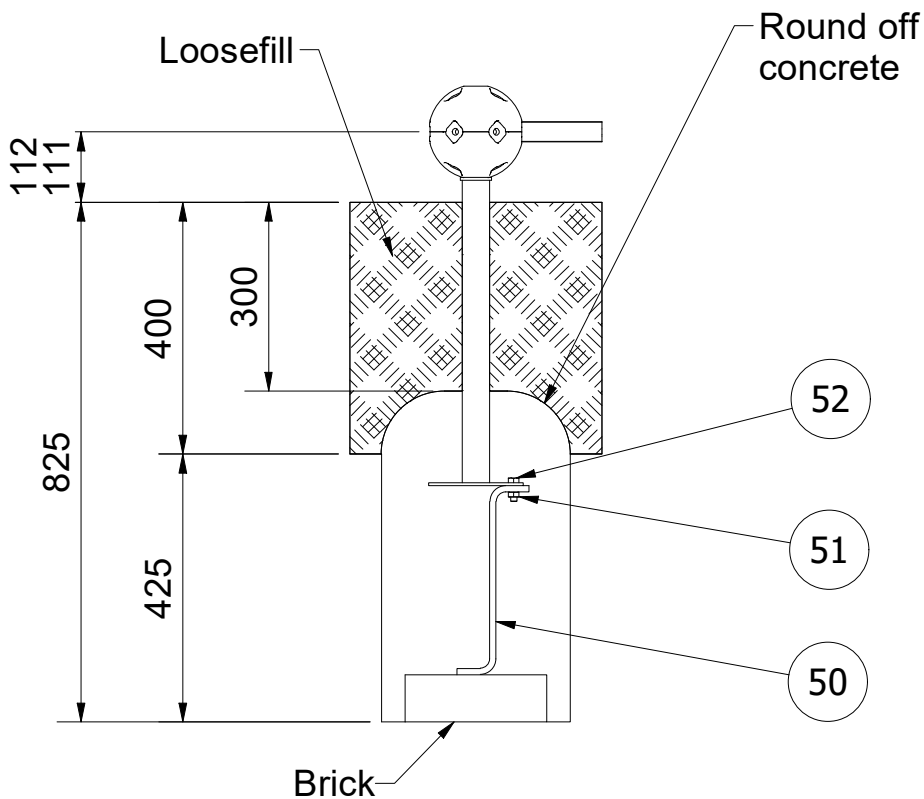
Foundation Details

Care must be taken in abnormal conditions

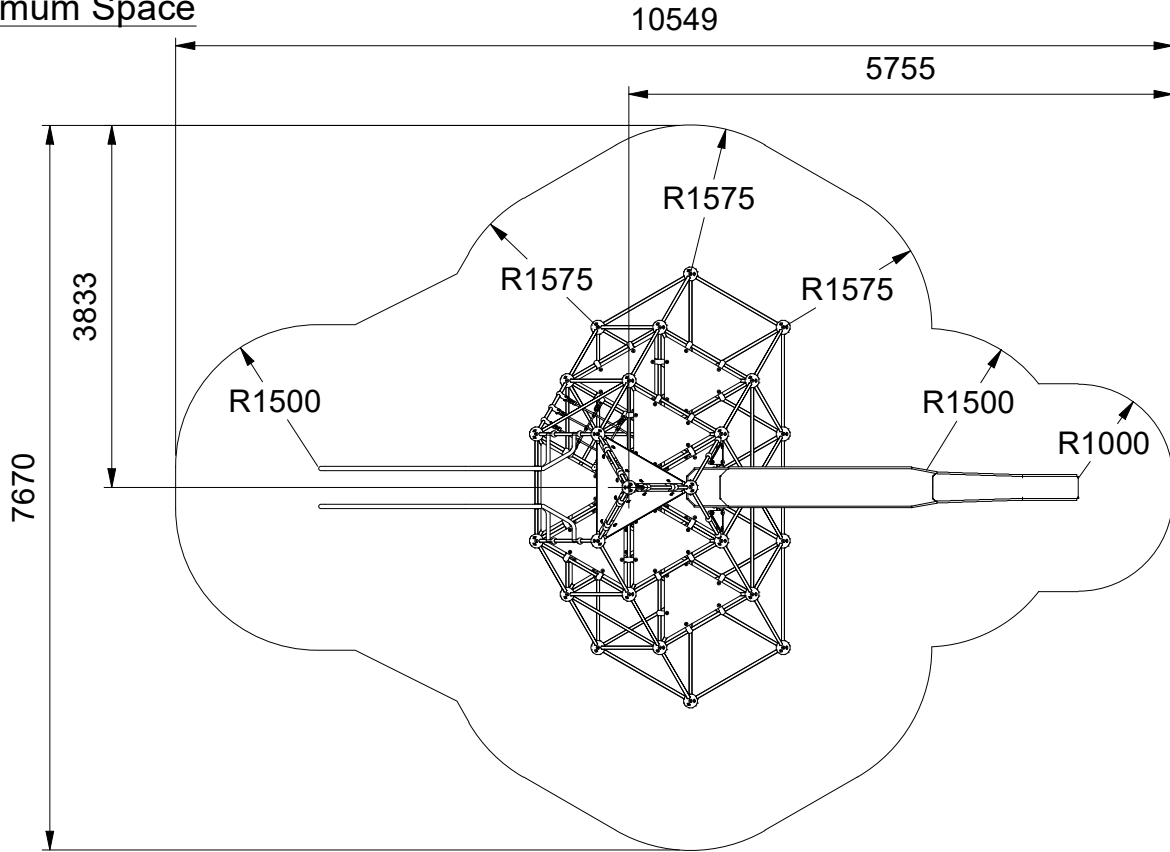
All foundation holes are 300 x 300 x 525 deep unless otherwise stated



For Bark Fix



Minimum Space



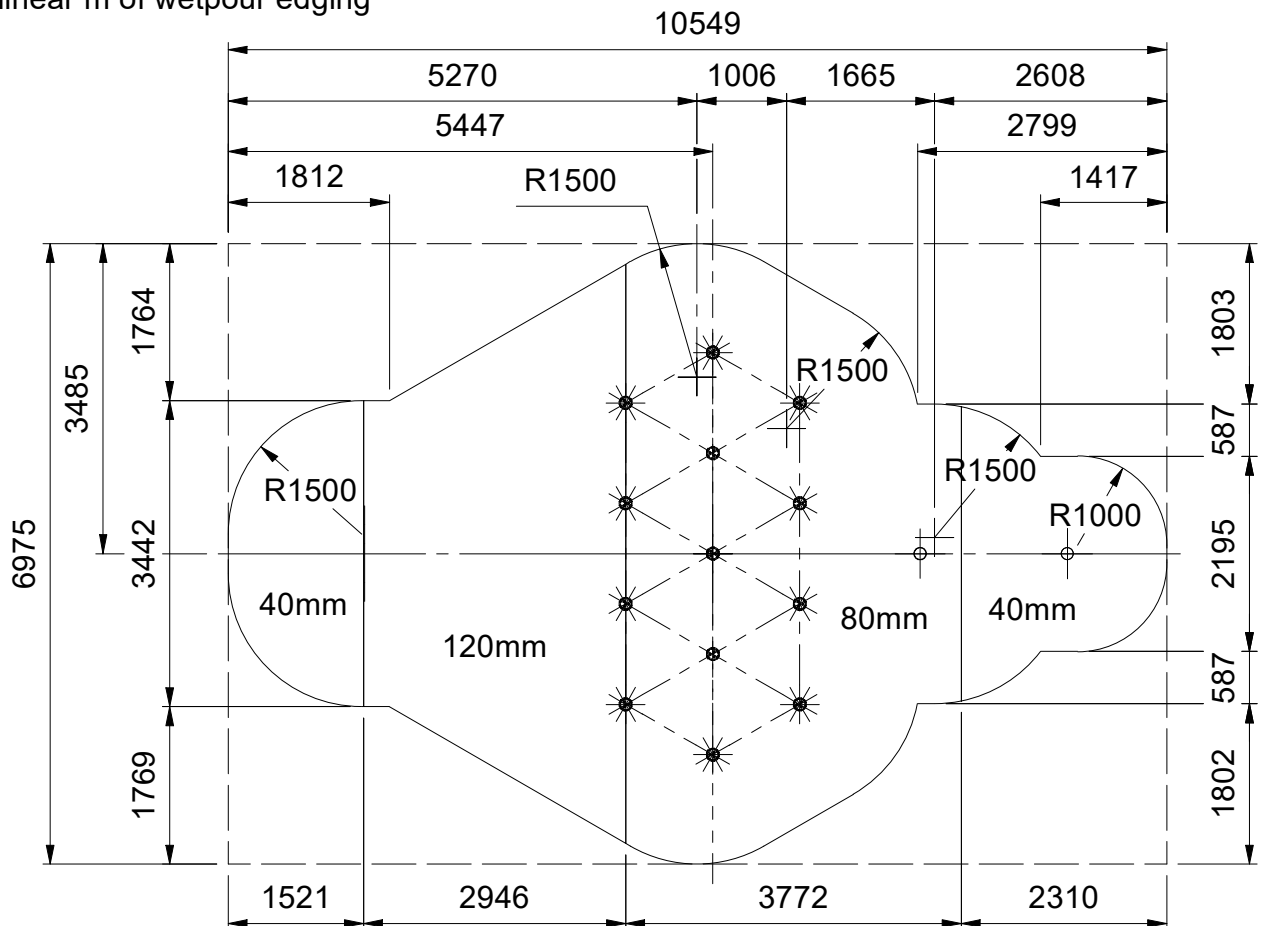
Safety surfacing is based on Wicksteed products; other suppliers systems may differ and as such adherence to the required critical fall height is required.

Safety Surfacing 14.5m² of wetpour for 2.7m FFH

22.0m² of wetpour for 2m FFH

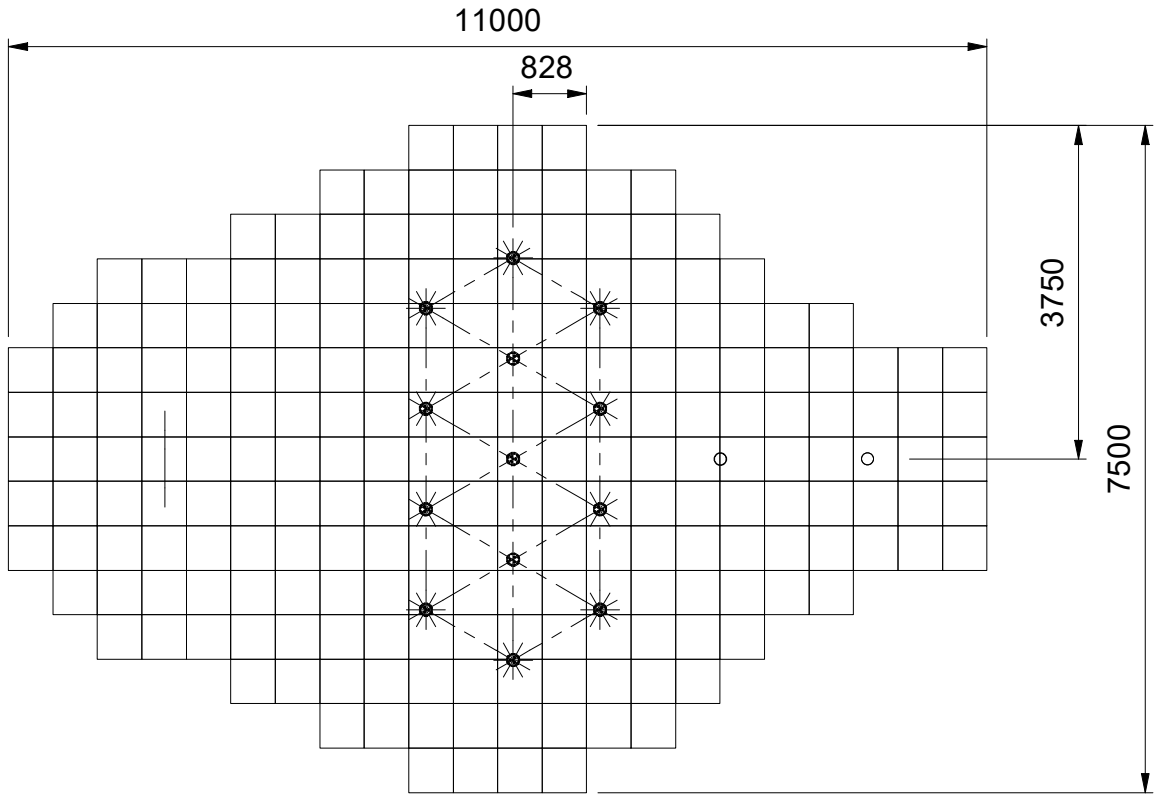
9.0m² of wetpour for 1m FFH

27.5 linear m of wetpour edging



Safety Surfacing

222 matta mats (0.5m x 0.5m)

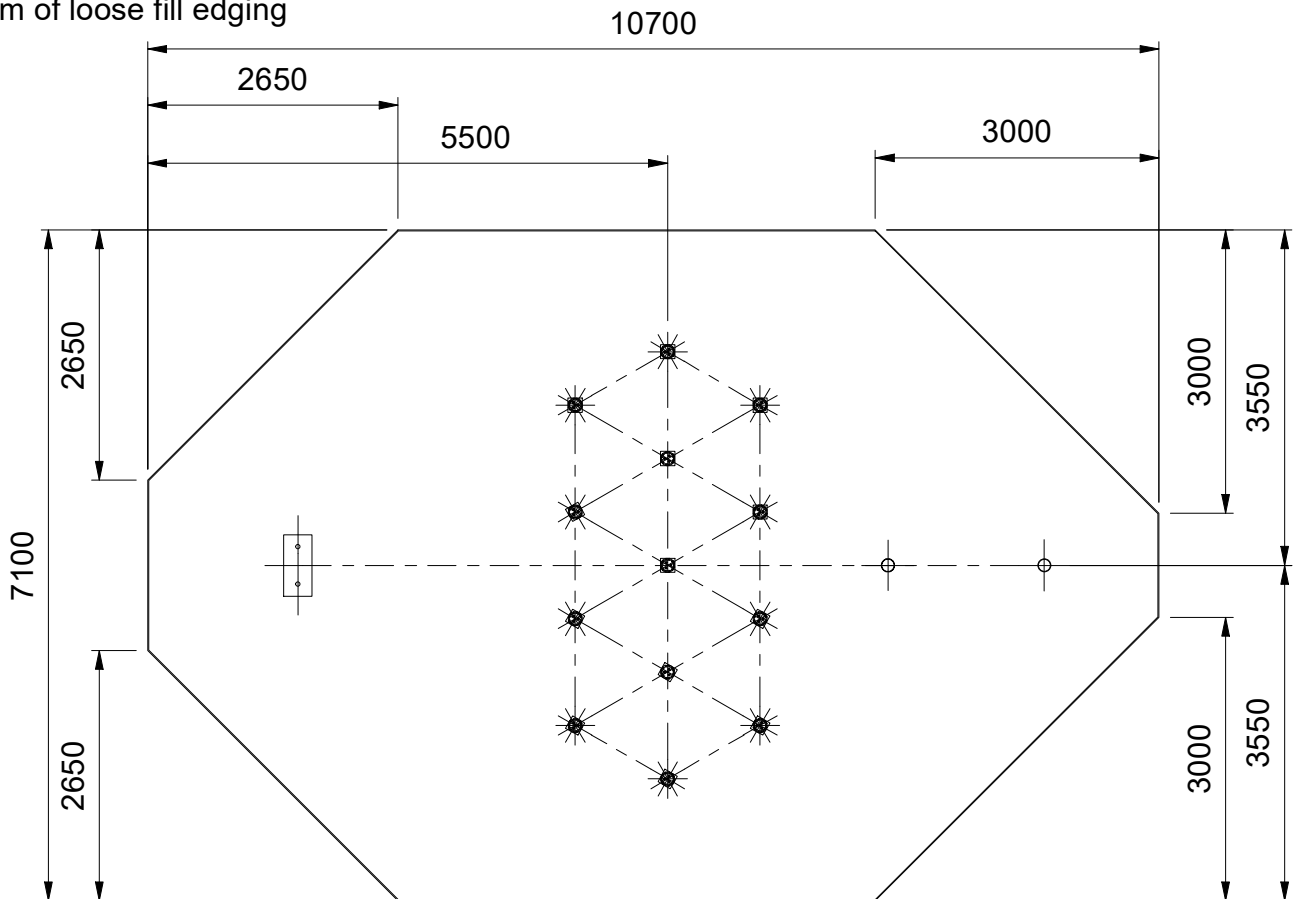


Safety surfacing is based on Wicksteed products; other suppliers systems may differ and as such adherence to the required critical fall height is required.

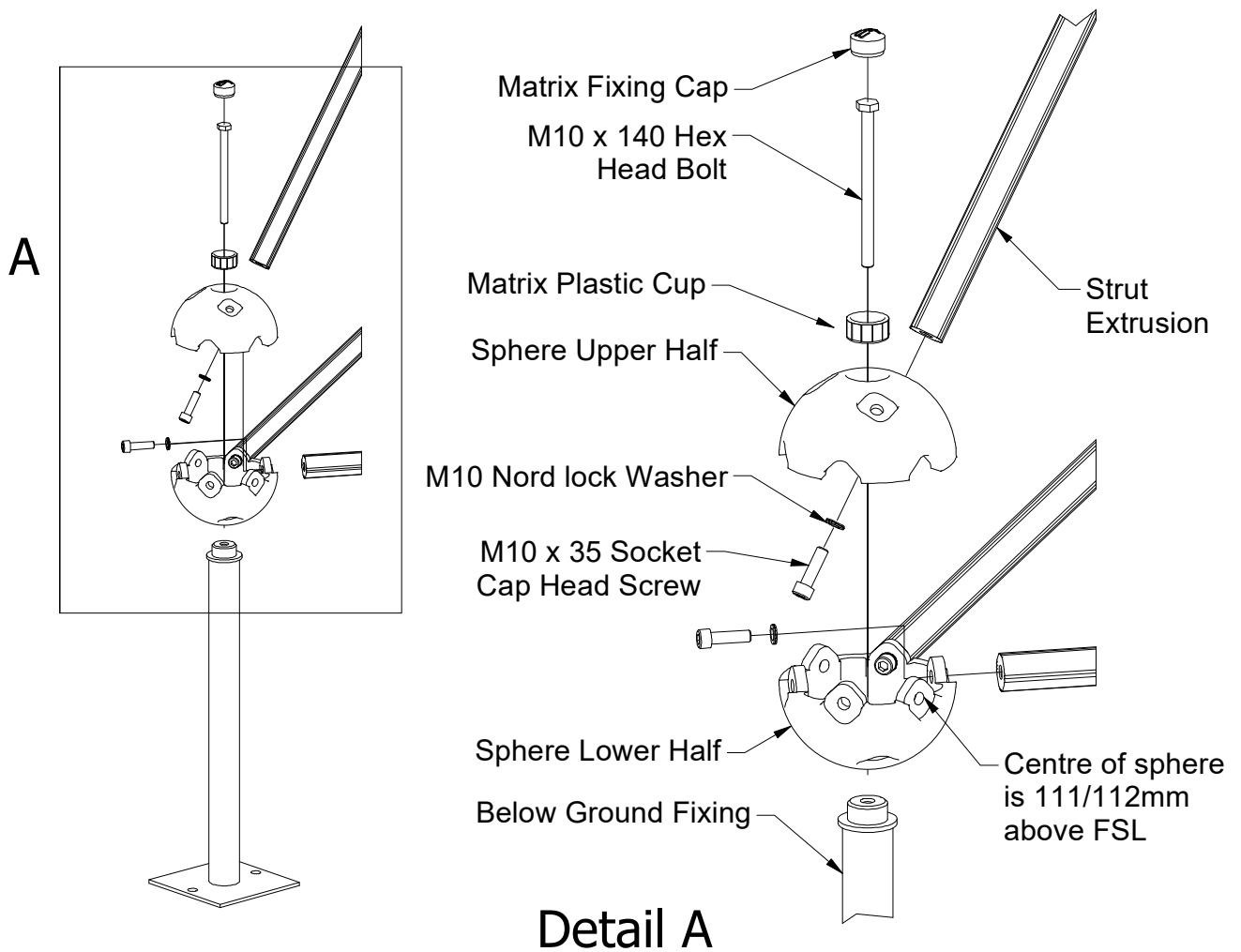
Safety Surfacing

60m² of loose fill

29m of loose fill edging



Below Ground Fixing Arrangement



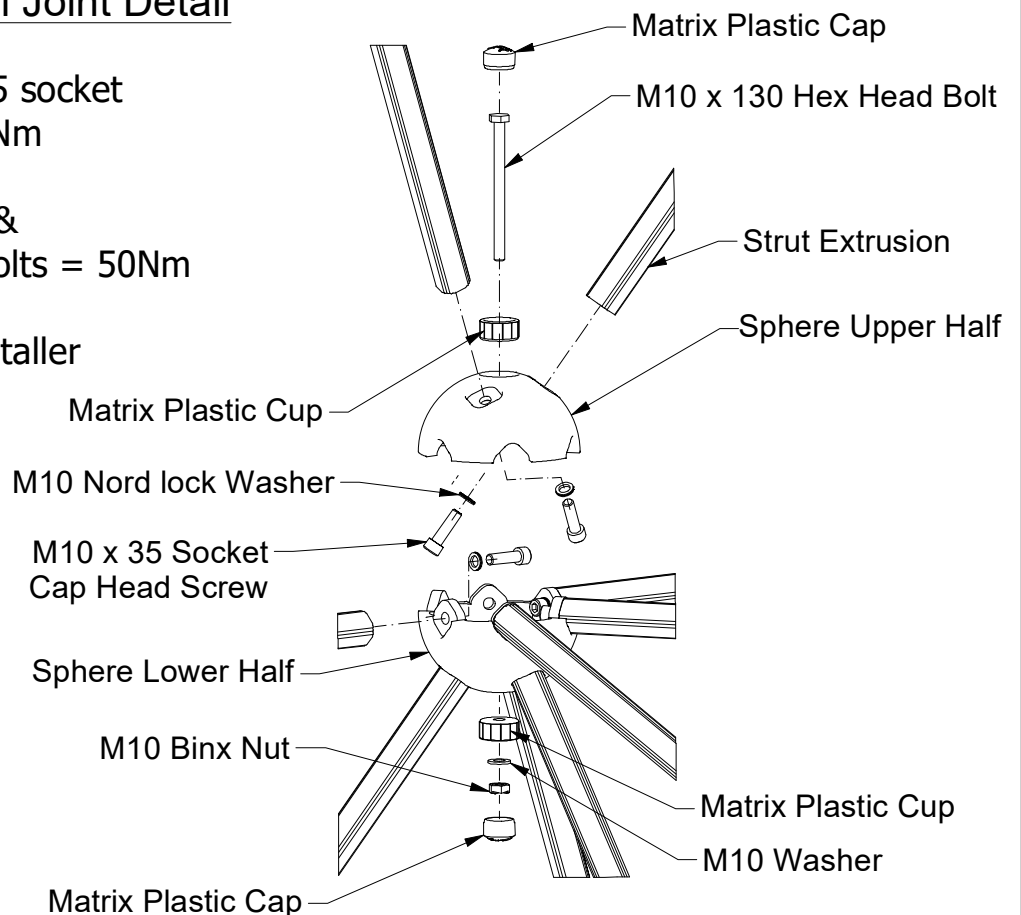
Typical Joint Detail

NOTE

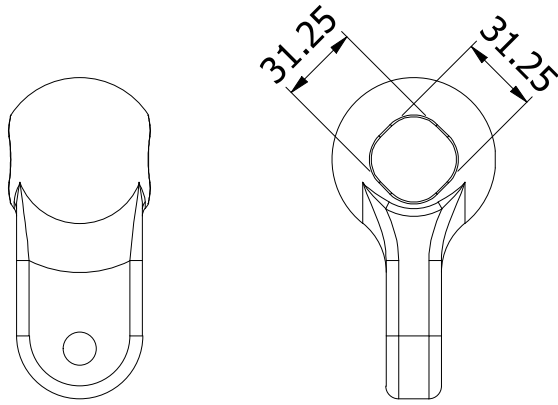
Torque for all M10 x 35 socket cap head screws = 50Nm

Torque for M10 x 130 & M10 x 140 hex head bolts = 50Nm

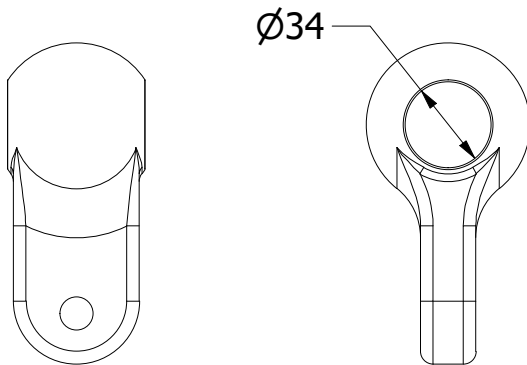
Tooling supplied by installer



Clamp Details



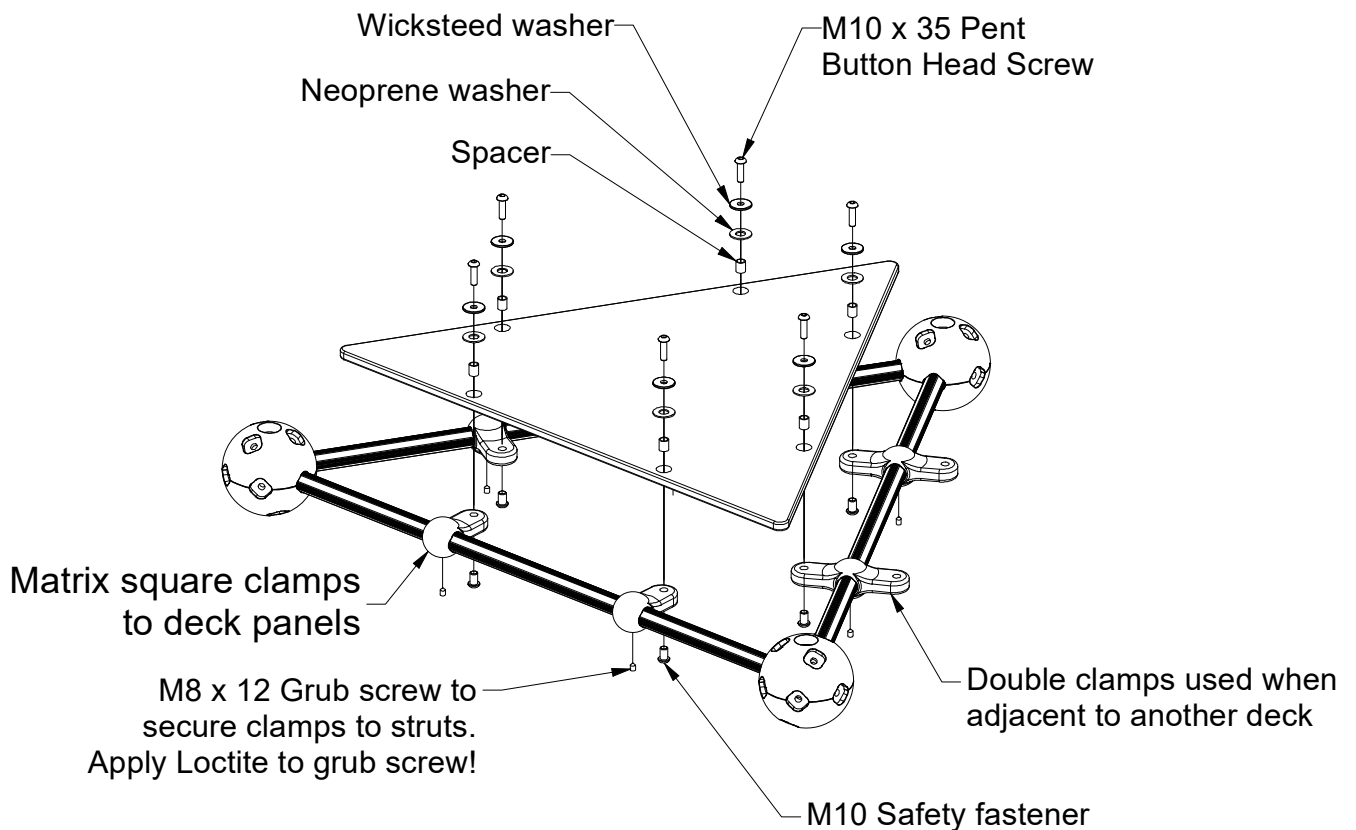
Matrix square clamp 3711-046
(3711-049 if drilled for pin)
Used for deck, sides of nets
and bannisters



Matrix circular clamp 3711-048
(3711-050 if drilled for pin)
Used for panels that fit on
the side of the Matrix unit
and across top and bottom
of nets

Typical deck assembly

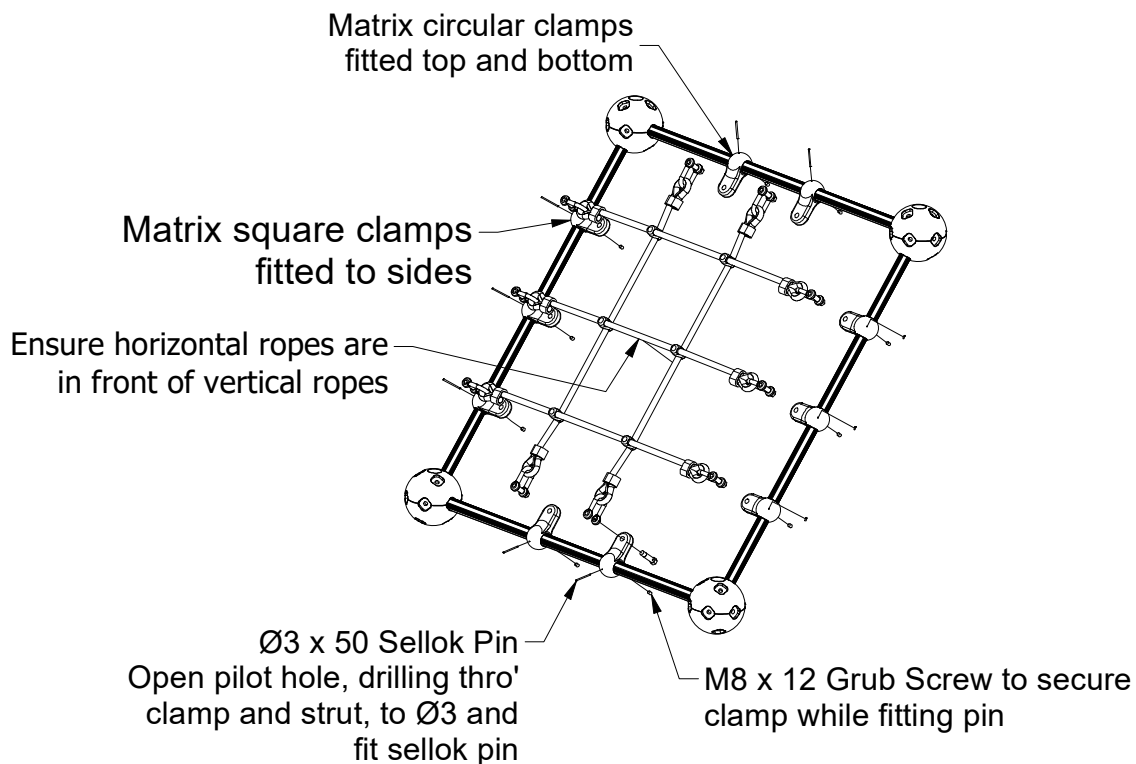
Note - Clamps are fitted *during* structure assembly



Typical climbing net assembly detail

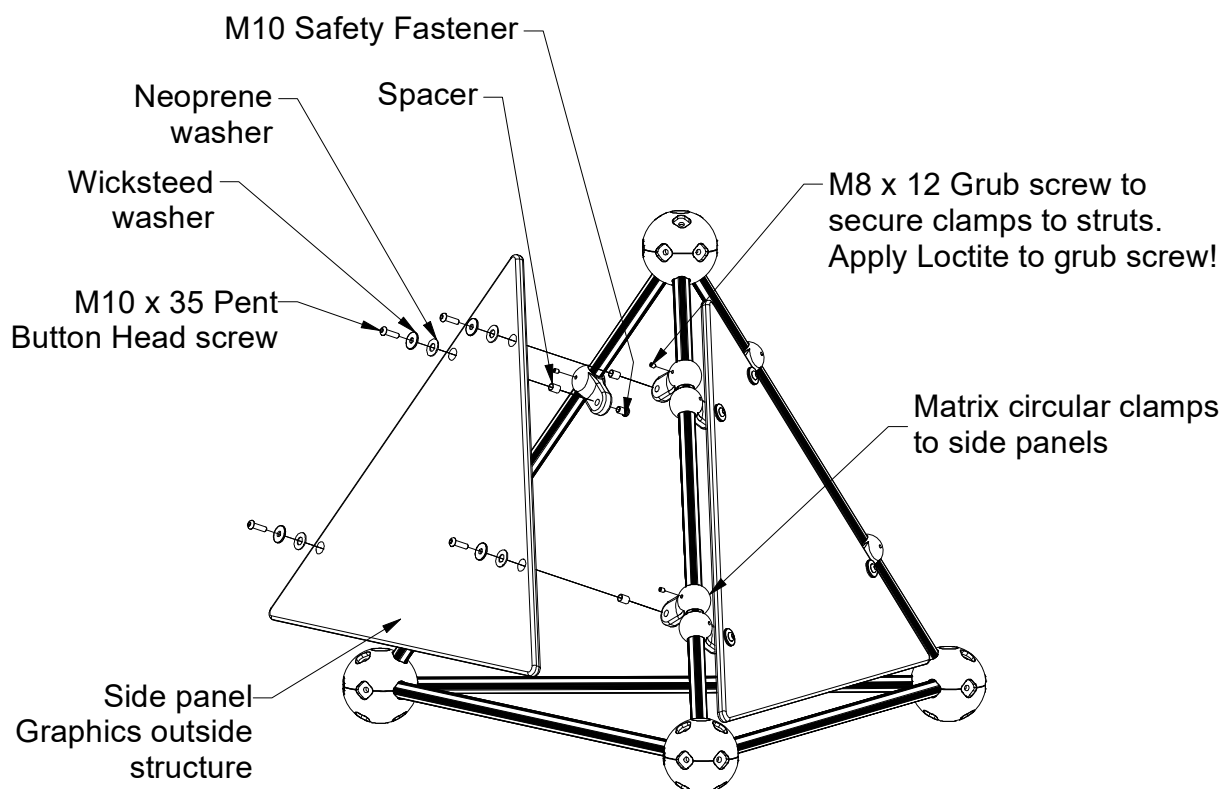
Note - Clamps are fitted **during** structure assembly

Note clamp orientation

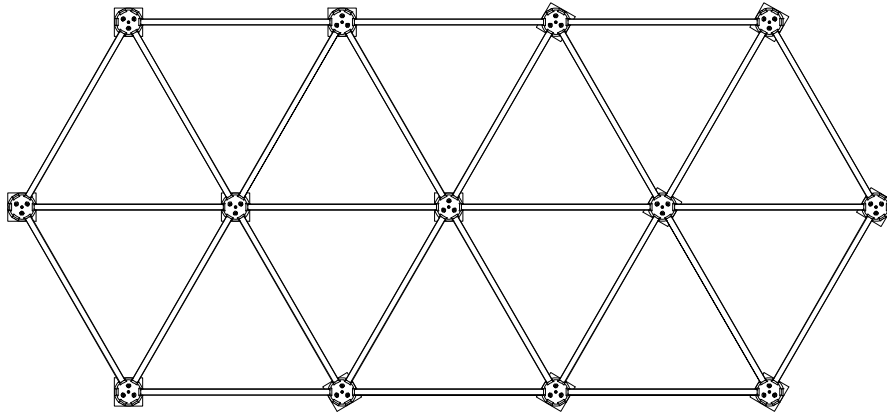


Typical Side Panel Assembly Detail

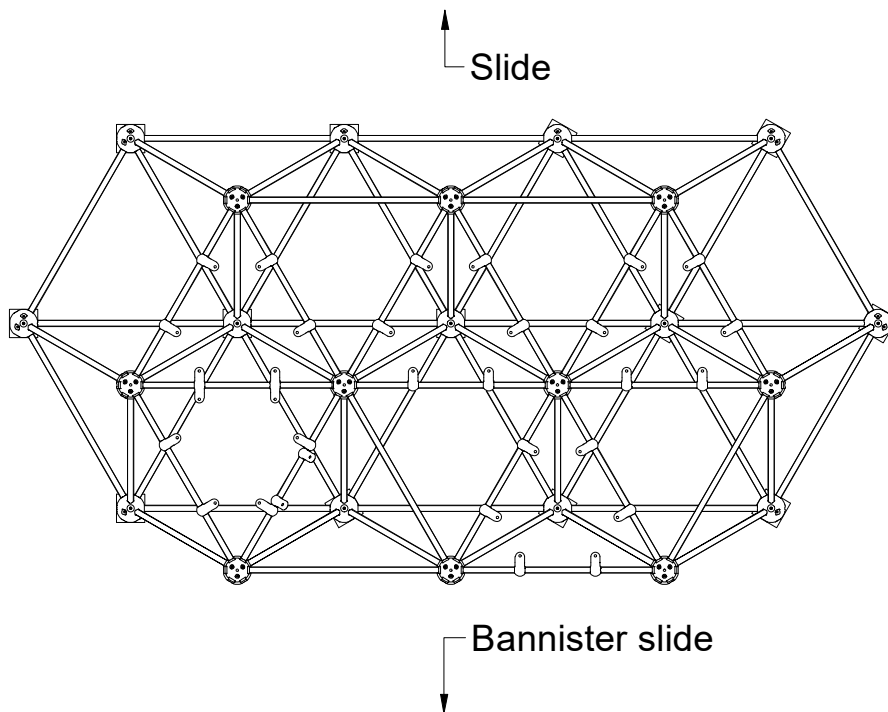
Note - Clamps are fitted **during** structure assembly



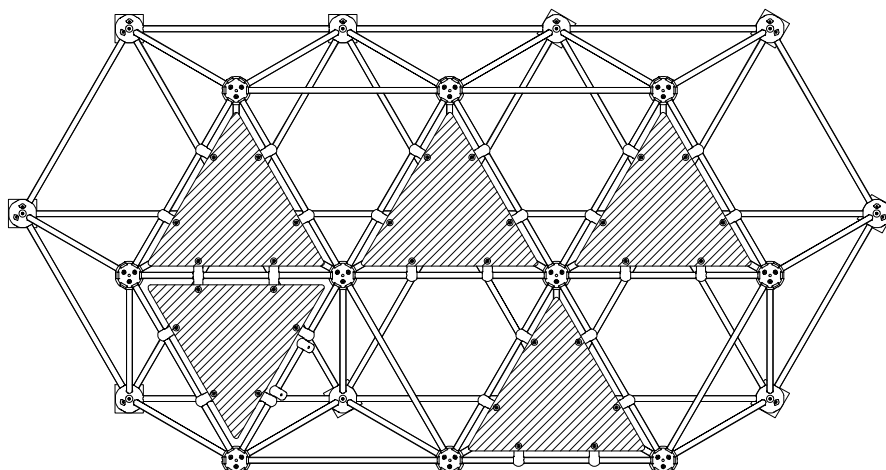
Ground level strut layout



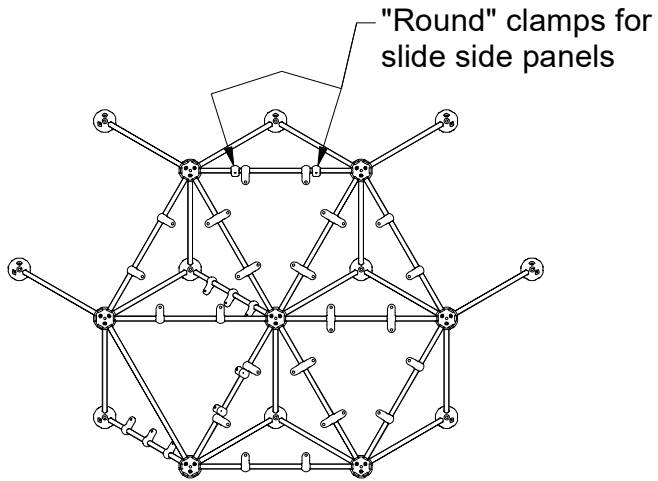
Structure assembly from ground to first horizontal level



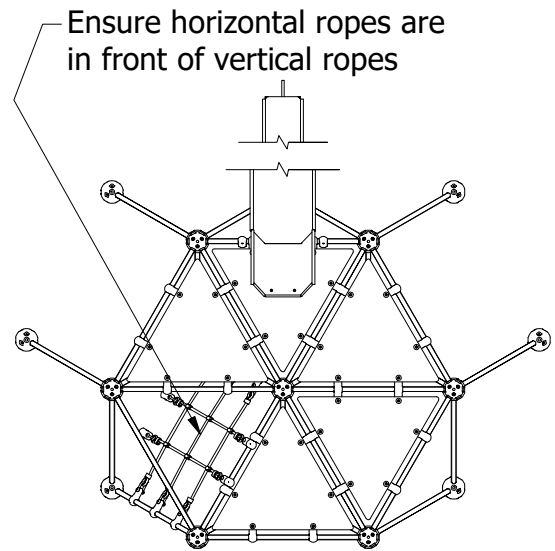
Deck positions at first horizontal level above ground



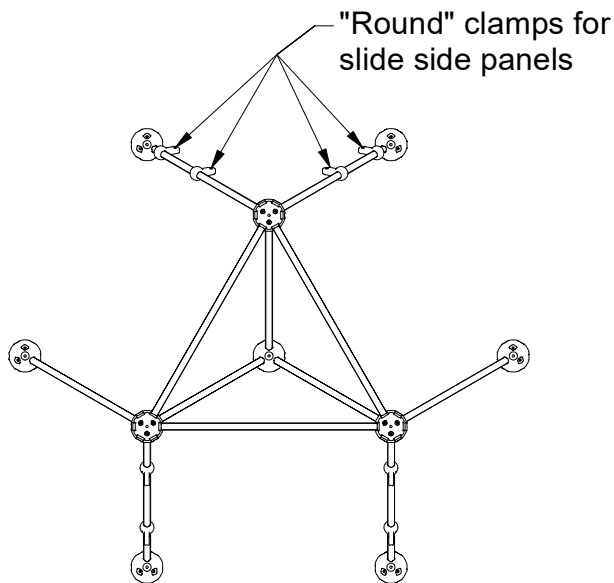
Structure assembly from first to second horizontal level



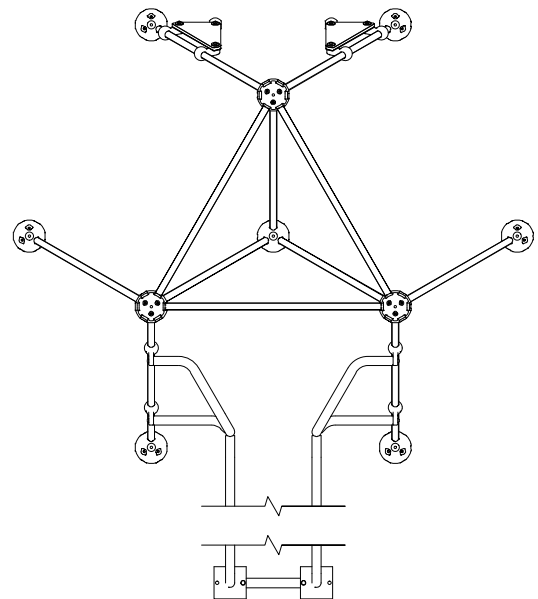
Net, decks and slide at second horizontal above ground



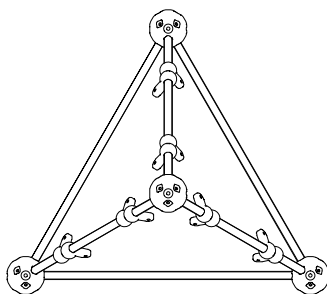
Second to third level assembly above ground level



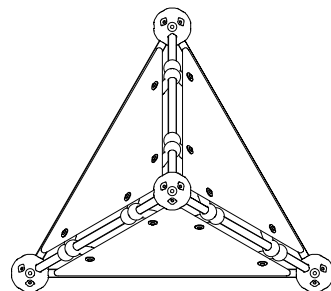
Slide side panels and bannister slide

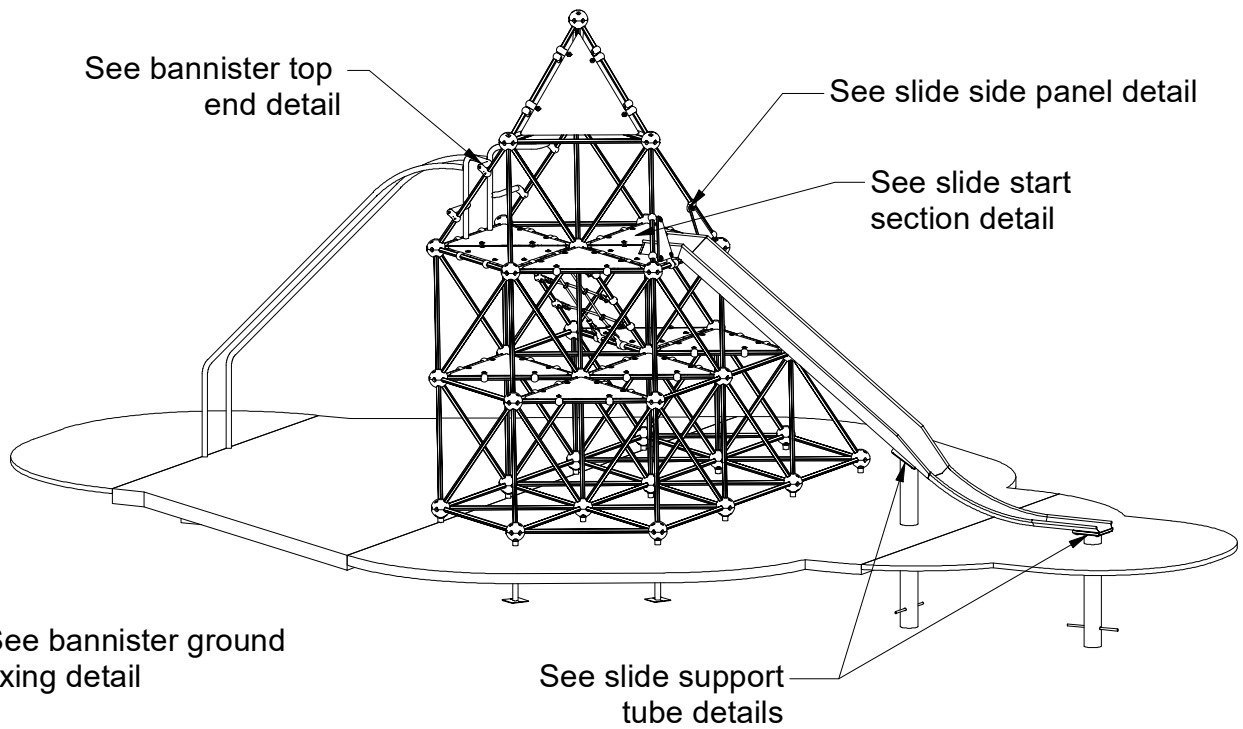


Top level clamp positions

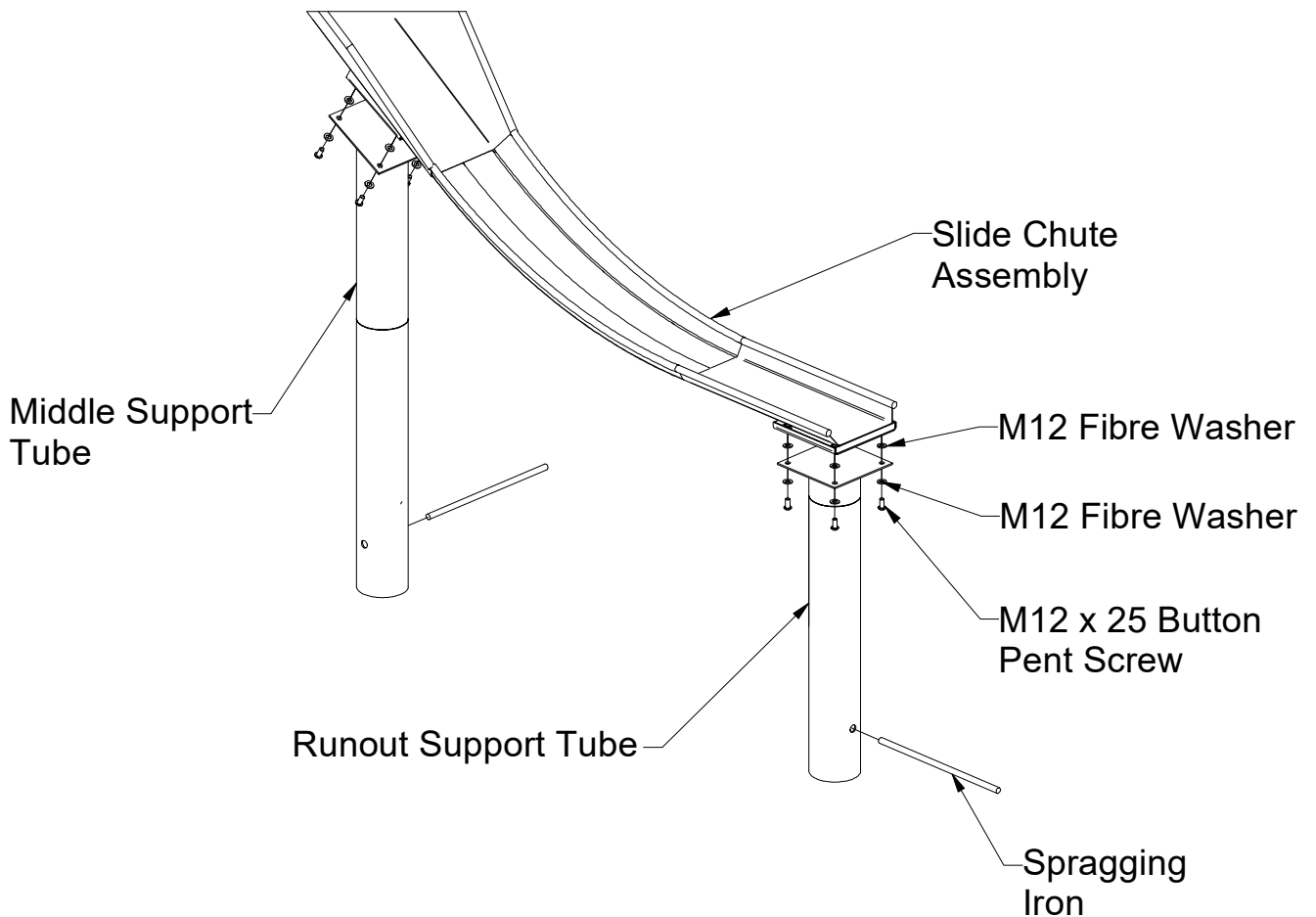


Top level panels

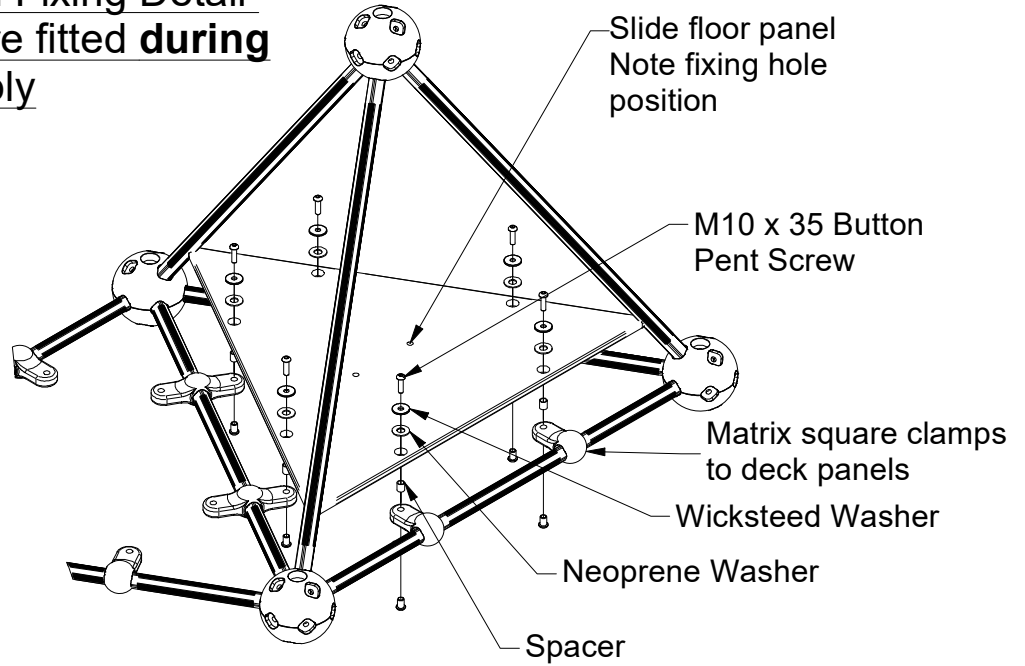




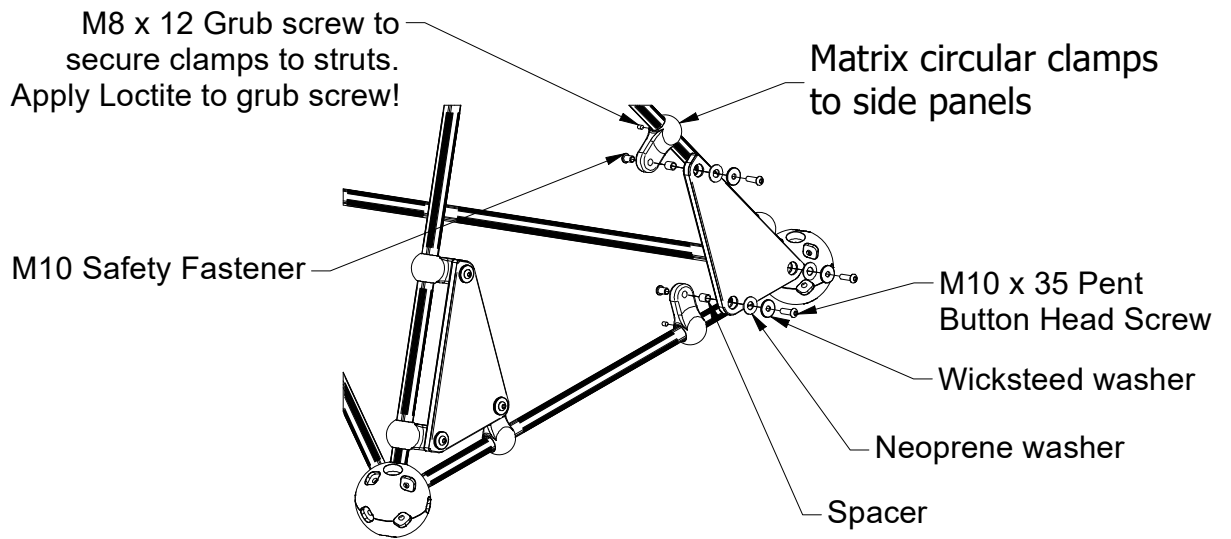
Slide Support Tube Details



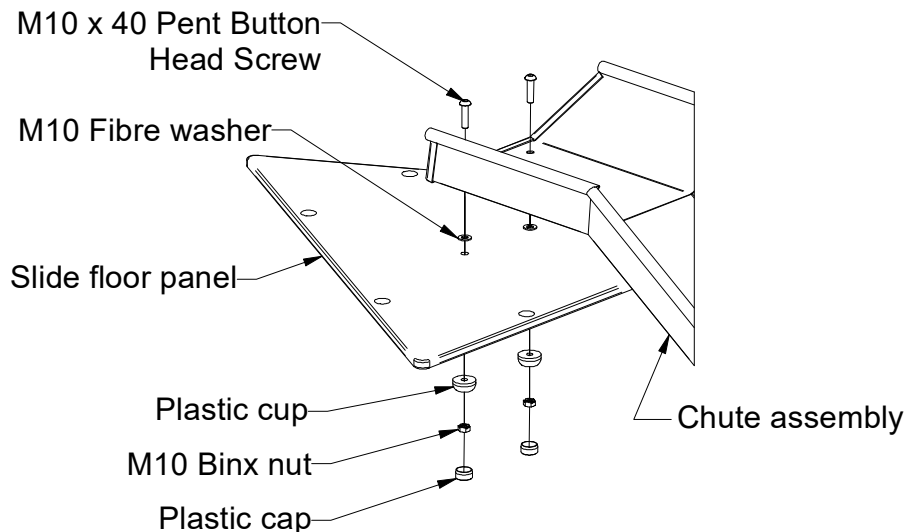
Slide Floor Panel Fixing Detail
Note - Clamps are fitted **during** structure assembly



Slide Start Side Panel Detail
Note - Clamps are fitted **during** structure assembly



Slide start section fixing detail



Ø3 x 50 Sellok Pin
Open pilot hole, drilling thro'
clamp and strut, to Ø3 and
fit sellok pin

M12 x 50 Pent
Button Head Screw

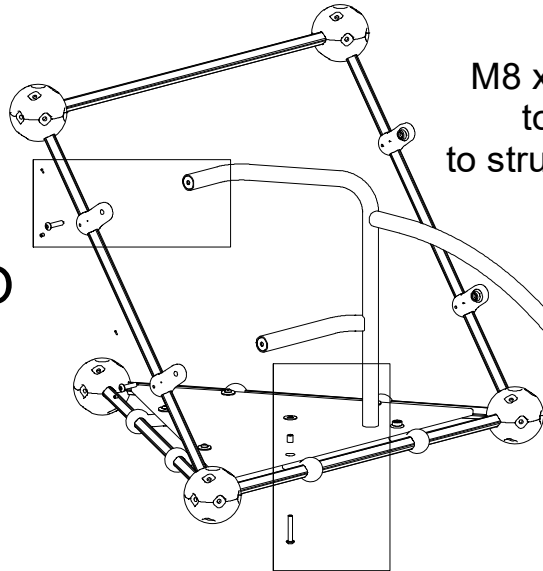
M8 x 12 Grub screw
to secure clamps
to strut. Apply Loctite
to grub screw!

Bannister frame

Detail D

Bannister fixing to side extrusion

D



C

Bannister Frame

Neoprene washer

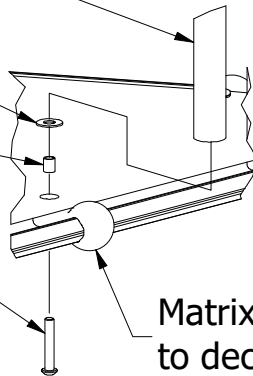
Spacer

M12 x 70 Pent
Button Head Screw

Matrix square clamps
to deck panels

Detail C

Bannister to panel fixing



Bannister leg

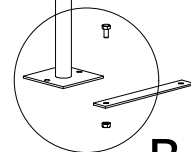
M12 x 25 Hex
Head Screw

M12 Nut

Spacing Bar

Detail B

Bannister ground fixing



B

ITEM	QTY	PART NUMBER	DESCRIPTION
1	1	5031-412	MATRIX SLIDE
2	1	4201-337	RH BANNISTER
3	1	4201-336	LH BANNISTER
4	13	4201-092	MATRIX BGF
5	1	4141-040	CLIMBING NET
6	1	4013-038	PEDESTAL SUPPORT LEG - RUNOUT
7	1	4013-037	PEDESTAL SUPPORT LEG - MIDDLE
8	3	3755-264	SIDE PANEL
9	2	3755-258	SLIDE SIDE PANEL
10	1	3755-208	SLIDE FLOOR PANEL
11	9	3755-207	FLOOR PANEL
12	55	3730-128	Matrix Fixing Cap
13	172	3730-119	Matrix Fixing Sq. Cap
14	55	3730-118	Matrix Fixing Cup
15	118	3730-100	RUNG EXTRUSION
16	4	3711-050	ROUND BALL CLAMP (PINNED)
17	10	3711-049	SINGLE BALL CLAMP (PINNED)
18	18	3711-048	ROUND BALL CLAMP
19	10	3711-047	DOUBLE BALL CLAMP
20	40	3711-046	SINGLE BALL CLAMP
21	34	3711-043	LOWER HEMISPHERE
22	34	3711-033	UPPER HEMISPHERE
23	1	3069-008	SPACING BAR
24	2	3030-009	SPRAGGING IRON
25	78	2900-041	NEOPRENE WASHER
26	2	2611-032_Cup	Blue Poepplmann Cup
27	2	2611-032_Cap	Blue Poepplmann Cap
28	16	2571-013	M12 Fibre Washer
29	2	2571-012	M10 Fibre Washer
30	78	2472-003	FIXING SPACER
31	14	2223-022	SELLOK PIN Dia 3 x 50 LG
32	76	2215-519	Wicksteed Washer
33	21	2215-508	M10 Washer
34	236	2212-212	M10 NORD LOCK WASHER
35	2	2193-007	M12 Nut
36	23	2191-010	M10 Binx Nut
37	13	2185-049	M10 x 140 HEX HEAD BOLT
38	21	2185-048	M10 x 130 Hex Head Bolt
39	76	2177-002	M10 Safety Fastener
40	4	2176-181	M12 x 70 Pent Button Head
41	4	2176-179	M12 x 50 Pent Button Head
42	8	2176-176	M12 x 25 Pent Button Head
43	2	2176-133	M10 x 40 Pent Button Head
44	76	2176-127	M10 x 35 Pent Button Head
45	2	2175-134	M12 x 25 LG HEX HD SCREW
46	82	2171-115	M8x12 Grub Screw
47	236	2171-093	M10 x 35 SKT CAP HEAD SCREW
49	1	1811-003	Tube of Loctite

* Plastic plugs are to be fitted in all unused holes in the spheres

FOR BARK FIX ADD			
ITEM	QTY	PART NUMBER	DESCRIPTION
50	15	5071-028	Z-SHAPED BELOW GROUND FIXING
51	15	2193-006	M10 Nut
52	15	2175-116	M10 x 30 LG HEX HD SCREW