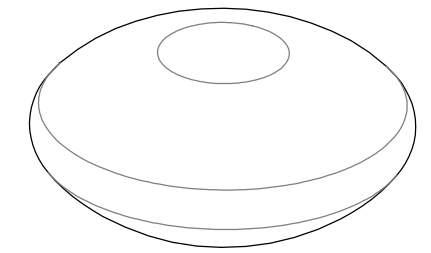


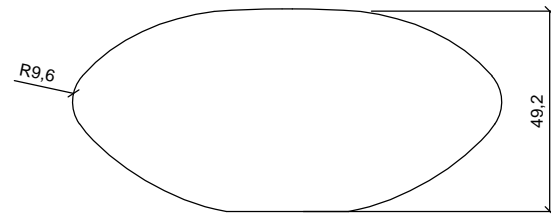
CARACTERÍSTICAS / FEATURES

Material hormigón Petra 1
Acabado decapado e hidrofugado
Dimensiones Ø88, h. 41 cm
Color ver carta de colores
Fijación mediante varilla metálica
Peso 425 Kg
Palet 200 x 200 x 60cm [4 bancos]
Peso bulto 440 Kg

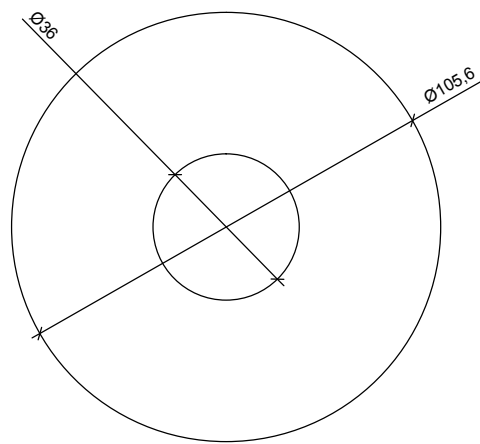
Material concrete Petra 1
Finish scaled and waterproofed
Dimensions Ø88, h. 41 cm
Colour see colour catalogue
Fixing anchored with metall rod
Weight 425 Kg
Package 200 x 200 x 60cm [4 benches]
Weight package 440 Kg



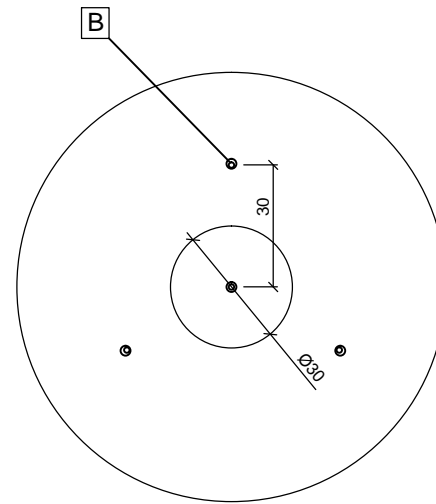
GEOMETRIA / GEOMETRY



ALZADO / FRONT VIEW

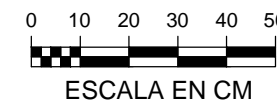


PLANTA / TOP VIEW



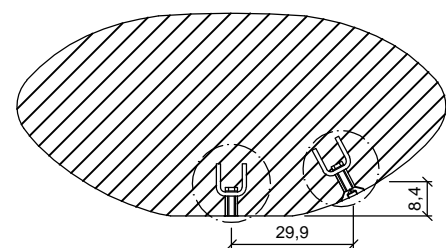
VISTA INFERIOR / BOTTOM VIEW

- A barra corrugada / corrugated rod
- B tubo M12 zincado / thread sleeve
- C varilla roscada / thread the rod
- D cáncamo / eyebolt

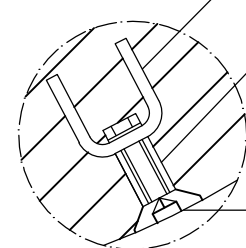


Free phone: 0808 101 1590
 email: sales@publicspaces.eu
 Web: www.publicspaces.eu

ESPECIFICACIONES / SPECIFICATIONS



SECCIÓN / SECTION

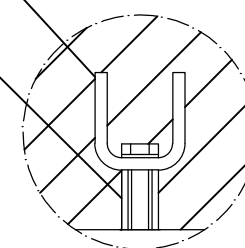


DETALLE 1 / DETAIL 1

Barra corrugada acero negro Ø10 - REA10
 Corrugated rod black steel Ø10 - REA10

Casquillo M16 - Tubo acero zincado alta precisión
 Galvanized steel threaded sleeve high precision

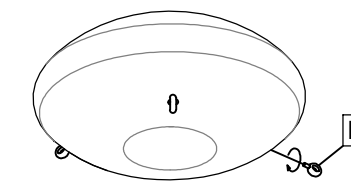
Tornillo avellanado M16
 Countersunk screw M16



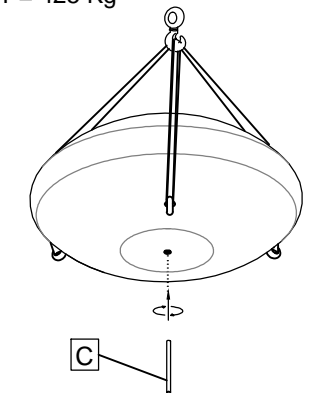
DETALLE 2 / DETAIL 2

MANIPULACIÓN E INSTALACIÓN / HANDLING AND INSTALLATION

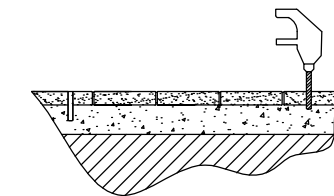
- 1 Enroscar cáncamo / Thread the eyebolt
- 2 Elevar y enroscar la varilla. Lift and threaded the rod



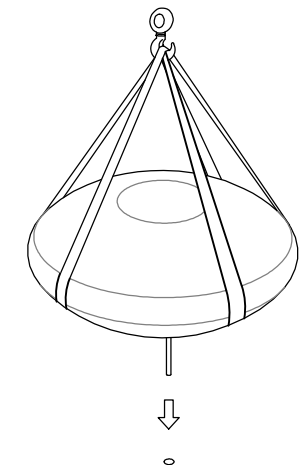
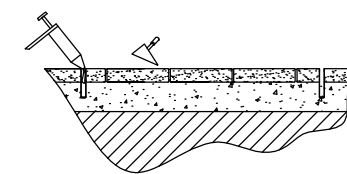
elevación / hoisting
 P= 425 Kg



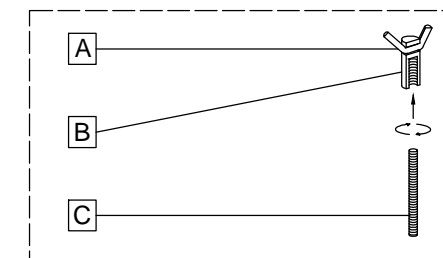
- 3 Perforar y verter resina epoxy Drill hole and pour resin epoxy



- 4 Insertar la varilla en el agujero / Insert metal rod in hole



SISTEMA DE FIJACIÓN / ANCHORAGE SYSTEM



SISTEMA DE ELEVACIÓN / ANCHORAGE SYSTEM

