


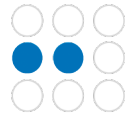
6+ **1** **1,4m**



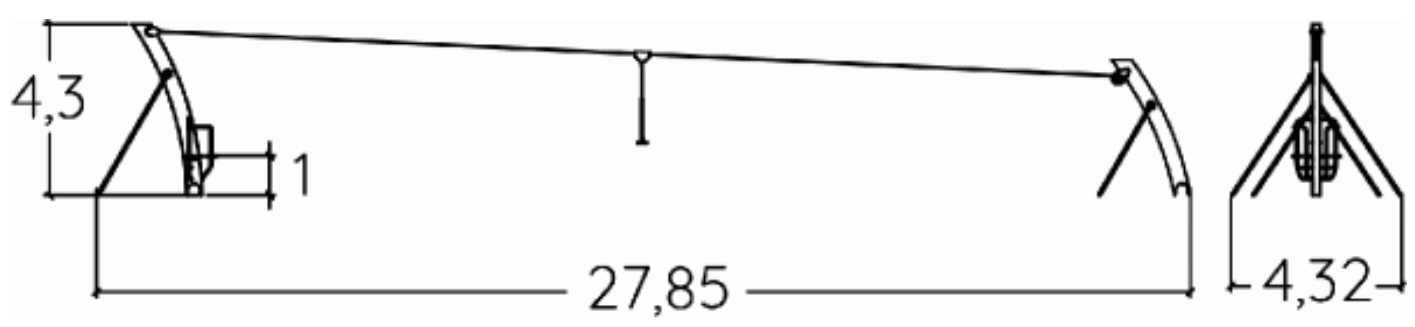
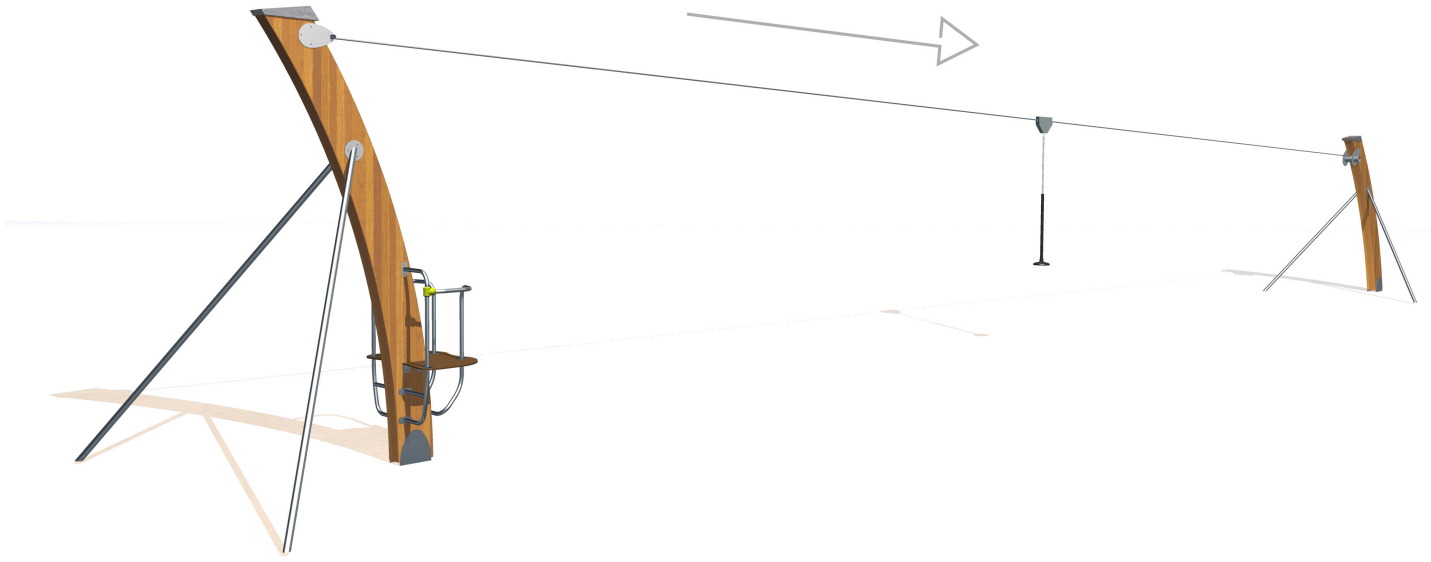
1 = 27,69m
 2 = 4,32m
 3 = 4,3m



Motor inclusion
 Sensory inclusion
 Mental inclusion



Cableway (on a level ground)



Play value : **3**

sliding



x1

meeting



x1



getting across

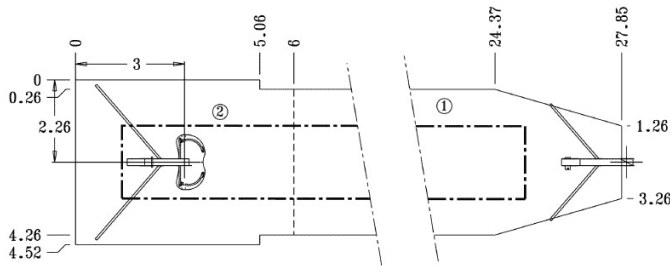


x1

Installation of equipment

IMPORTANT: It is essential to refer to the installation instructions for information on the size of the safety areas.

-  Impact area (minimum normative surface)
-  Free space



1	1m	84m ²
2	1,40m	27m ²



2

10h30

3.5m³

111m²

617kg

193kg



EN

1176