

STEPOC - THE REAL ALTERNATIVE TO SHUTTERED CONCRETE

30% cheaper than conventional shuttering.

The faster, more economical way to build walls with exceptional strength.

STEPOC's unique design enables horizontal reinforcement to be placed adjacent to either block face, or both if required, to ensure that maximum strength is achieved just where it's needed.

STEPOC is bonded with concrete, which is poured down through the inter connected cavities in all the blocks. The blocks' unique design creates a cascade or waterfall effect which ensures a smooth filling of the poured concrete, forcing out air and eliminating segregation, to create walls which have immense compressive and lateral strength.

STEPOC enables the fast construction of single skin retaining walls up to 3.8 metres high, subject to a design carried out by a structural engineer.

At less than 20kg all units are well within the HSE guidelines for a single man repetitive lift. STEPOC is proven in use on application the length and breadth of the UK.

STEPOC combines the ease of blockwork construction with the versatility on in-situ concrete, and yet is faster to apply than both, making it an ideal component for:

- Retaining walls
- Sheer wall
- Laterally-loaded panels
- Blast panels
- Bund walls
- Basement walls
- Swimming pools



...and any applications that require higher compressive or lateral loads than those achievable with standard masonry. The STEPOC system is available in three widths of 200mm, 256mm and 325mm and each comprises a range of units allowing the construction of terminal ends and corners while still achieving the correct bond.

Built dry, with no mortar joint, and requiring no special on-site skills or techniques, the blocks are laid to a running bond, using a combination of half or third and full lengths. Specific data sheets are available to illustrate the construction of ends, corners and other required details.

STEPOC SPECIFICATION

COMPOSITION AND MANUFACTURE

STEPOC blocks are manufactured to BS EN 15435 2008 using aggregates which satisfy BS EN12620 and cement to BS EN197-1.

DIMENSIONS

STEPOC blocks are available in three standard sizes:

400x200x225mm	11.11 blocks per m ²
400x256x225mm	11.11 blocks per m ²
325x325x225mm	13.67 blocks per m ²

TYPICAL UNIT WEIGHTS

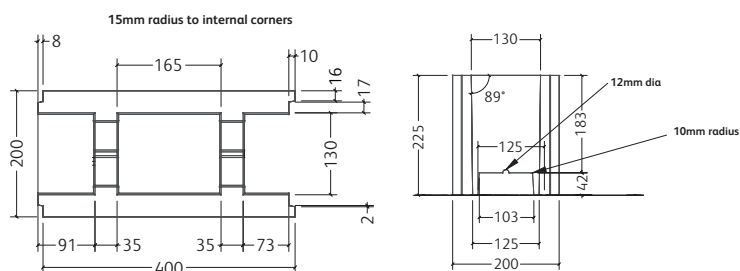
(Applies to standard units)

200mm = 17.5kg
256mm = 19.8kg
325mm = 19.4kg

DELIVERY AND OFFLOADING

STEPOC blocks are supplied on pallets for offloading by forklift truck or crane. Blocks should be stored on dry, firm, level ground with protection from rain and snow. If blocks are accidentally wetted, provision should be made for free circulation of air round the stack so that the units may dry out prior to being used.

TYPE 200



400 x 200 x 225mm standard

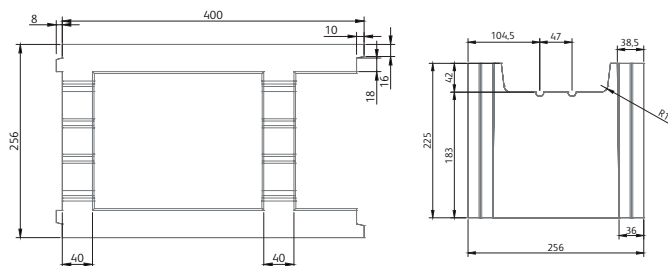
200 x 200 x 225mm 1/2 length

L2 - Full Length Standard

L3 - Full Length Plain End

L4 - Half Length Plain End

TYPE 256



400 x 256 x 225mm standard

133 x 256 x 255 1/3 length

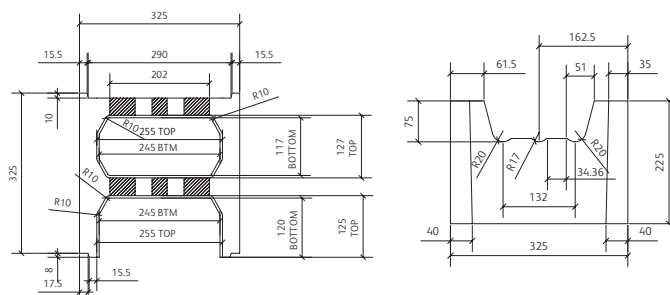
V2 - Full Length Standard

V3 - Full Length Plain End

V5 - Third Length Standard

V6 - Third Length Plain End

TYPE 325



325 x 325 x 225mm standard

162 x 325 x 225mm 1/2 length

Z2 - Full Length Standard

Z3 - Full Length Plain End

Z4 - Third Length Standard

T: 0333 234 3434

E: anderton.structural@ibstock.co.uk

W: www.ibstock.co.uk/products/retaining-walls