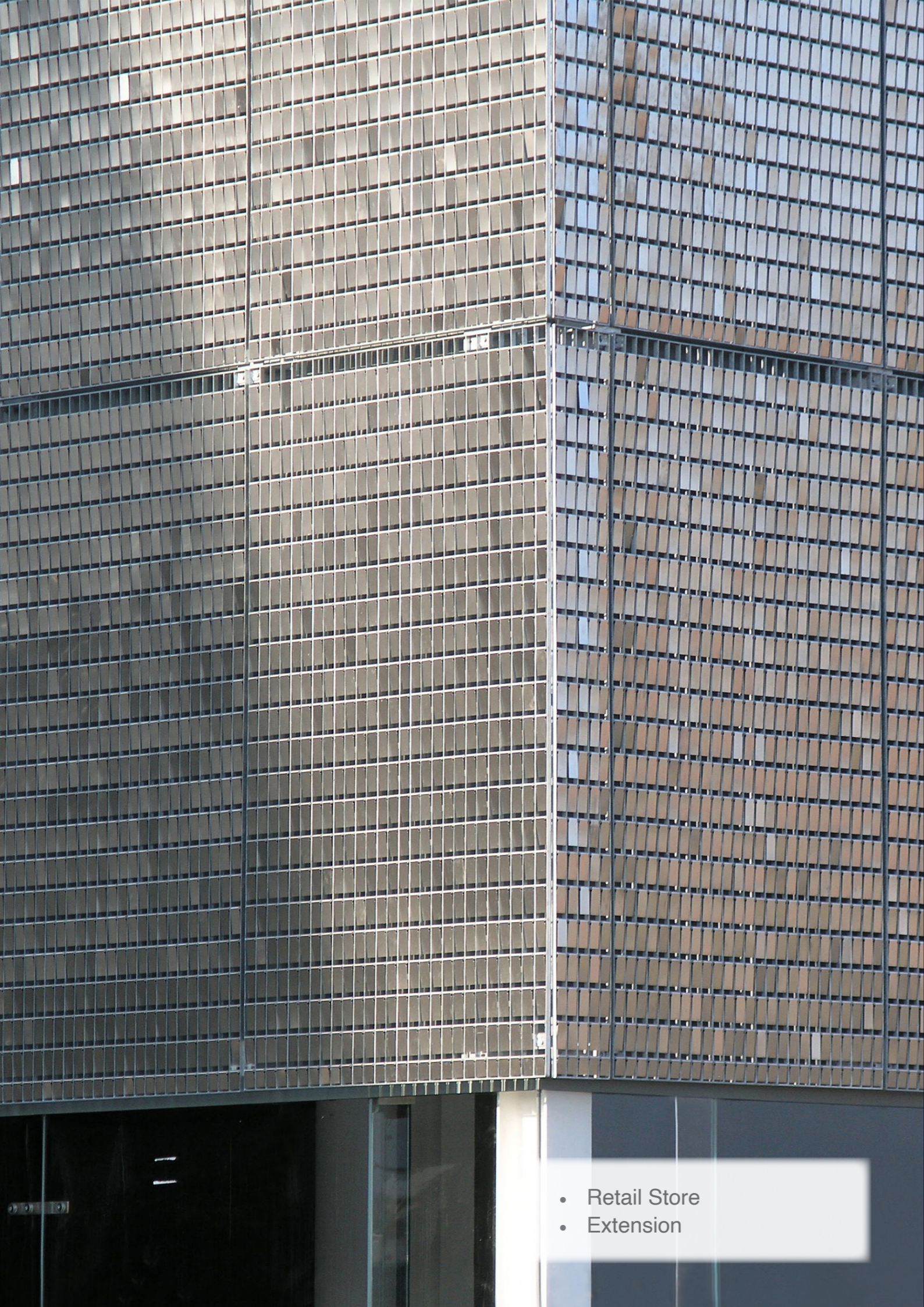


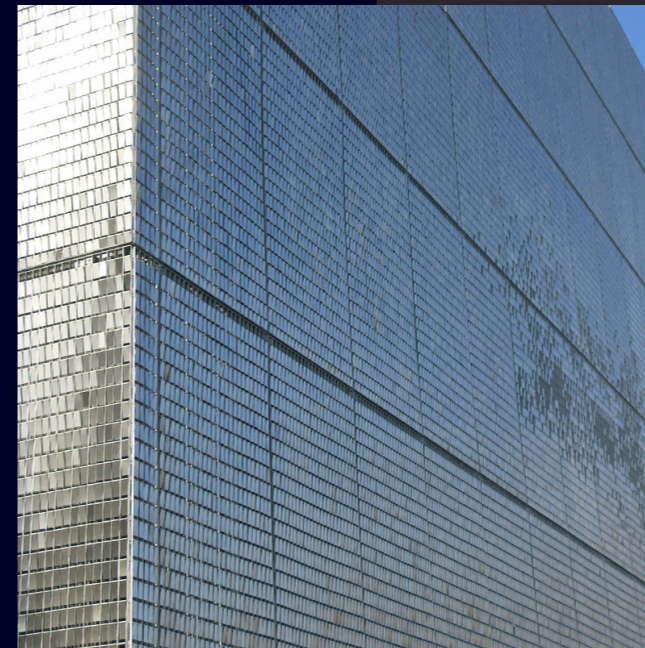


**STEREO-KINETIC® Wall  
at  
H&M Ocean Terminal**



## Ocean Terminal, Edinburgh

The frontage of H&M received a radical makeover as part of a major investment to increase footfall by enhancing the visitor experience. In addition to 70 shops, cinema, spa, gym, cafés and restaurants Ocean Terminal is home to the Royal Yacht Britannia.



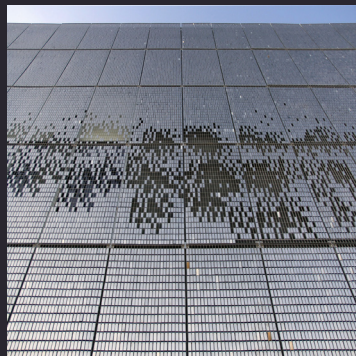
The stainless steel tiles of the STEREO-KINETIC® Wall panels were applied in a speckled pattern at second floor level to allow the passage of natural daylight through the underlying window openings.

Architects Keppie, say that the new extension, “develops a more affirmative relationship with the street, coming out from the shadows of the overhang, providing a new entrance and visual connectivity with the interior.”



The new extension has also created a high-profile enhancement to the retail space of H&M.

- Retail Store
- Extension



# LANG+FULTON

Lang & Fulton Ltd, Newbridge Industrial Estate, Newbridge, Edinburgh EH28 8PJ  
t: 0131 441 1255 sales@langandfulton.co.uk www.langandfulton.co.uk

Stockholding Depot: Cygnus Point, Black Country New Road, West Bromwich B70 0BD