

— LANG+FULTON —



STEREO-KINETIC® Wall
at
Festival Place
Basingstoke

t: 0131 441 1255

sales@langandfulton.co.uk

www.langandfulton.co.uk

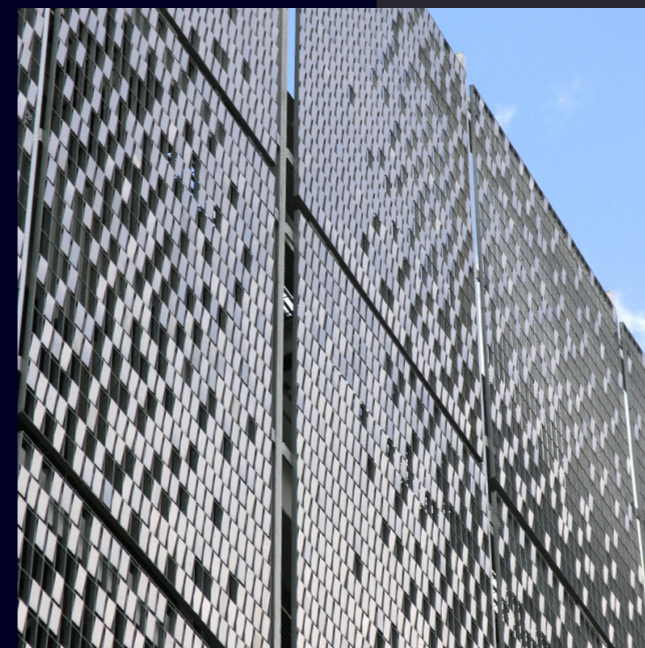


- Multi-storey Car Park
- Refurbishment

Festival Place, Basingstoke

Lang+Fulton worked with Bell Associates on the refurbishment of the 3,000 space car park, which had been built in 2002.

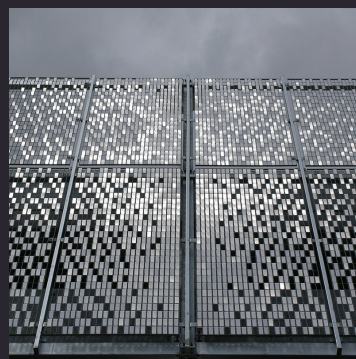
The new facade has transformed the dated appearance of the original car park and links it to a new extension with one continuous style of frontage.



The STEREO-KINETIC® Wall façade was mounted on an independent steel frame which was bolted back to the existing structural steelwork.

Detailed ventilation and glare studies were conducted to ensure that the project fully complied with regulations and site specific conditions.

The gradation of the stainless steel tiles was calculated to allow for the required level of ventilation, with large areas of open grating to allow for the very poor air flow through the building. Where the panels were mounted on the overpass, which crosses the A3010, no tiles were fixed to the bottom row of grating and the level of polishing to the tiles was reduced to minimise glare.



LANG+FULTON

Lang & Fulton Ltd, Newbridge Industrial Estate, Newbridge, Edinburgh EH28 8PJ
t: 0131 441 1255 sales@langandfulton.co.uk www.langandfulton.co.uk

Stockholding Depot: Cygnus Point, Black Country New Road, West Bromwich B70 0BD

© 2023 Lang+Fulton. All rights reserved.