

# Sonora

## Description

The Sonora's melodious bells chime out loud with 21 tubular bells made from hand tuned, heavy duty anodized aluminum.



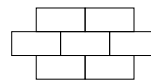
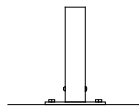
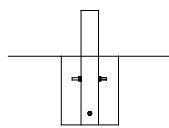
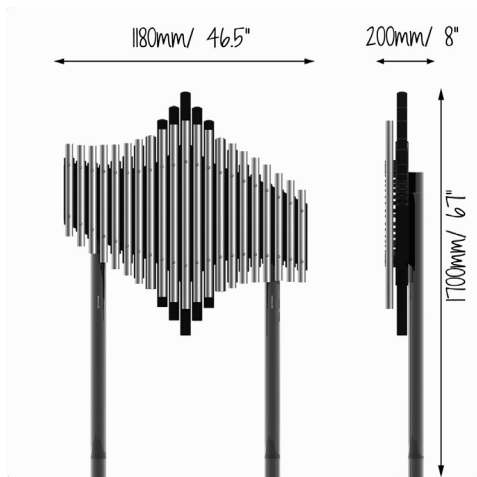
## Materials and Features

Black anodized aluminum resonators held between HDPE sheets.  
 316 mirror polished stainless steel legs.  
 21 x silver anodized aluminum notes.  
 4 x 1 part vandal resistant mallets.  
 Vandal resistant 300 series stainless steel fixings.

## Tuning and Sound Level Data

C Major Pentatonic (C4 - C6)

50m - 56dB  
 10m - 69dB  
 <3m - 92dB



Packed Dimensions	Weight (kg)	L (cm)	W (cm)	H (cm)
Instrument 1 of 2	60	140	120	20
Legs 2 of 2	18	200	10	20

\*Surface fixing instruments will include additional packages containing fixing plates.

Find more information and watch the video [here](#).

Standard Compliance BS EN 1176

Warranty: Limited Twenty-Five (25), Limited Ten (10) Year & Limited Two (2) Year warranty

SONO/Issue 002