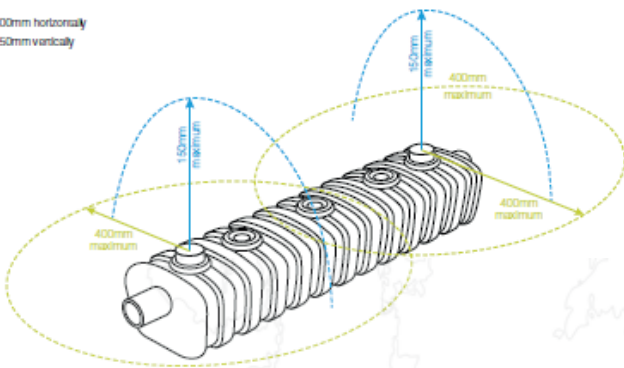


# Mona Plant System Links, Rings and Plantsava

## How It Works:

1. Mona tanks are filled with water via a filler pipe above ground
2. Tanks act as reservoirs to hold the water
3. Roots absorb water via the process of capillary action
4. A healthy rootball is established

- 400mm horizontally
- 150mm vertically



## Mona Plant System Links:

- Ideal for interior and exterior landscaping
- Flexible hose connects the tanks to achieve any configuration
- For use in curved and unusual shaped beds
- Perfect for roof garden projects
- Ideal for shallow planting

## Applications:

1. Urban environments
2. Large planters
3. Roof gardens
4. Flower beds
5. Roundabouts

Mona Plant System Links	Dimensions (cm) L x W x H	Water Holding Volume (L)
Link 3	63 x 13 x 6.5	3.3
Link 7	55 x 15 x 10	7
Link 24	90 x 20 x 15	24
Link 77	68 x 15 x 10	8.5
Flexible Connecting Pipes	90 (L)	
O-Ring	6 (Dia)	
End Stop	6 (Dia)	
Capillary Leg	7.5 - 16 (H)	
Filler Pipes	21 - 59 (H) x 3.2 (Dia) 78 (H) x 6 (Dia)	
Filler Pipe Collar	3.2 (Dia)	

**MPS Links Installation:**

1. Measure the area to be irrigated by the Mona Plant System Links
2. Dig down to a depth that allows 150mm of growing media to sit above each tank and below the plant's roots
3. Lay out the tanks and connect end to end with flexible pipes and O-Rings
4. Place an end stop on the final tank in the formation
5. Upright filler pipes should be mounted to replace a vent cap at the start of the links or a maximum interval of every fifth connected link. The filler pipe should be in contact with the base of the unit
6. Back-fill with growing media and plants as per specification. We recommend Green-tree Topsoil for this purpose
7. Fill with water until the float within the filler pipe rises to the fill level



**Mona Plant System Rings:**

Ensures quick establishment of plants and healthy root development, the system also provides a more robust solution to the watering of newly planted trees. Mona Plant System Reservoirs surround the rootball to provide a continuous source of water.

- For use in hard landscaped areas with rootball trees
- Install in large decorative planters for consistent watering
- Ideal for deep planting
- Suits interior or exterior landscaping
- Particularly suitable for the establishment of large trees

	Internal Dia (cm)	External Dia (cm)	Water Volume (L)
Ring 24	180	220	96
Ring 77	165	190	28

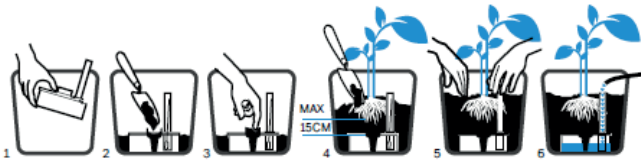
**MPS Rings Installation:**

1. Measure the dimensions of the rootball or planter and select the correct size Mona Ring. For bespoke sizes please contact the Green-tech Specifier technical team
2. Cover with growing media, ensuring there is a 150mm depth between roots/rootball and the Mona Plant System Ring
3. Ensure the upright filler pipe stands proud of the nursery line/planter
4. Back-fill with growing media and plants as per specification
5. Fill with water until the float within the filler pipe rises to the fill level

### Mona Plantsava:

By using the plants natural capillary action and allowing the plants to feed and water themselves you gain bigger, stronger and longer lasting plants. Perfect for all types of planters, both indoor and outdoor, flower beds, window boxes and hanging baskets. An environmentally-friendly product: 100% water efficient and made from recycled material in the UK.

- Interior and exterior landscaping
- Installed in patio, mezzanine and atrium displays across the UK
- Available in a variety of sizes to fit all containers and pots
- Can be planted at different depths to suit the plants' roots
- Reservoirs range from 1L to 25L



### Plantsava Installation:

1. The Plantsava system comprises of a reservoir tank, filler pipe, air cap, float and capillary leg
2. Insert the capillary leg into the central hole of the reservoir tank
3. Place the float inside the filler pipe
4. Insert the filler pipe into the secondary hole within the reservoir tank

5. Fill the capillary leg(s) with a small amount of growing media. We recommend Green-tree Topsoil

6. Insert the assembled Plantsava into the planter, ensuring the top of the filler pipe is level with the top of the planter

7. Fill with growing media and plant your choice of plants, ensure the depth between the plants roots and the top of the reservoir is no more than 150mm

	Filler Pipe Length (cm)	Dimensions (cm) L x W x H	Water Holding Volume (L)	Suitable for Planter Size (L)
MPS Tank 1	21	15 W x 6.5 H	1	2.5 - 8
MPS Tank 2	33.5	21 W x 6.5 H	2	5 - 16
MPS Tank 3	33.5	63 L x 13 W x 6.5 H	3.3	8 - 30
MPS Tank 4	46	24 W x 10 H	4	15 - 40
MPS Tank 6	59	24 W x 15 H	6	20 - 60
MPS Tank 7	59	55 L x 15 W x 10 H	7	20 - 60
MPS Tank 10	59	39 W x 10 H	10	30 - 100
MPS Tank 24	59	90 L x 20 W x 15 H	24	50 - 250
MPS Tank 25	59	42 L x 42 W x 21 H	25	75 - 250