

STREETLIFE®

ROUGH
Benches

STREETLIFE BV

Head Office

Herengracht 36
2312 LD Leiden
The Netherlands
T +31 (0)71 333 33 33
streetlife@streetlife.com
www.streetlife.com

STREETLIFE Europe

UK +44 (0)20 30 20 1509
enquiriesUK@streetlife.com
DE +49 (0)211 545 71 343
Auskunft@streetlife.com
FR +33 (0) 1 83 71 01 71
demandes@streetlife.com

STREETLIFE Scandinavia

Malmö, Sweden
T +46 (0)41 677 50 53
scandinavia@streetlife.com

STREETLIFE USA Inc

Philadelphia, PA
T 001 215 247 0148
usa@streetlife.com
STREETLIFE CANADA
T 001 484 496 8281 (EN)
T 001 438 228 1339 (FR)
canada@streetlife.com

STREETLIFE Australia Ltd

Sydney
T 0061 2 7908 6513
australia@streetlife.com
STREETLIFE NEW ZEALAND
newzealand@streetlife.com

More information is available on our website:

www.streetlife.com

- the complete Streetlife Collection
- online catalogue (PDF): available in Nederlands, English, Deutsch & Français
- recent projects and product photos
- the Streetlife team

Follow STREETLIFE BV on   



Rough Benches by Streetlife

Streetlife is a design-driven company with a passion for creating innovative design elements for public spaces. We create products that are natural in style and use the landscape as our starting point.

The overall Collection has a timeless, natural quality and is of a high standard, both aesthetically and technically. We not only strive to reduce the amount of maintenance required by selecting the right design and materials but also aim to extend the lifespan of our products. We use simple but elegant modular building blocks with long lifespans and choose materials sourced fairly and responsibly to minimise the impact on the environment.

Moreover, our design team develops ingenious solutions to improve the longevity of Streetlife products. At the same time, we are also increasingly focusing on recycled materials and the preservation of components and raw materials in the chain. All these conscious design decisions make a significant contribution to product sustainability and quality.

The Rough Benches brochure focusses on the three families within our Collection with the largest beam sizes: the Drifter Range, the Heavy-Heavy Range and the Rough&Ready Range.

We happily challenge landscape architects to get in touch.

Team Streetlife

Index

- Drifter Benches
- Drifter Structures
- Drifter Picnic Sets & Loungers
- Drifter Top Seats & Tree Isles
- Heavy-Heavy Benches
- Heavy-Heavy Industry Benches
- Heavy-Heavy Block Seats
- Heavy-Heavy Loungers
- R&R Crosswise & Curved Benches
- R&R Circular Benches

New Products Booklet

- R&R Benches & Picnic Sets
- R&R Carré Benches & Cubes
- R&R Loungers & Block Seats
- R&R Seat Walls & Top Seats
- R&R Green Screen System
- R&R Big Green Benches
- R&R Hug a Tubs
- R&R Tree Isles
- R&R Shades
- R&R Country Bridges

photo left: An extremely long **Rough&Ready Curved Top Seats** of 170 meters in the material 'All Black' is placed on top of a concrete base at the waterfront of Jönköping in Sweden. All Black consists of industrial and household waste plastic. The material is essentially composed of two thermoplastics: PE and PP. All Black has a matt appearance and a rough texture and is black throughout due to the use of a natural dye (carbon).

Drifter Benches



IJmuiden (NL)



Drifter Bench in upcycled wood



Drifter Bench in upcycled wood



Drifter Bench in Lava Grey + USB power charger



Drifter Bench in Lava Grey



Drifter Bench in upcycled wood + USB power charger



Leiden (NL)



The Hague (NL)



Boston (USA)

EN

Drifter Structures are the perfect eye-catcher for redeveloped industrial estates and port areas. The Drifter Range uses Upcycled Hardwood, Core Hardwood or Upcycled Douglas beams of approximately 30x30 cm - 12"x12". The antique wood shows irregularities and scars. Anthracite grey Lava Grey beams, a wood-free alternative, are made from recycled household plastic and possess a rough surface structure. These beams can be used to create magnificent seating and bleachers.

FR

Une Structure Drifter est un bon moyen d'attirer l'attention sur le réaménagement des complexes industriels et des zones portuaires. Dans la gamme Drifter, Streetlife utilise des pieux d'amarrage upcyclés, du bois de cœur ou Douglas upcyclé de section d'environ 30x30 cm. Le bois réemployé peut présenter des irrégularités et des défauts. Les poutres gris anthracite en Lava Grey sont une alternative sans bois fabriquées à partir de déchets plastiques ménagers. Elles présentent une surface brute et permettent de créer de superbes assises et podiums.

DE

Eine Drifter-Struktur ist ein imposanter Blickfang für ehemalige Industriekomplexe und umgenutzte Hafensareale. Für die Produktreihe Drifter werden Balken aus recyceltem Hartholz, Hartholzkern oder Douglasie mit einem Balkenquerschnitt von 30 x 30 cm verwendet. Das Holz weist viele Unregelmäßigkeiten und Gebrauchsspuren auf. Mit diesen Balken lassen sich verschiedene Sitz- und Tribünen-Konfigurationen zusammensetzen. Eine holzfreie Alternative (aus recyceltem Haushaltsplastik) bilden die anthrazitgrauen Lava-Grey-Balken mit rauer Oberflächenbeschaffenheit.

NL

Voor herontwikkeling van industriële complexen en havengebieden is een Drifter Structure een passende blikvanger. De Drifter Range maakt gebruik van balken van geupcycled hardhout, kernhout en geupcycled Douglas van ca. 30x30 cm. In het antieke hout zitten tal van onregelmatigheden en littekens. Met deze balken zijn magnifieke zit- en tribune-opstellingen te creëren. Antracietgrijze Lava Grey-balken zijn een houtvrij alternatief, gemaakt van gerecycled huishoudelijk plastic met een ruwe oppervlaktestructuur.



Small Drifter Structure in upcycled wood



Small Drifter Structure in Lava Grey



Large Drifter Structure in upcycled wood



Chicago (USA)

Drifter Structures



Manchester (UK)

Drifter Picnic Sets & Loungers



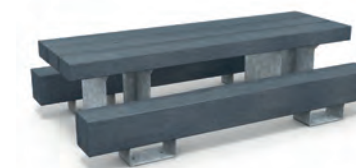
Chicago (USA)



Drifter Lounger in Lava Grey recyclate



Drifter Lounger in upcycled wood



Drifter Picnic Set in Lava Grey recyclate



Extended Drifter Picnic Set in upcycled wood



Rennesse (NL)



Drifter Tree Isle in upcycled wood



Drifter Top Seat in upcycled wood + backrest & armrest
Drifter Top Seat in Lava Grey recyclate

Drifter Top Seats & Tree Isles



Göteborg (SE)



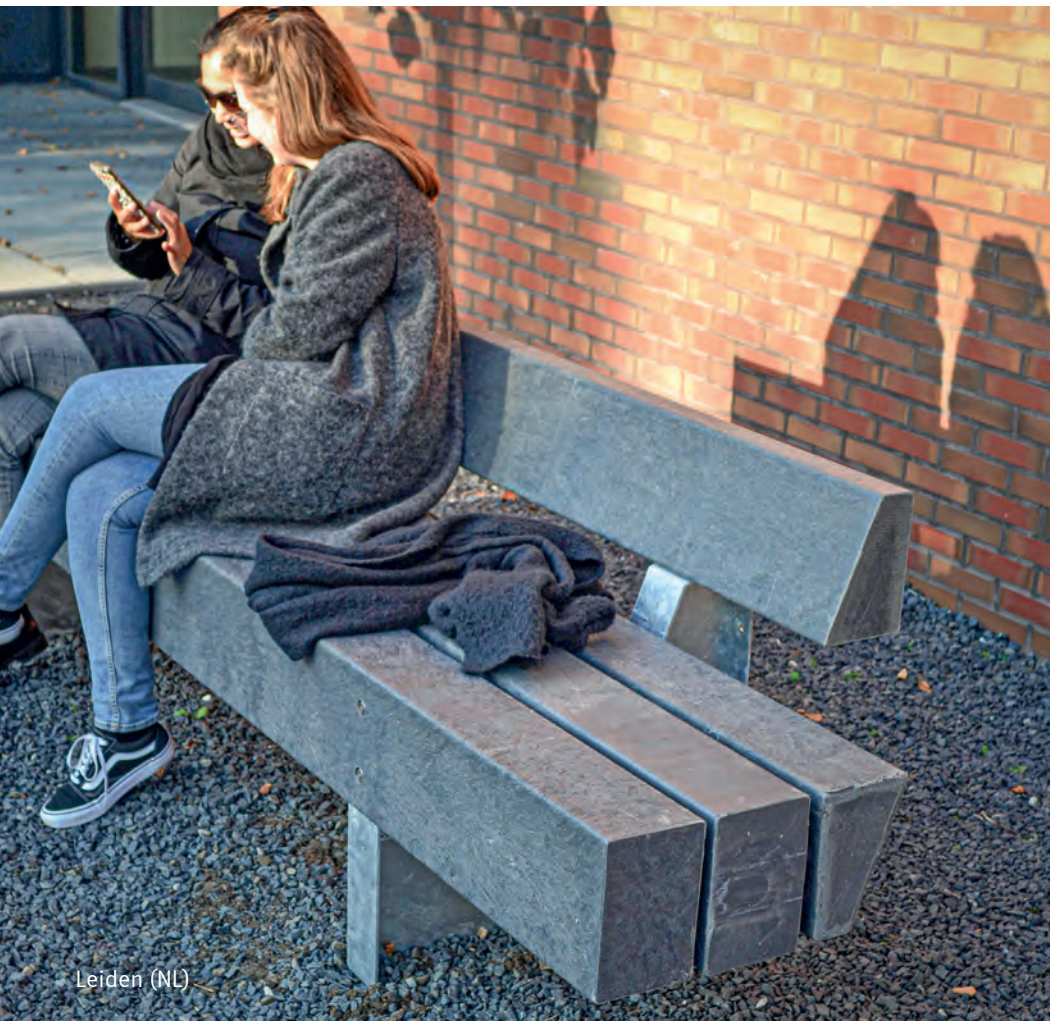
Terneuzen (NL)



Extended Heavy-Heavy Bench in Lava Grey



Heavy-Heavy Bench in upcycled wood
+ USB power charger



Leiden (NL)

EN

Heavy-Heavy (H-H) Benches are massive, heavy-duty benches created to reflect Streetlife's characteristic natural look. The heavy beams have a cross section of 14x21 cm – 5.5"x8.2". The backrests are multifunctional and can be used as lean-supports, seating, table tops, etc. The backrests can be linked together just like the benches in order to create a longer piece. H-H beams are made from different sustainable materials: FSC hardwood, Douglas and Lava Grey.

FR

Les Bancs Heavy-Heavy (H-H) sont des bancs solides et imposants au style naturel caractéristique de la collection Streetlife. Les poutres ont une section de 14x21 cm. Les dossiers polyvalents peuvent aussi servir d'assise, de table ou de point d'appui en position debout. Il est possible d'assembler deux bancs entre eux, auquel cas les dossiers sont également connectés l'un à l'autre. Les poutres H-H sont fabriquées en bois dur FSC, Douglas et Lava Grey.

DE

Die Heavy-Heavy (H-H) Bänke sind solide und robuste Bänke in schwerer Ausführung im natürlichen Stil von Streetlife. Die schweren Balken messen im Querschnitt 14x21 cm. Die Rückenlehnen sind multifunktional, sie können als Stehhilfe, Sitzfläche, Tischfläche usw. dienen. Bei einer Aneinanderreihung der Bänke können auch die Rückenlehnen angekoppelt werden. Für die Balken der Produktreihe H-H gibt es nachhaltige Materialversionen: FSC-Hartholz, Douglasie und Lava Grey..

NL

De Heavy-Heavy (H-H) Banken zijn solide en zwaar uitgevoerde banken in de 'natural style' van Streetlife. De zware balken hebben een doorsnede van 14x21 cm. De rugleuningen zijn multifunctioneel; ze fungeren als steun, zitvlak, tafelblad etc. Bij doorkoppeling van de banken kunnen ook de rugleuningen op elkaar worden aangesloten. De Heavy-Heavy balken worden gemaakt van verschillende duurzame materialen: FSC hardhout, Douglas en Lava Grey.

Heavy-Heavy Benches



South Jordan (USA)

Heavy-Heavy Industry Benches



Battersea, London (UK)



Bagneux, Paris (FR)



Heavy-Heavy Industry Bench in upcycled wood



Extended Heavy-Heavy Industry Bench in Lava Grey



Heavy-Heavy Industry Bench in upcycled wood + USB power charger



Heavy-Heavy Block Seats in upcycled wood



Heavy-Heavy Block Seats in upcycled wood



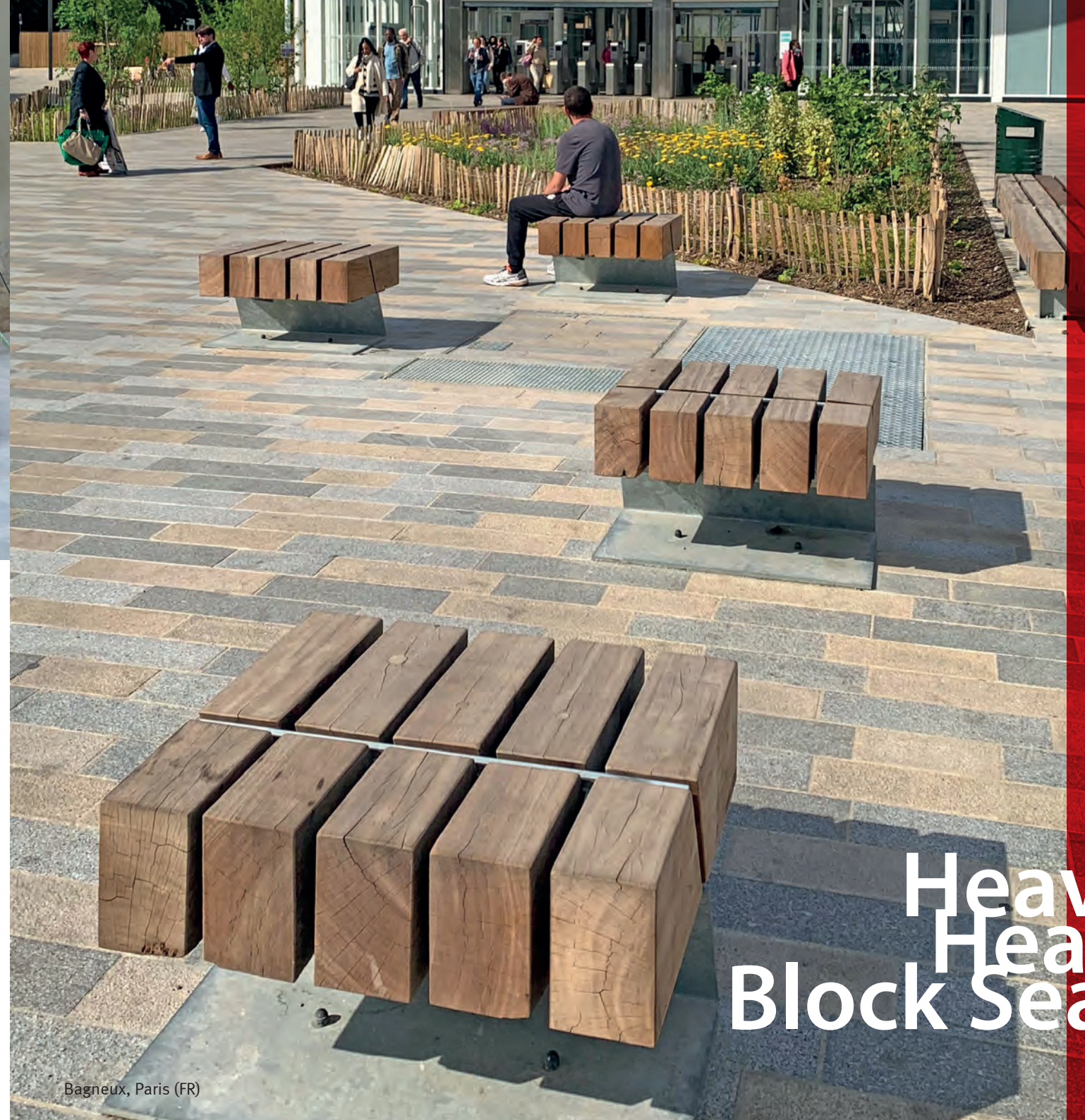
Figueres (ES)



Heavy-Heavy Block Seats in Lava Grey



Heavy-Heavy Block Seats in Lava Grey



Bagneux, Paris (FR)

Heavy-Heavy Block Seats



Heavy-Heavy Lounger in Lava Grey



Heavy-Heavy Lounger in upcycled wood

Heavy- Heavy Loungers



Barrier Park, London (UK)

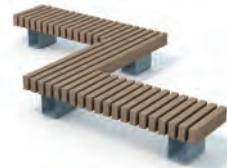


Courbevoie, Paris (FR)

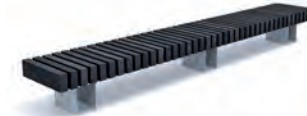
Rough & Ready Crosswise & Curved Benches



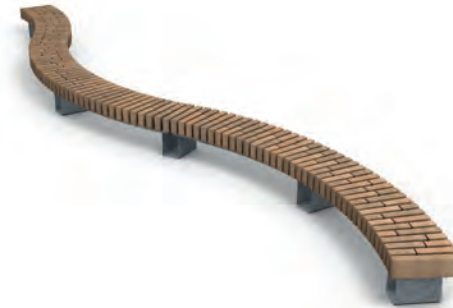
Rough&Ready Top Seat in All Black



Rough&Ready Heart Beat configuration



Rough&Ready Crosswise Bench in All Black



Rough&Ready Odds&Ends Curved Bench



Rough&Ready Curved Bench



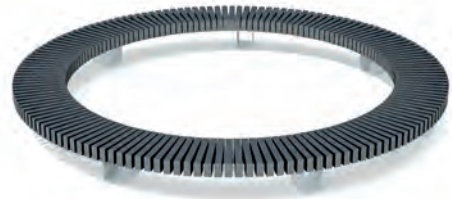
New York (USA)



Saint-Étienne (FR)



Rough&Ready Circular Bench + low backrest



Rough&Ready Circular Bench in All Black



Rough&Ready Odds&Ends Circular Bench



Alphen a/d Rijn (NL)

Rough & Ready Circular Benches



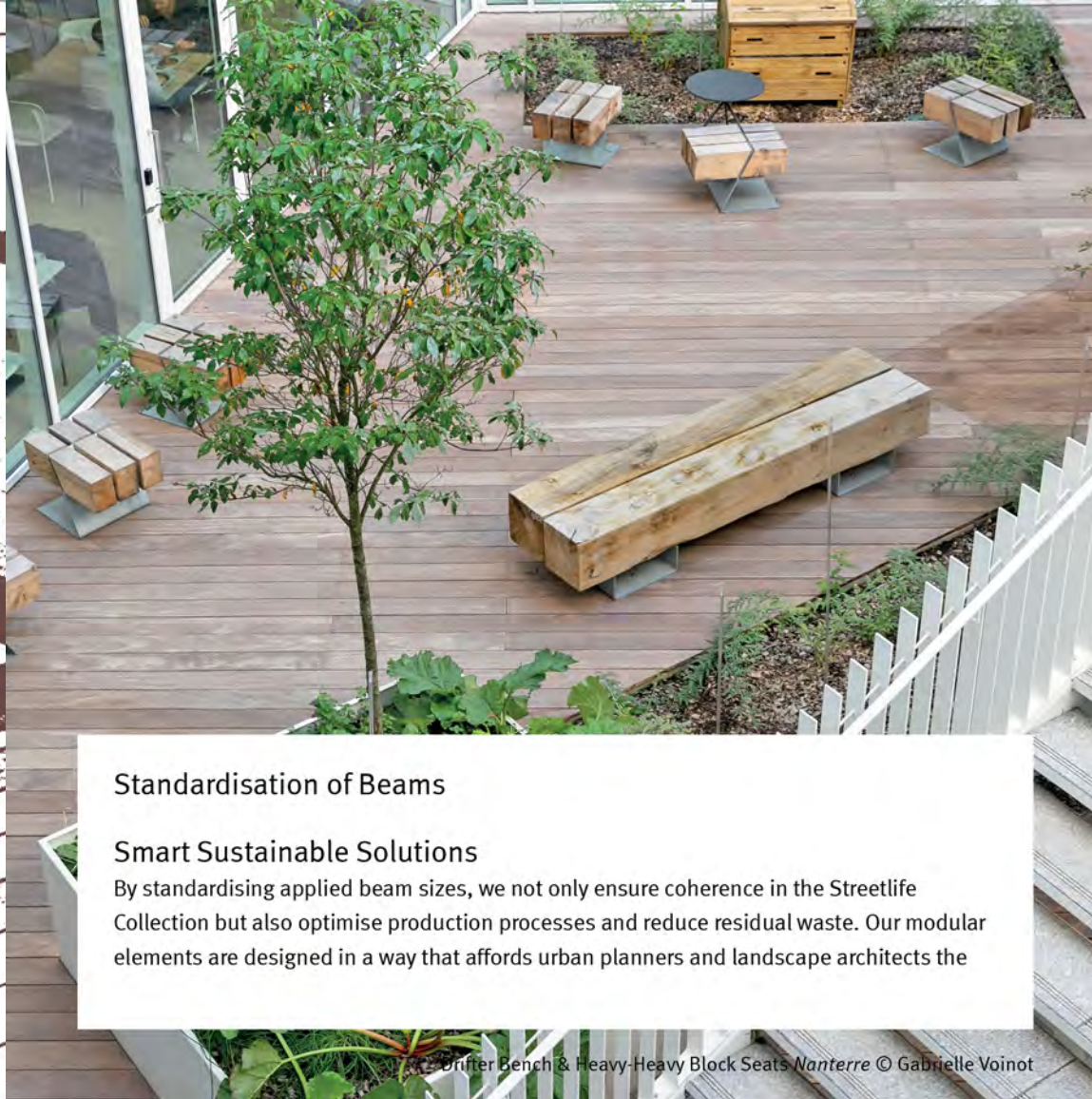
Atherton (USA)



NEW

Rough Ranges

NEW PRODUCTS



Standardisation of Beams

Smart Sustainable Solutions

By standardising applied beam sizes, we not only ensure coherence in the Streetlife Collection but also optimise production processes and reduce residual waste. Our modular elements are designed in a way that affords urban planners and landscape architects the

Drifter Bench & Heavy-Heavy Block Seats Nanterre © Gabrielle Voinot

Standardisation of Beams



Standardisation of Beams

1. Drifter

Beam 30x30 cm – 12”x12” with wide spacing
FSC wood, Lava Grey (EU), Cloudy Grey (USA)



2. Heavy-Heavy

Beam 14x21 cm – 5.5”x8.3” with wide spacing



FSC hardwood, Lava Grey (EU), Cloudy Grey (USA)

3. Rough&Ready

Beam 7x15 cm – 2.8”x5.9” with wide spacing
FSC hardwood, Accoya & All Black



4. Solid

Beam 7x7 cm – 2.8”x2.83” with narrow spacing



FSC hardwood, Accoya & Cloudy Grey

5. Cliffhanger



Drifter Picnic Sets

The Drifter Picnic Set is available in sizes up to 5 metre (max. length in North America is 118"). The extra-large hardwood beams of the Drifter Range are recycled and have a well-used look. By playing with the length of the Drifter benches, easy and playful or wheelchair-accessible arrangements can be made.



Drifter USB Power Charger

The USB Power Charger is a glass-bead blasted stainless steel module which is placed discreetly in the longitudinal side of a Drifter beam and can be used throughout the Drifter Range. The USB Power Charger has an IP67-protection rating, a standby function and is IEC (CB) and EMC certified to guarantee safe use outdoors.



Drifter Loungers

The Drifter Lounger is an addition to the fast-growing Drifter Range. Possessing a robust edge, the attractive Drifter Lounger is guaranteed to enhance any boulevard or park. The beams of the angled backrest are partially encased in the steel frame, making the Drifter Lounger a stable and coherent piece of furniture.



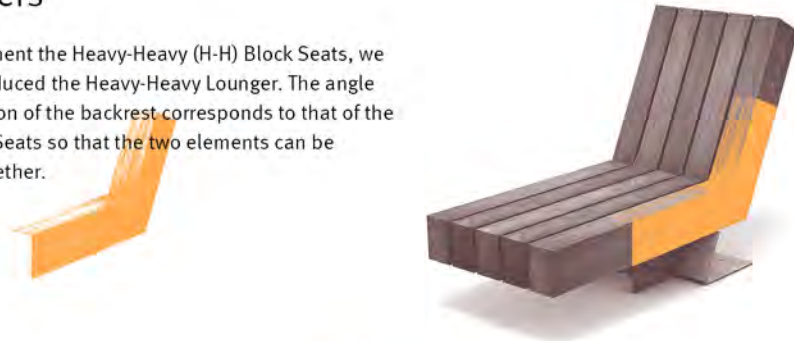
Drifter Tree Isles

Drifter Tree Isles are planter isles made from CorTen steel retaining walls with a Drifter seat integrated into the steel structure. The seats are available in segments up to a length of 3 metres – 118" in single or double beam versions. The double beam seats can be fitted with a Drifter Backrest.



Heavy-Heavy Loungers

To supplement the Heavy-Heavy (H-H) Block Seats, we have introduced the Heavy-Heavy Lounger. The angle of inclination of the backrest corresponds to that of the H-H Block Seats so that the two elements can be placed together.



Heavy-Heavy USB Power Charger

The USB Power Charger is a glass-bead blasted stainless steel module which is placed discreetly in the longitudinal side of a Heavy-Heavy beam and can be used throughout the Heavy-Heavy Range. The USB Power Charger has an IP67 protection rating, a standby function and is IEC (CB) and EMC certified to guarantee safe use outdoors.



Heavy-Heavy Industry Benches

Heavy-Heavy (H-H) Industry Benches feature sturdy supports with an industrial appearance. In contrast to standard H-H Benches, whose supports are concealed under the seat, the supports of H-H Industry beams are visible halfway up the beam. The Streetlock® nuts protrude through these plates to allow for fixing of the beams. The Streetlock® system extends the lifespan because the beams are easy to rotate, even after ten years. An attractive connecting support unit enables extra-long bench configurations.





Rough&Ready Odds&Ends Bench

The seat of the Rough&Ready (R&R) Odds&Ends Bench is made from residual waste created during the production of benches in the Streetlife R&R Range. The residual beams are assembled using stainless steel Streetlock® pin connections developed for this purpose. Because the pieces vary in length, a unique and playful pattern is created.



Rough&Ready USB Power Charger

The stainless steel USB Power Charger module is placed on the end of an R&R beam. The USB Power Charger can be used across the entire R&R Range. The Charger has an IP67 protection rating, a standby function and is IEC (CB) and EMC certified to guarantee safe use outdoors.



Rough&Ready Closed Top Seats

The closed load-bearing comb of the Rough&Ready (R&R) Closed Top Seats ensures that dirt and leaves do not accumulate between the seat and the base. These separate seating elements are mounted on a stone or concrete wall. R&R Closed Top Seats are made with FSC®-certified hardwood or the TWIN material All Black.



Rough&Ready Hug a Tub Cylindrical

The Rough&Ready (R&R) Hug a Tub is available in Rectangular, Oval and Cylindrical versions. The Cylindrical Shrubtub of Ø235 cm is fitted with a R&R Curved wall bench; a genuine eye-catcher. A flowering, multi-stemmed tree will come into its own in this sturdy structure. The R&R seat can be fitted completely round, half round or a quarter round.

Environment-friendly choices

The distinctive image of our products is defined by the materials we use. While colour and texture are important, choice of material is also determined by maintenance and durability. Many of the materials Streetlife uses can be returned to the production chain at the end of a product's lifespan: they can be recycled or reused or are made from bio-based composites. Waste is thus minimised. Moreover, Streetlife sources its materials sustainably and our FSC certification ensures that only hardwood from responsibly managed forests is used.

Innovations in the field of sustainable materials, including biobased substances and composites made from residual waste, provide a wealth of opportunities to make the Streetlife Collection more sustainable. Recycling contributes to stemming the growth of the waste mountain and reduces the amount of material incinerated for energy or used as landfill. In the event of reuse, existing materials undergo minimal processing when given a second life in a new product.



VIRGIN HARDWOOD 1
Rough&Ready: 7x15 cm | 2.8x5.9"
Virgin FSC 100% wood
Density: 800 kg/m²



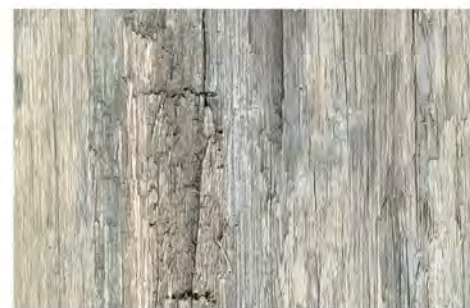
ACCOYA (Only in EU)
Rough&Ready: 7x15 cm | 2.8x5.9"
Virgin FSC mix 70% wood
Density: 512 kg/m²



LAVA GREY
Drifter: 30x30 cm | 12x12"
Heavy-Heavy: 14x21 cm | 5.5x8.3"
Recycled Post Consumer Plastics
100% Recycled PE & PP
Density: 1020 kg/m²



ALL BLACK
In Rough&Ready: 7x15 cm | 2.8x5.9"
Recycled industrial and agriculture plastics
100% Recycled PE & PP
Density: 800 kg/m²



RECYCLED HARDWOOD
Drifter: 30x30 cm | 12x12"
Heavy-Heavy: 14x21 cm | 5.5x8.3"
FSC Recycled 100% wood
Density: 1100 kg/m²



FSC 100% RECYCLED WOOD
Drifter: 30x30 cm | 12x12"
Heavy-Heavy: 14x21 cm | 5.5x8.3"
FSC Recycled 100% wood
Density: 1100 kg/m²

All Streetlife products are protected by international model depots and design patents.



Editor and Copyright 2023: Streetlife, Leiden

Concept, coordination and texts: Peter Krouwel, Aimée Kan

Elaboration: Aimée Kan, Kim van den Hoven, Remco Mulckhuysen

Photography: Streetlife, Scott Shigley, James Gessel, Cristian Costea, Kristinehamns Kommun

Printed by: Tuijtel

In view of the variations in material prices, we advise you always to request a quote including prices and delivery times. The product measurements shown along with the images are in centimetres and rounded inches: length x width x height.

Right down to the smallest details, each Streetlife design is oriented to quality and sustainability. Streetlife reserves the right to modify dimensions, specifications and prices.



San Francisco (USA)



Brooklyn (USA)

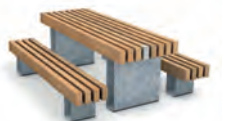
Rough & Ready Benches & Picnic Sets



Rough&Ready 10 Bench + high backrests



Rough&Ready 10 Bench in All Black



Rough&Ready Picnic Set + USB power charger



Courbevoie (FR)



Cambridge (USA)

EN

Rough&Ready (R&R) is a unique and versatile product family in the Streetlife Collection. Products in the R&R family possess a minimalist design and the range covers all categories offered by Streetlife, from street furniture and tree isles to bridges and shades. Within the Streetlife Collection, R&R products are uniquely coherent due to their coordinated 7 x 15 cm beam size and have a sturdy, robust appearance.

FR

La gamme Rough&Ready (R&R) est une famille de produits originale et polyvalente au sein de la Collection Streetlife. Les produits R&R ont cette touche « minimaliste » caractéristique et la gamme reprend toutes les catégories de produits proposées par Streetlife : du mobilier urbain aux îlots d'arbres en passant par les ponts et passerelles. La cohérence entre les différents produits R&R provient de la section de bois utilisée de 7x15cm. La gamme Rough&Ready se caractérise par une allure robuste et naturelle.

DE

Rough&Ready (R&R) ist eine vielseitige Produktfamilie innerhalb der Streetlife-Kollektion. R&R erstreckt sich auf alle bei Streetlife erhältlichen Kategorien wie Stadtmobiliar, Fuß- und Radwegstege oder Shades. Die innere Kohärenz zwischen den verschiedenen Teilen der R&R-Produktfamilie ist auf die einheitlichen Maße der Balken (7 x 15 cm) zurückzuführen. Mit seinem minimalistischen Design hat Rough&Ready eine lässig-robuste Ausstrahlung.

NL

Rough&Ready (R&R) is een unieke en veelzijdige product-familie binnen de Streetlife Collectie. De producten hebben een 'minimal' design en de familie behelst alle productcategorieën die door Streetlife worden aangeboden; van straatmeubilair en boomeilanden tot bruggen en shades. De unieke samenhang tussen al deze verschillende R&R-producten komt voort uit de toegepaste balkmaat van 7x15 cm. De Rough&Ready Range heeft een stoer en robuust uiterlijk.



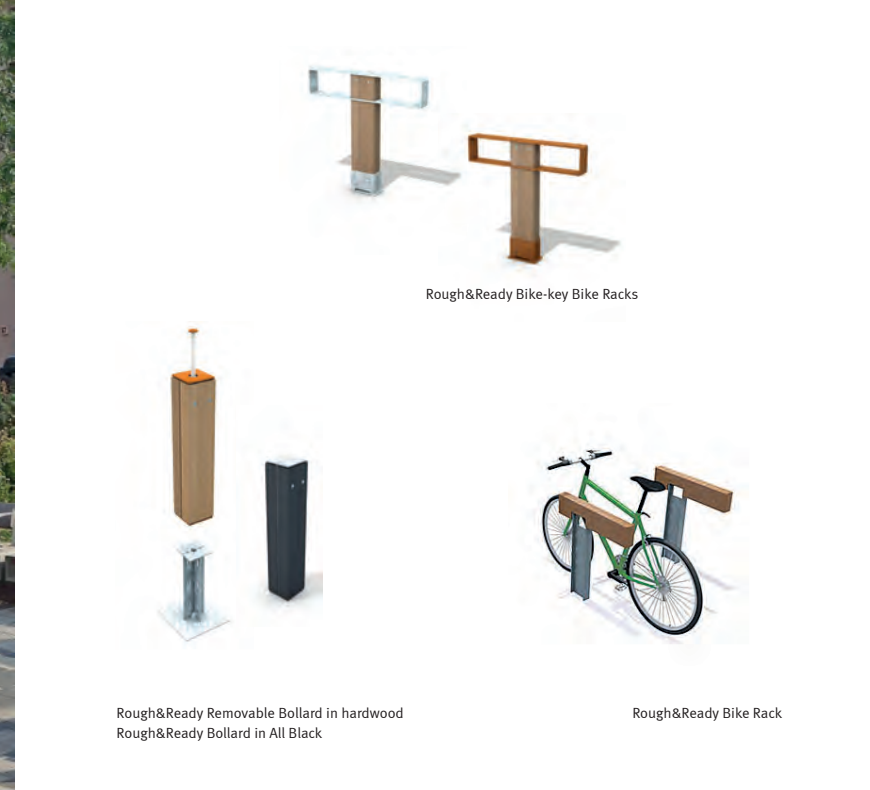
Kinderdijk (NL)



Malmö (SE)



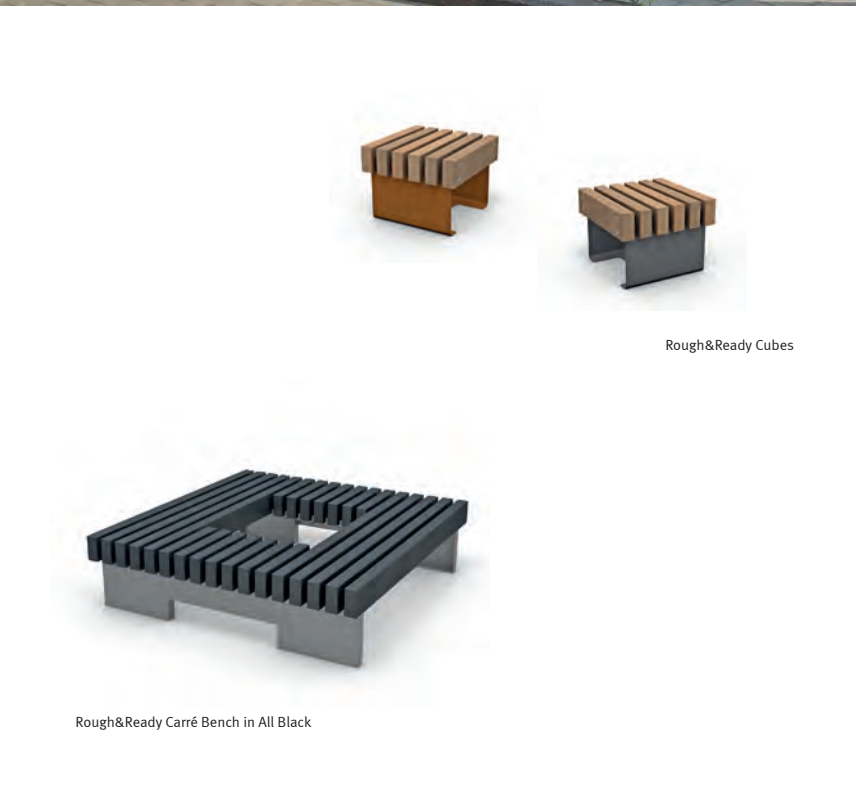
Gent (BE)



Rough&Ready Bike-key Bike Racks

Rough&Ready Removable Bollard in hardwood
Rough&Ready Bollard in All Black

Rough&Ready Bike Rack



Rough&Ready Cubes

Rough&Ready Carré Bench in All Black



Gatineau (CA)



Rough & Ready Carre Benches & Cubes

Munich (DE)



Courbevoie, Paris (FR)

Rough&Ready Loungers & Lounge Seats



Chicago (USA)



Rough&Ready Lounge Seats

Rough&Ready Lounge Seat XL



Rough&Ready Lounger XL & XXL

Rough&Ready Lounger XXL in All Black



Lingen (DE)



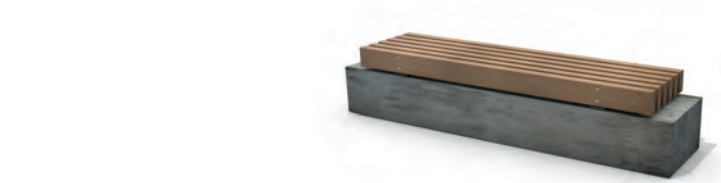
Rough & Ready Top Seats & Seatwalls



Hillegom (NL)



Rough&Ready Top Seat



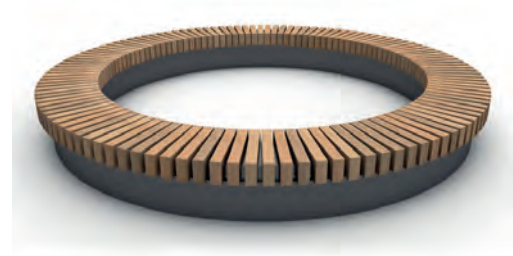
Rough&Ready Top Seat



Rough&Ready Crosswise Top Seat in All Black



Rough&Ready Crosswise Top Seat



Rough&Ready Circular Top Seat



Seattle (USA)

Oud-Beijerland (NL)



Kristinehamn (SE)



Rough&Ready Green Screen System
with cantilevered All Black benches

Rough&Ready Green Screen System
with canopy option



Rough & Ready Green Screen System

Southend-on-Sea (UK)



London (UK)

Rough & Ready Big Green Benches



Rough&Ready Big Green Bench



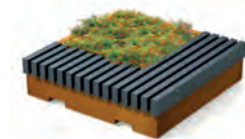
Rough&Ready Big Green Bench in All Black



Rough&Ready Big Green Bench with backrests



Rough&Ready Big Green Bench



Rough&Ready Big Green Bench in All Black



Amsterdam (NL)



Erfurt (DE)

Rough & Ready Hug a Tub



Paris (FR)



Delémont (CH)



Rough&Ready Hug a Tub Cylindrical

Rough&Ready Hug a Tub Cylindrical

Rough&Ready Hug a Tub Oval in All Black



New York (USA)



Verneuil sur Seine (FR)



Thônex (CH)



Philadelphia (USA)

Rough & Ready Tree Isles



Rough&Ready Shade Linear



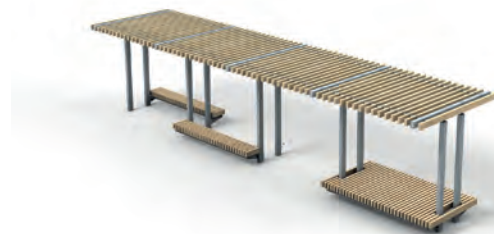
Rough&Ready Shade Curved



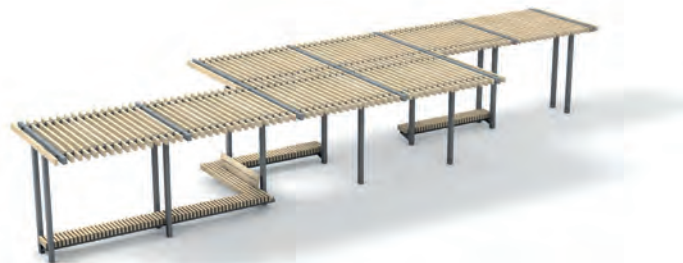
Brumunddal (NO)



Stockholm (SE)



Rough&Ready Hover Shade



Rough&Ready Hover Shade



Toronto (CA)

The Rough & Ready Shades

The Rough & Ready Country Bridges



Epen (NL)

EN

The Country Bridges are fitted with a R&R Baluster system. The bridges are flat and exceptionally modest in design. Streetlife is your specialist partner in bridges and decking. The Streetlife Collection offers an extensive range of prefab pedestrian and bicycle bridges. Strength calculations and technical specifications are available on request.

FR

Les passerelles planes Country sont dotées d'un système de garde-corps R&R. Elles ont une esthétique discrète. Streetlife est un partenaire expert en matière de passerelles et de revêtements. La Collection Streetlife propose un vaste choix de passerelles préfabriquées pour piétons et cyclistes. Les spécifications techniques et calculs statiques sont disponibles sur demande.

DE

Die Country Brücken sind mit einem R&R-Geländersystem ausgestattet. Diese flachen Brücken haben eine äußerst zurückhaltende Formgebung. Streetlife ist ein sehr erfahrener Partner für Brücken und Deckbeläge. Die Streetlife Kollektion bietet ein umfangreiches Programm vorgefertigter Fußgänger- und Fahrradbrücken. Tragkraftberechnungen und technische Spezifikationen können auf Anfrage bereitgestellt werden.

NL

De Country Bridges worden voorzien van een R&R Baluster systeem. Deze vlakke bruggen hebben een uiterst terughoudende vormgeving. Streetlife is een kennisintensieve partner in bruggen en dekken. In de Streetlife Collectie is een uitgebreid programma van prefab voetgangers- en fietsbruggen opgenomen. Sterkte berekeningen en technische specificaties zijn op aanvraag beschikbaar.



Maastricht (NL)



Rough&Ready Country Bridge High



Rough&Ready Country Bridge Low



Båstad (SE)



Rotterdam (NL)

The Streetlife Collection

STREETLIFE is a design driven company for innovative outdoor concepts. The Collection consists of the following categories: Street Furniture | Benches | Tables | Tree Planters | Tree Grids | Bicycle Parking | Bollards | Shades | Bridges and Deckings

Please contact us by e-mail: streetlife@streetlife.com

Our experienced advisors are well trained in technical details and are able to communicate in English, Nederlands, Deutsch, Français, Español and Svenska.

More information is available on our website www.streetlife.com

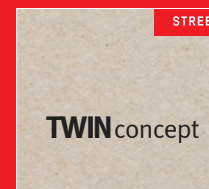
- find the complete and innovative Streetlife Collection and get inspired
- product search tool: The Product Selector
- recent projects and product photos
- our online catalogues (PDF) are available in Nederlands, English, Deutsch & Français
- hardcopy is available in Nederlands, English, Deutsch and Français.

Streetlife Collection



Catalogue

Thematic Brochures



TWIN Concept



Solid Series



Green & Groovy



Walking on Water