

Fitness Legacy Zone	
Inclusive Hand Bike	
PROD. CODE	6210-071
SIZE	935x1125x510mm
AGE RANGE	14 to Adult
F/ FALL HEIGHT	<600mm
HEAVIEST PART	Approx 50Kg
TOTAL WEIGHT	Approx 75Kg
	

SPECIFICATION

Steel plate to EN 10025
 Steel CHS to EN 10219
 Steel RHS to EN 10219
 Welding to EN ISO 14341:2011

Polyester powder paint to EN 13438:2005
 Standard fixings to BS 3692:2001 and BS 4190:2001
 Non-standard fixings are anti-vandal and corrosion resistant

INSTALLATION INSTRUCTIONS

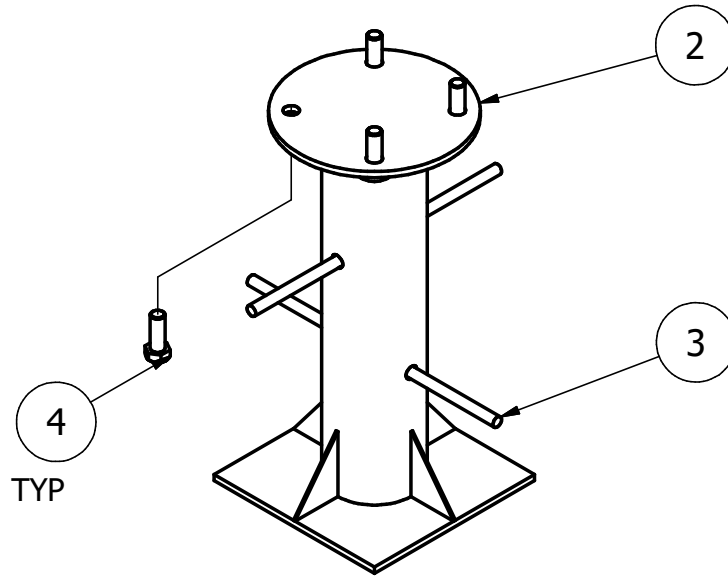
- 1 Read installation instructions thoroughly before commencing installation of unit.
- 2 Excavate one hole to 600 x 600 x 600 deep - see page 2.
- 3 Position and assemble the below ground fixing with spragging irons (see page 2) centrally in the excavated hole so the four bolts are pointing upwards ensuring that the top plate is flush with the finished surface level.
- 4 Check alignment of bolts and backfill the holes with concrete (0.21 cu Metres) (4 parts gravel, 2 parts sand & 1 part cement) ensuring the parts are perpendicular to the finished surface level.
- 5 Allow the concrete to set for 48 hours.
- 6 Position the unit on the below ground fixings and fit using one M20 washer, one M20 spring washer and one M20 nut per bolt as shown on page 3. Ensure unit is perpendicular to the ground surface. Ensure all moving parts move freely without obstruction. Centre punch thread in two places on all four M20 Bolts and then fit nut cap (see page 3).

Note

Note Ensure all installation aids are removed before first use.

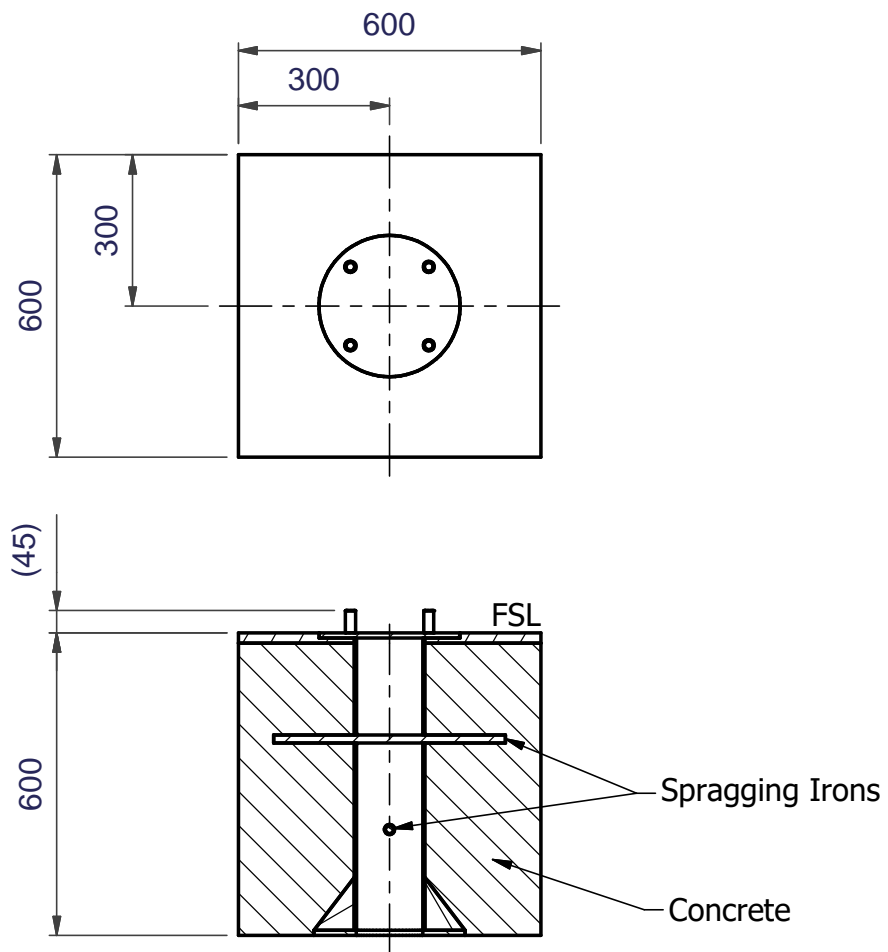
Below Ground Fixing Details

(1 off)



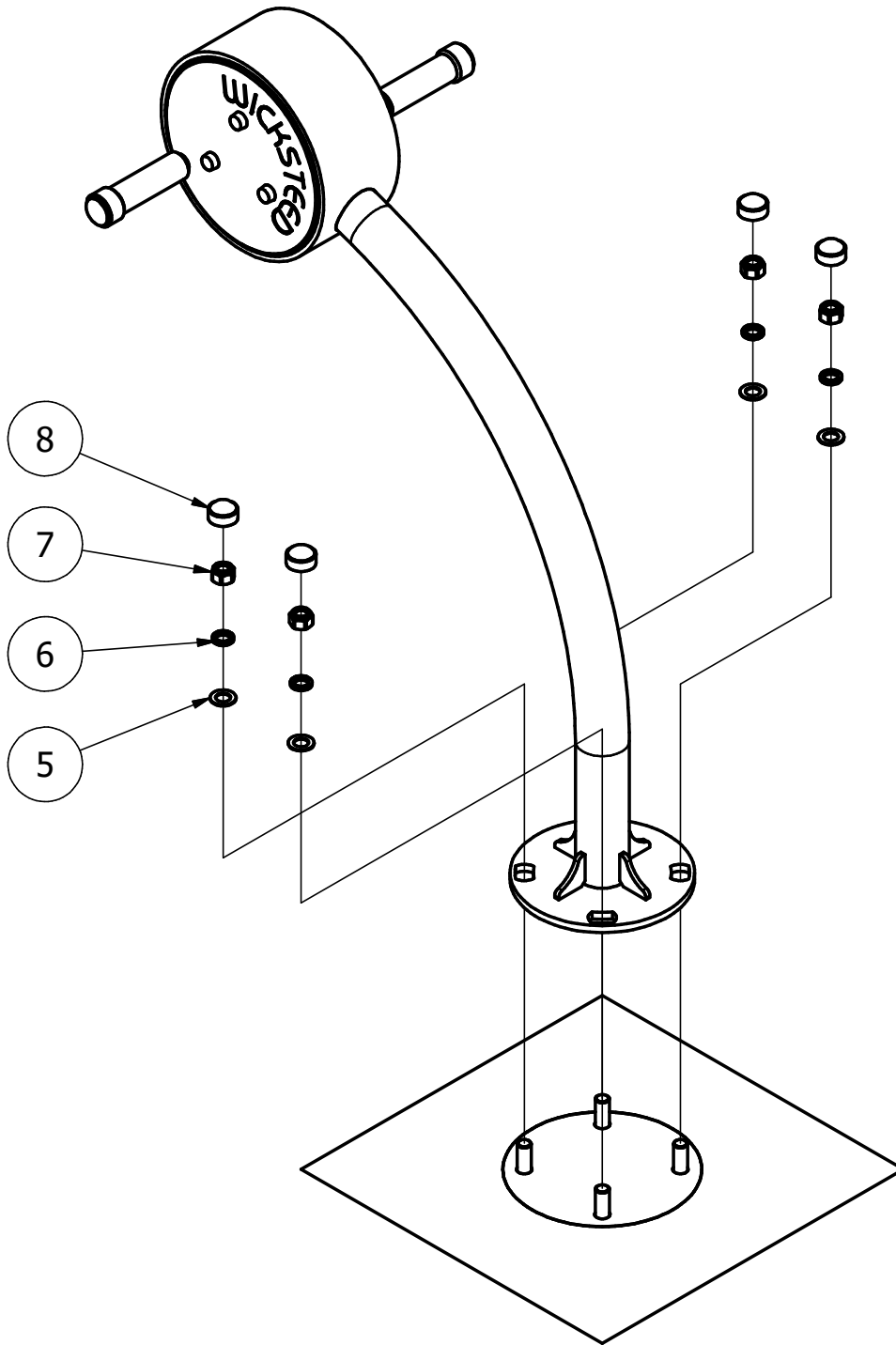
Foundation Detail

(Care must be taken in abnormal conditions)

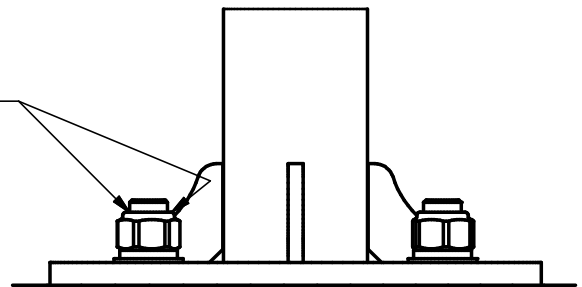


FSL = Finished Surface Level

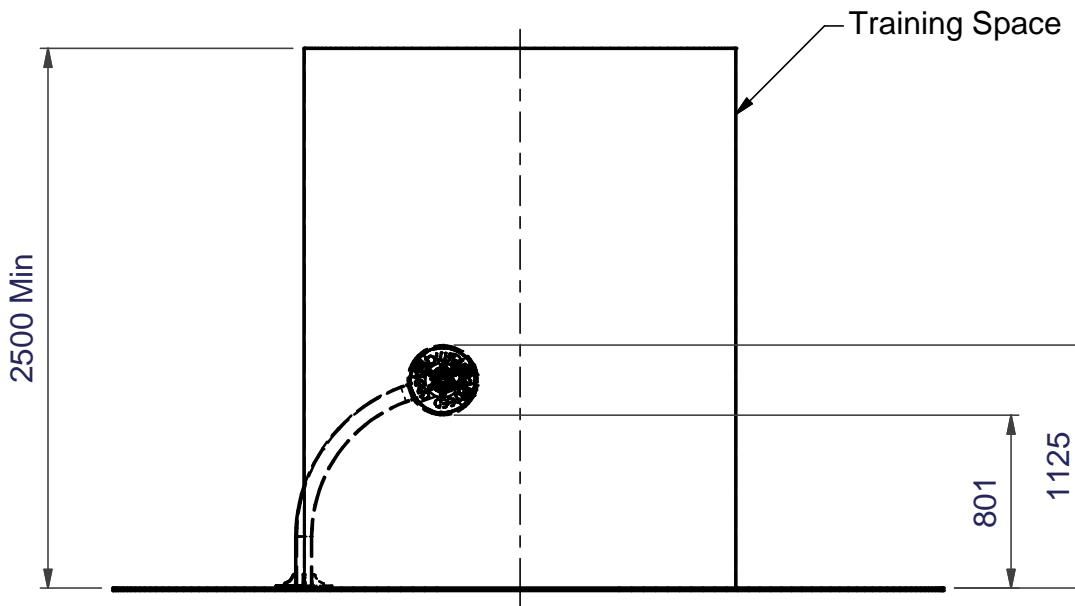
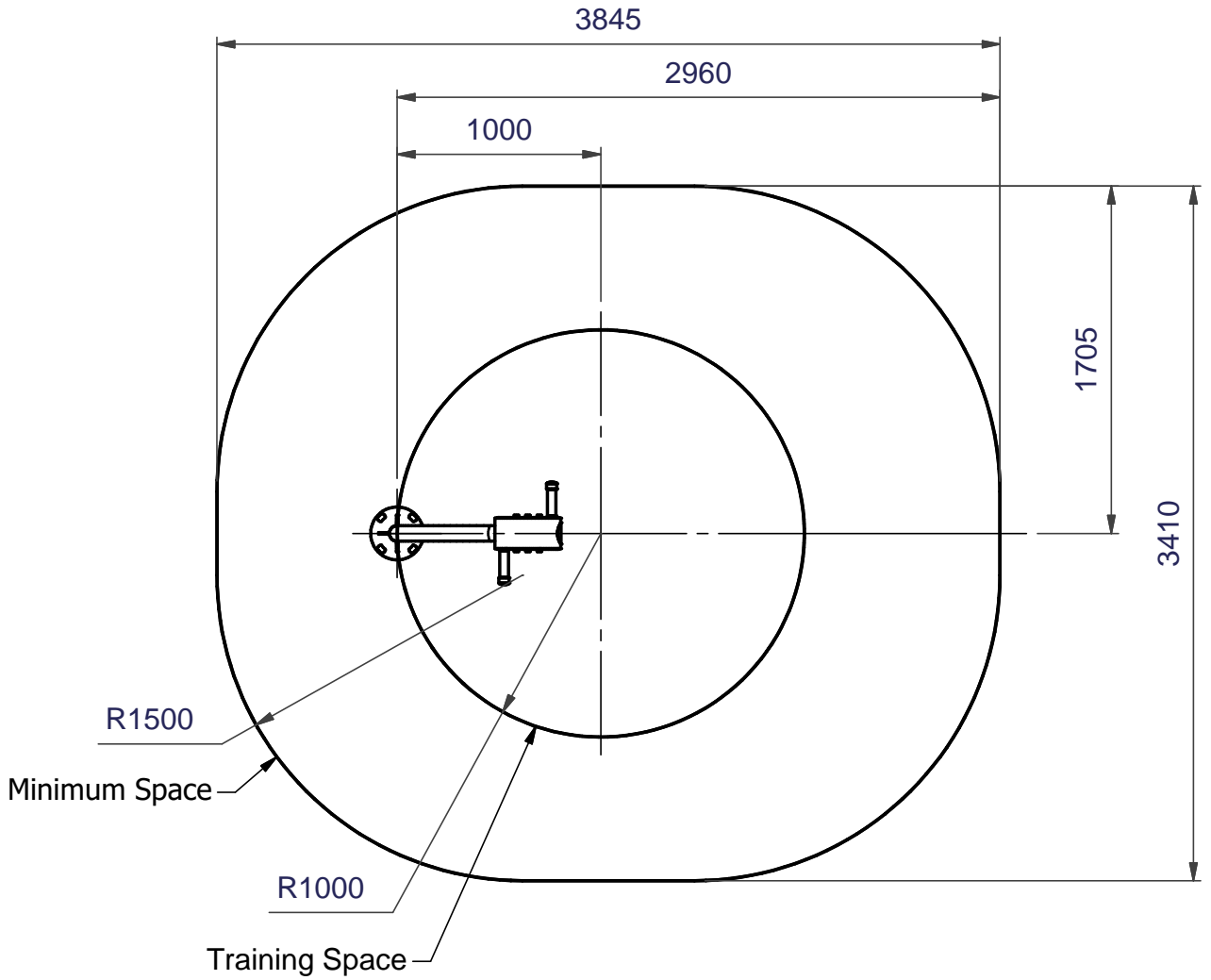
Inclusive Hand Bike to Below Ground Fixing Details



Centre punch thread in two places
on all four M20 Bolts



Minimum and Training Spaces

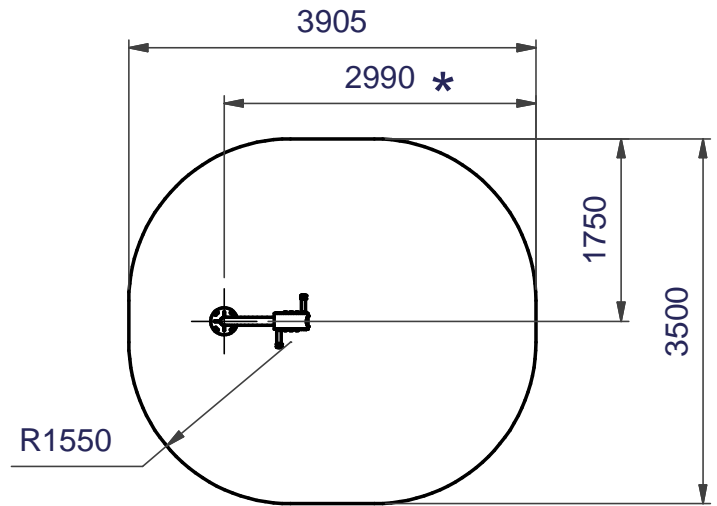


Safety Surfacing

Wetpour

12.0 Sq. Metres 40mm Wetpour
12.5 Linear Metres Wetpour Edging

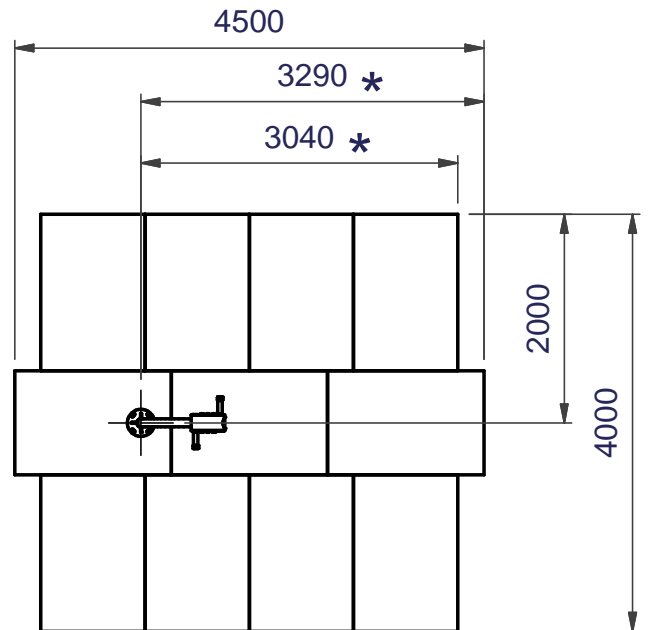
* Dimension from centre of
Below Ground Fixing



Grass Mats (1500 x 1000mm)

11 off Total

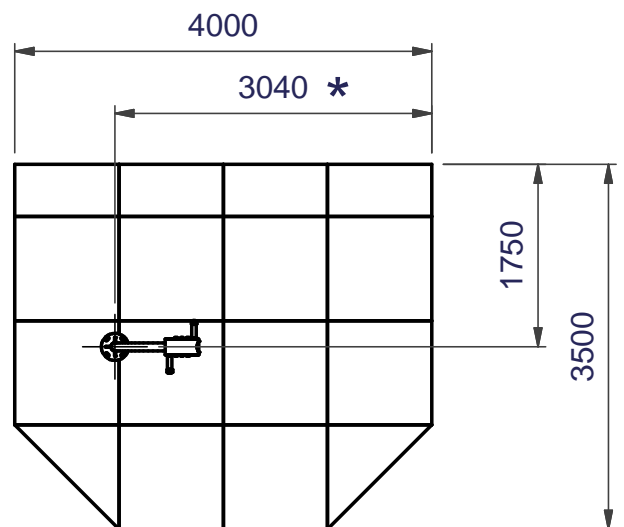
* Dimension from centre of
Below Ground Fixing



Safety Tiles (1000 x 1000mm)

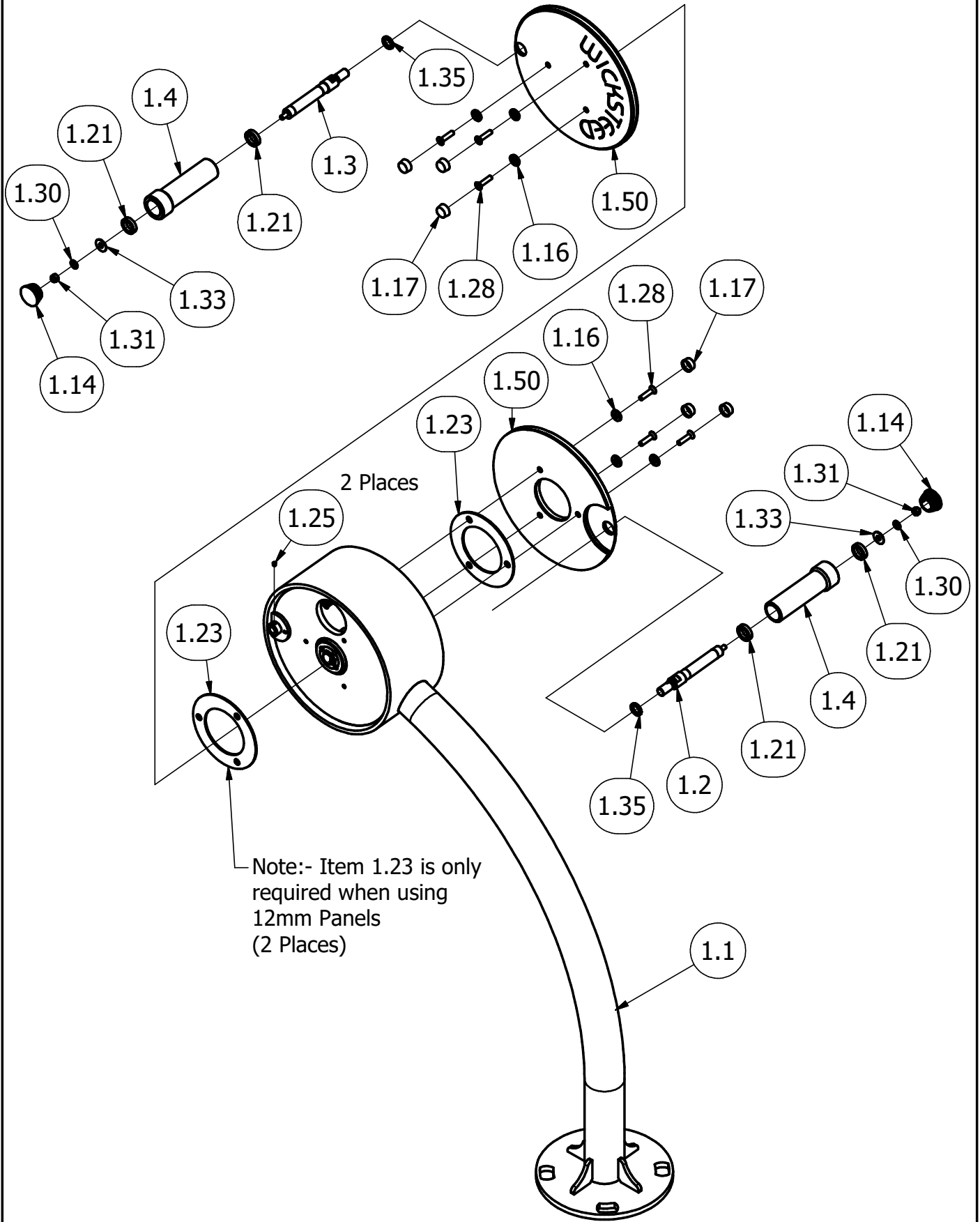
13.0 Sq. Metres
40mm Thickness
14.0 Linear Metres of Tile Edging

* Dimension from centre of
Below Ground Fixing



Fixing Details for Maintenance

Handle and Mechanism Cover Assembly

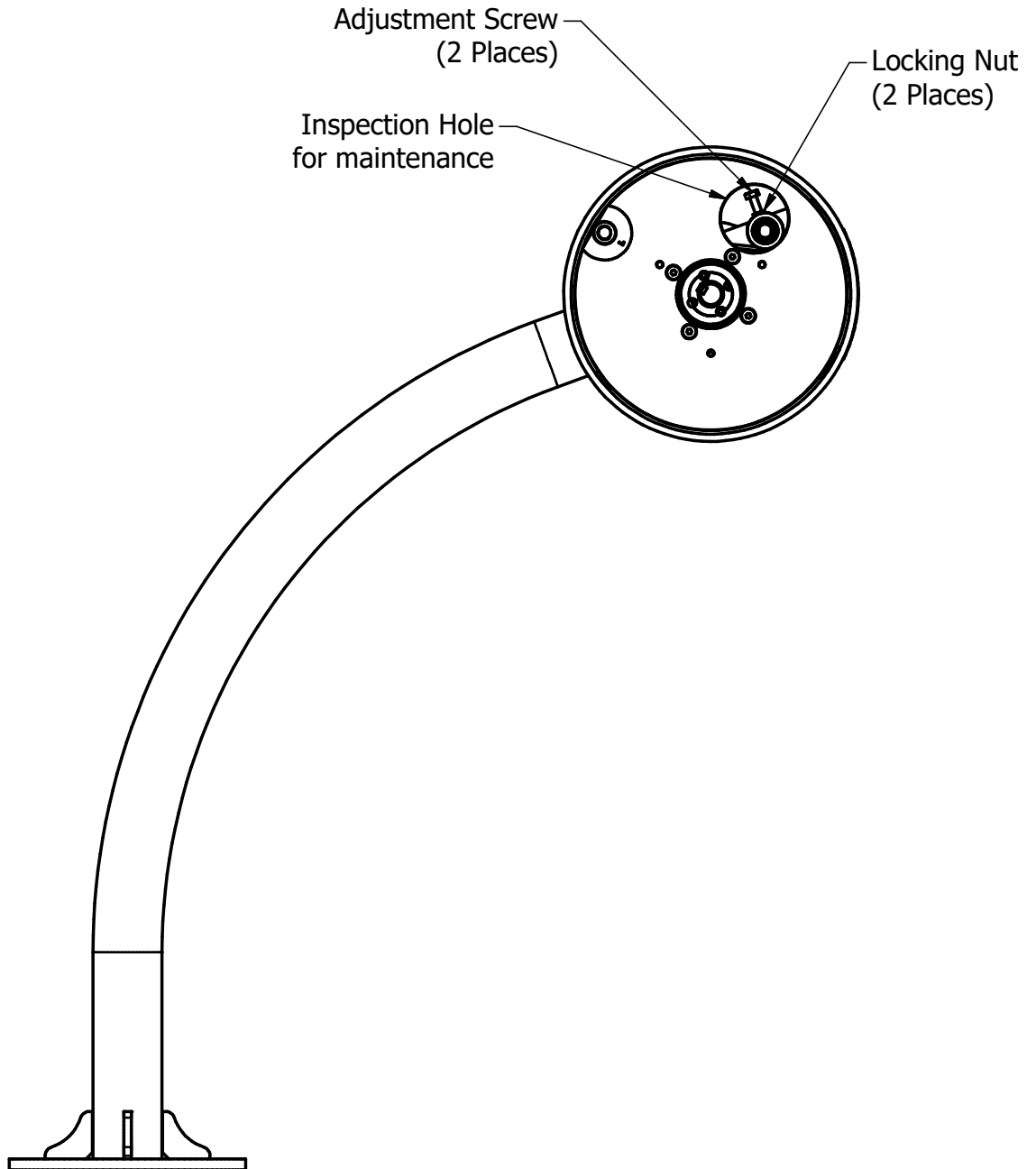


Note:- Item 1.23 is only required when using 12mm Panels (2 Places)

Fixing Details for Maintenance

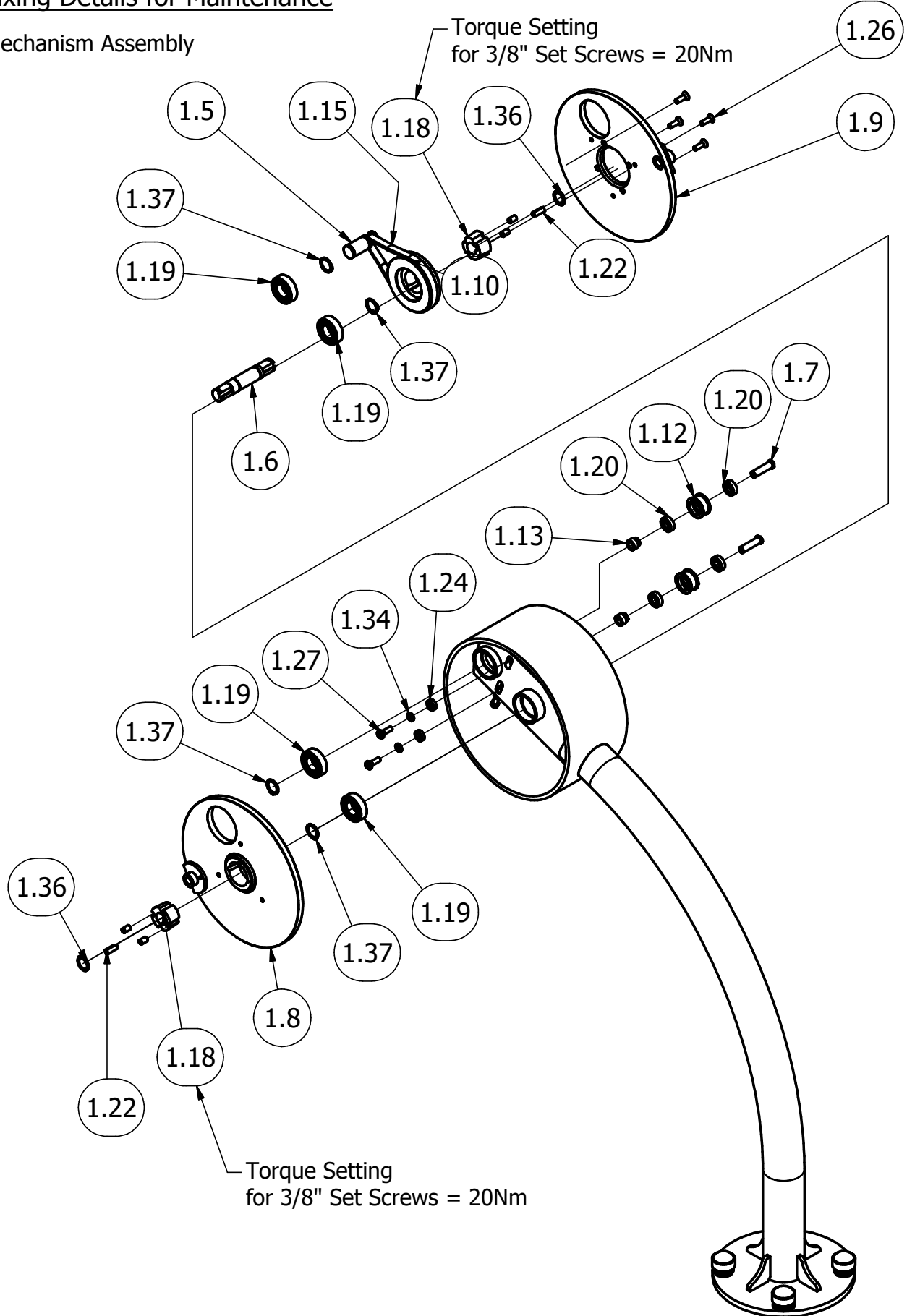
Belt Tension Adjustment

Remove Left or Right Hand Handle and Mechanism Cover Panel (see previous sheet)



Fixing Details for Maintenance

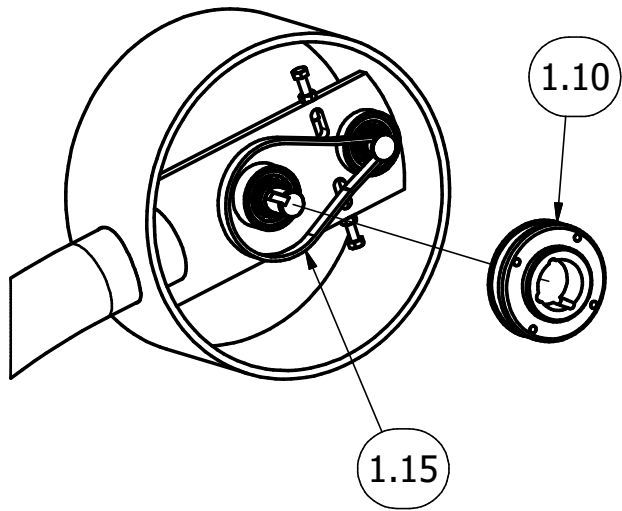
Mechanism Assembly



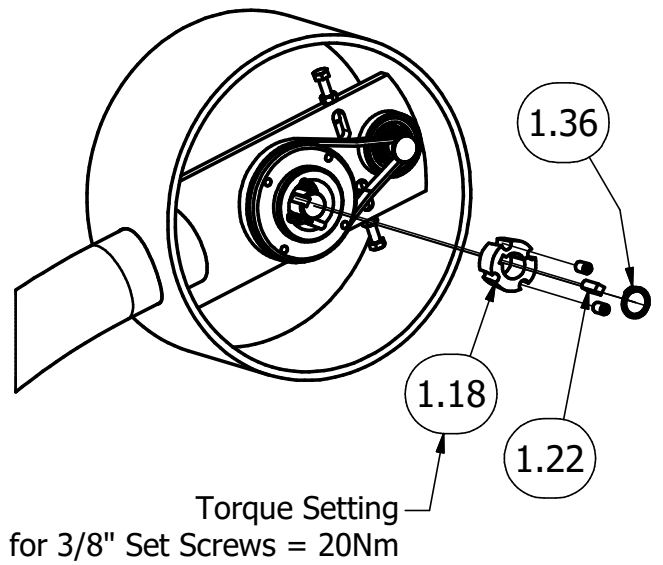
Fixing Details for Maintenance

Belt Fitting

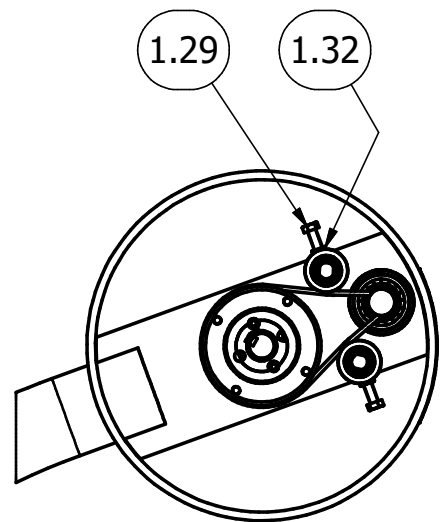
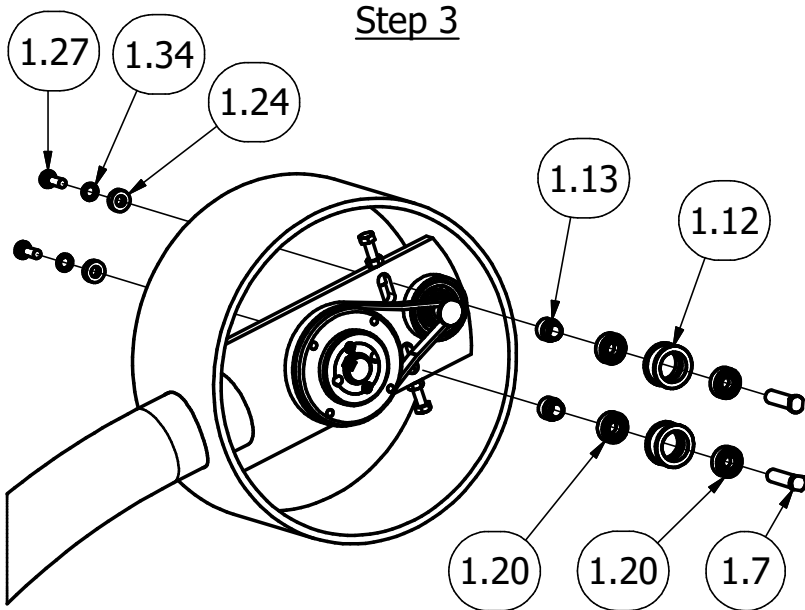
Step 1



Step 2



Step 3



Belt Tension Adjustment

Parts List			
ITEM	QTY	PART NUMBER	DESCRIPTION
1	1	5104-022	Inclusive Hand Bike Assembly
1.1	1	4202-730	Inclusive Hand Bike Frame W.A.
1.2	1	3033-316	Pedal Spindle (L) Left Hand Thread
1.3	1	3033-317	Pedal Spindle (R) Right Hand Thread
1.4	2	3030-373	Bearing Housing/Handle
1.5	1	3030-377	Spindle
1.6	1	3030-378	Spindle (for Bikes)
1.7	2	3033-154	Jockey Spindle
1.8	1	4202-015	Mechanism Plate W.A.
1.9	1	4202-016	Mechanism Plate
1.10	1	4202-017	Pulley Wheel W.A.
1.11	2	3756-075	Mechanism Cover
1.12	2	3030-380	Jockey Wheel
1.13	2	3030-379	Spacer
1.14	2	2611-005	END PLUG (1¼ NB)
1.15	1	2900-102	Drive Belt
1.16	6	2611-043	White Washer Boltcap 66
1.17	6	2611-044	Black Boltcap 66-180
1.18	2	2412-007	METRIC TAPER BUSH 1210-24 c/w SET SCREWS
1.19	4	2541-105	BALL BEARING Ø52 x Ø25 x 15
1.20	4	2541-127	Roller Bearing (6001-ZZ)
1.21	4	2541-135	Roller Bearing (61804-ZZ)
1.22	2	3069-033	Key
1.23	2	3292-156	Plate
1.24	2	3030-418	Spacer
1.25	2	2171-101	M6x6 Grub Screw
1.26	4	2171-169	M8 x 25 C'SK SKT HD SCREW
1.27	2	2188-002	M8 x 25mm Lg TORX Drive Pan Head
1.28	6	2171-171	M8 x 35 C'SK SKT HD SCREW
1.29	2	2175-109	M8 x 45 LG HEX HD SCREW
1.30	2	2215-507	M8 Washer
1.31	2	2192-001	M8 Nyloc Nut
1.32	2	2193-004	M8 HEX NUT
1.33	2	2215-525	3/8" x 1" Plain Washer
1.34	2	2212-203	M10 Spring Washer
1.35	2	2212-211	M16 Nord Lock Washer
1.36	2	2441-013	External Circlip Ø24mm
1.37	4	2441-014	External Circlip Ø25mm

Continued on page 11

Parts List			
ITEM	QTY	PART NUMBER	DESCRIPTION
2	1	5071-031	BELOW GROUND FIXING
3	2	3030-310	460mm Spragging Iron
4	4	2175-181	M20 x 55 HT HEX HD SCREW
5	4	2215-512	M20 WASHER 2mm THK
6	4	2212-206	20mm SPRING WASHER
7	4	2192-012	M20 nyloc nut
8	4	2613-021	M20 Nut Cap

COMPILED MC	REV	0							
	ECN	1752							
DATE: 12/01/17	SIG.	MC							
	DATE:	12/01/17							

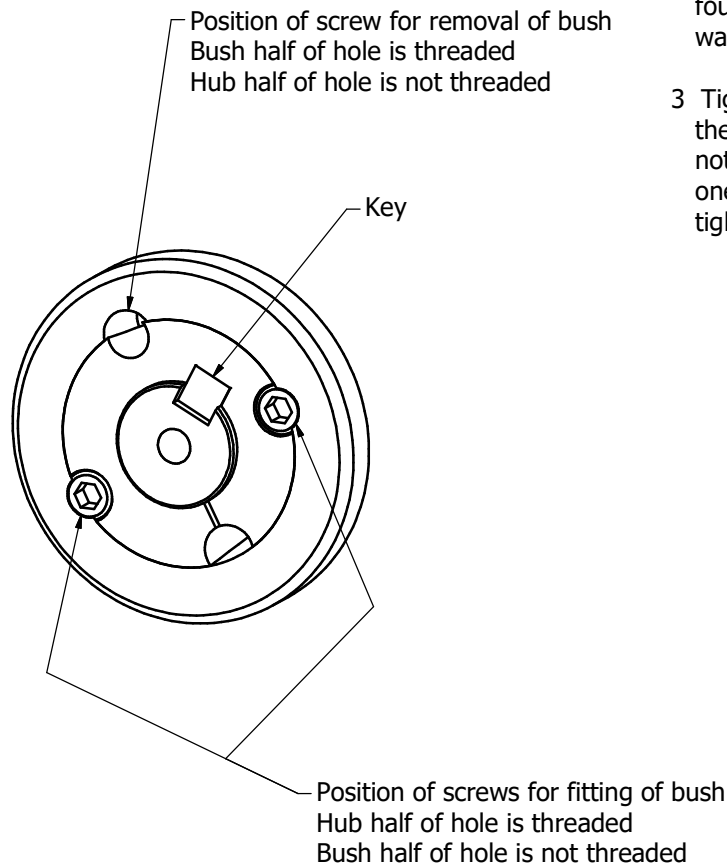


Taper lock bush fitting

- 1 Clean shaft, bore and outside of bush, bore of hub and key. Remove any oil, laquer or dirt. Place bush in hub and match half holes to make complete holes (each complete hole will be threaded on one side only)
- 2 Lightly oil thread and point of set screws, or thread and under head of cap screws. Place screws loosely in holes that are threaded on hub side
- 3 Make sure bush is free in hub. Slip assembly onto shaft and locate in the desired position and fit the key in position. Ensure top clearance on key fitting
- 4 Tighten screws alternately and evenly until all are pulled up tightly (3/8" set screw torque = 20Nm)
 Note that the bush will tighten onto the shaft first, then draw the hub slightly up the taper. This may affect the final axial position of the hub on the shaft. Adjustment of starting position may have to be made to accommodate this
- 5 Hammer against large end of bush using hammer and block or sleeve to avoid damage. Screws can now be turned a little more to the specified torque setting. Repeat this alternate hammering and screw re-tightening until the specified torque is reached.
- 6 Run the unit for a short period, approximately 100 cycles, then re-torque the bush screws.
- 7 Fill empty holes with grease to exldue dirt

Taper lock bush removal

- 1 Remove all screws. Lightly oil thread and point of set screw, or thread and under head of cap screws
- 2 Insert screw into removal hole that is threaded on the bush side. In sizes where washers are found under screw heads, be sure to use these washers
- 3 Tighten screw until bush is loosened in hub and then remove complete assembly. If bush does not loosen immediately, tap on hub. If more than one removal hole, use that number of screws and tighten them alternately to loosen bush



REV	ECN	SIG	DATE

© WICKSTEED LEISURE LTD.
 THIS DOCUMENT AND THE COPYRIGHT THEREIN ARE THE PROPERTY OF WICKSTEED LEISURE LTD. AND MAY NOT BE USED, COPIED OR DISCLOSED TO ANY THIRD PARTY WITHOUT THE WRITTEN PERMISSION OF WICKSTEED LEISURE LTD.



WICKSTEED LEISURE LTD.
 DIGBY STREET, KETTERING
 NORTHANTS NN16 8YJ
 TEL: (01536) 517028
 FAX: (01536) 410633
 e-mail: info@wicksteed.co.uk
 Website: www.wicksteed.co.uk

MATL CODE	
MATL SPEC	
MATL SIZE	
PATT. NO.	

TITLE TAPER LOCK BUSH FITTING & REMOVAL			
DRAWN BY		CHECKED BY	
DATE		DATE	

SCALE	
ISSUE	A
DATE	27/10/17
DWG. NO.	SK-1514

DESPATCH LIST

Product: 6210-071 Inclusive Hand Bike Date of Issue: 12/01/17
 Fitness Legacy Zone

Order No: Issue: A

Item	Unit Qty	Description	Part No.	Checked
1	1	Inclusive Hand Bike Assembly	5104-022	
2	1	BGF upright	5071-031	
3	1	Fixing pack		
4				
5				
6		Pre-assembled Panels		
7	2	Mechanism Cover Panel *	3756-075	
8				
9				
10				
11		Pre-assembled Labels		
12	1	Fitness Instruction Label (Inclusive Hand Bike) *	2910-036	
13				
14				
15				
16				
17				
18				
19				
20				
21				
22				
23				
24		Items marked * to be fitted before despatch		
25				

Total No. of Items

Picked By: _____ Checked By: _____

COMPILED	REV	0				
BY: MC	ECN No.	1752				
DATE: 12/01/17	DATE	12/01/17				
	SIGN	MC				

FIXINGS LIST

Product: 6210-071 Inclusive Hand Bike Date of Issue: 12/01/17
Fitness Legacy Zone

Order No: _____ Issue: A

Item	Unit Qty	Description	Part No.	Checked
1	2	460mm Spragging Iron	3030-310	
2	4	M20 x 55 HT Hex Head Screw	2175-181	
3	4	M20 Washer 2mm Thk	2215-512	
4	4	M20 Spring Washer	2212-206	
5	4	M20 Nyloc Nut	2192-012	
6	4	M20 Nut Cap	2613-021	
7				
8				
9				
10				
11				
12				
13				
14				
15				
16				
17				
18				
19				
20				
21				
22				
23				
24				
25				

Total No. of Items

Picked By: _____ Checked By: _____

COMPILED BY:	MC	REV	0				
		ECN No.	1752				
		DATE	12/01/17				
DATE:	12/01/17	SIGN	MC				