

drostle

art for landscape & architecture

Projects Profile:

Drostle Public Arts Ltd

Studio B, The Lakeside Centre
Bazalgette Way
London, SE2 9AN
United Kingdom

TEL: +44 7719529520
EMAIL: gary@drostle.com
WEB: www.drostle.com





SPRING'08 BISHOPS WALK MOSAIC (exterior 2D)

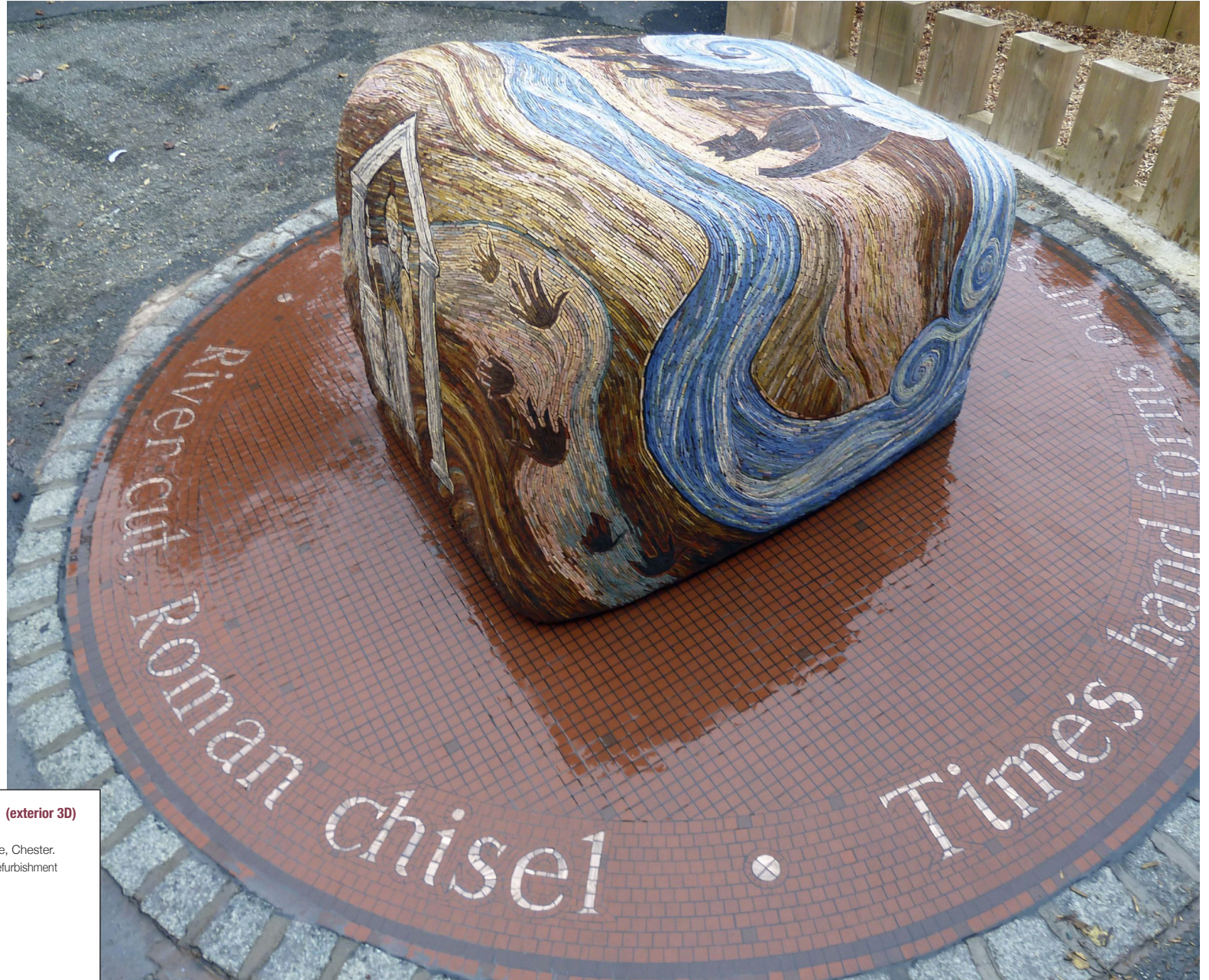
17300 SITE: Valentines Park, Ilford, Essex
PROJECT: Mosaic pavement
COMMUNITY: None
MATERIALS: Unglazed ceramic and glass
COMMISSION: Redbridge Council/Crispin Borst
DIMENSIONS: 3000mm diameter



Connecting histories to today: This project brought together elements of the parks former existence as the residence of the Bishop and later as the home of one of the owners of the East India Company. It also connects the gardens to the 'oldest grape vine' and ancient fossil discoveries.

**Revealing
hidden
histories:**

Echoing the shape of the nearby rock outcrop this work connects the histories of Edgar's park from Primeval fossilised tracks to a Roman quarry, the story of King Edgar and the suppliant kings and the rich salmon fishery of the river Dee.



SUMMER'10 EDGAR'S FIELD MOSAIC

(exterior 3D)

18600



SITE: Edgar's Field Park, Handbridge, Chester.
PROJECT: Mosaic sculpture for park refurbishment
MATERIALS: Unglazed ceramic
COMMISSION: Chester Council
DIMENSIONS: 1m x 2m x 1m



AUTUMN'11 ROMAN GARDEN MOSAIC (exterior 2D)

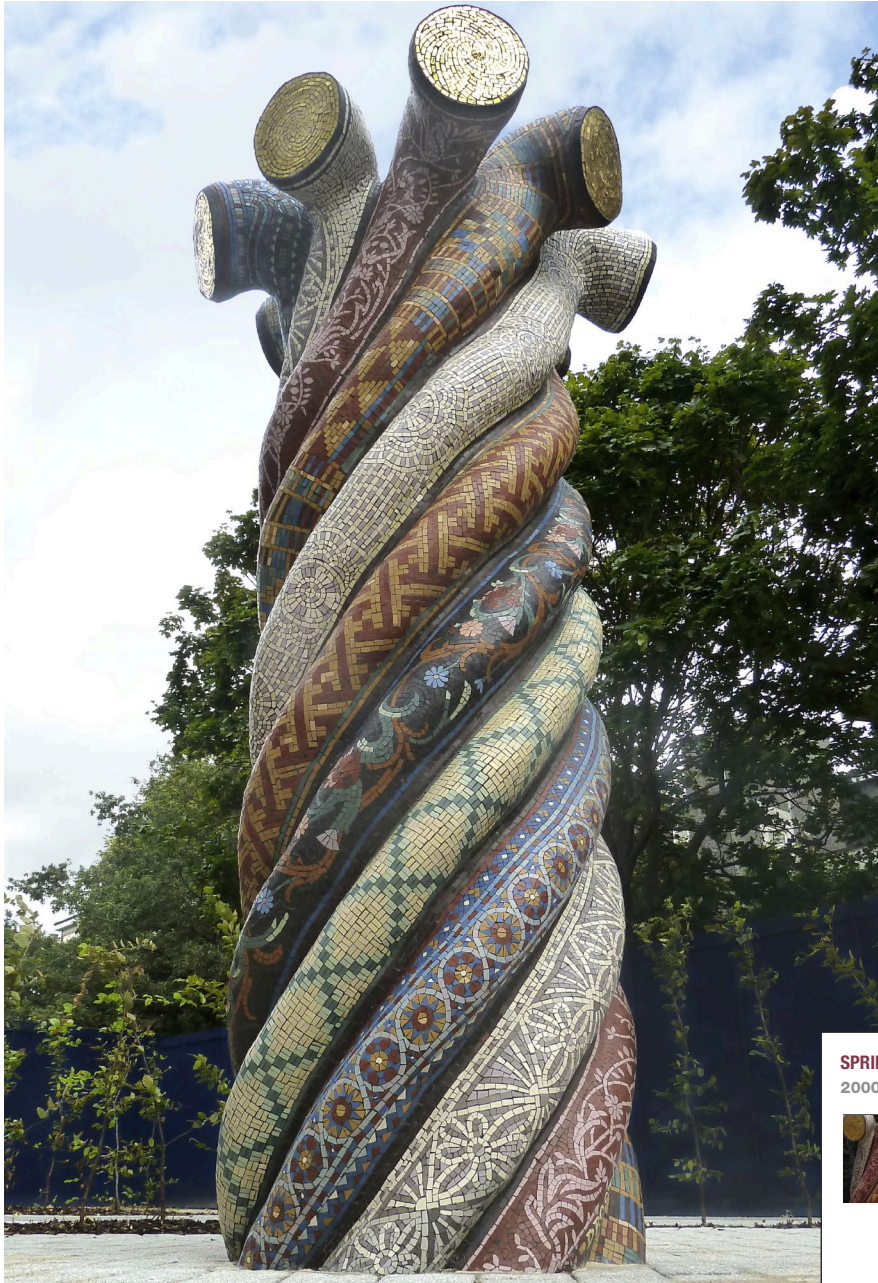
19800



SITE: Roman Garden, Pepper Street, Chester.
PROJECT: Entrance Mosaic for park refurbishment
MATERIALS: Unglazed ceramic, porcelain
COMMISSION: Chester Renaissance
DIMENSIONS: 3m dia

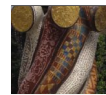
Celebrating our modern connection to an ancient past:

This Roman styled mosaic marks the entrance to Chester's Roman Garden. The mosaic celebrates the idea of the garden for leisure first brought to Britain by the Romans. The mosaic features the Four Seasons with introduced Roman plants and marks



Recognising the strength in a multi cultural community: Located on the site of the main Rope Makers for the London Docks this Rope form mosaic sculpture represents the many different communities that arrived to the area, many of whom found work in the docks or in the local textile factories from the Irish Weavers to the newer Eastern European and Bangladeshi communities. Each strand of the rope represents a different community through it's distinct textile patterns, each keeping it's own identity whilst at the same time strengthening the whole. Other communities represented are: Ashkenazi Jews; French Huguenots; Chinese and West African.

SPRING'12 ENTWINED HISTORIES (exterior 3D)
20000



SITE: Leopold Estate, Poplar, London.
PROJECT: Mosaic Sculpture
MATERIALS: Unglazed ceramic mosaic on GRC
COMMISSION: Poplar HARCA
DIMENSIONS: 850mm x 850mm x 3000mm



SPRING'13 FABRIC OF OUR TOWN (interior 2D)
20300



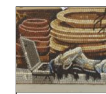
SITE: Haberdashers' School, Crayford, Kent.
PROJECT: Mosaic floor with school pupils
MATERIALS: Unglazed ceramic
COMMISSION: Haberdashers' Aske Schools
DIMENSIONS: 3000 x 6000mm

Celebrating an Industrial past: Designed and constructed with secondary school pupils this Paisley design was inspired by former textile printers that occupied the site before the building of this new school.



Leaving a legacy to be discovered: After the discovery and complete removal of a Saxon Bed burial in Cambridge this mosaic folly was devised to reconnect that removed history to the site and set it in a modern re-imagining of the bed grave with treasures connecting the Saxon to the modern day.

WINTER'16 SAXON GRAVE (exterior 2D)
22300



SITE: Grave excavation site, Cambridge
PROJECT: Mosaic
MATERIALS: Unglazed Ceramic
COMMISSION: MUF Architects
DIMENSIONS: 3.3m x 0.4m

AUTUMN'17 THE ENDURING TANGERINE TREE (exterior 3D)

22700



SITE: Myatt's Field Park, London
PROJECT: Mosaic Column
MATERIALS: Unglazed Ceramic
COMMISSION: Regenter DA
DIMENSIONS: 7m x 0.7m dia

Acknowledging the community: This design began with a story from a local resident, the story of one individual nurturing and growing a tangerine tree. For me this was a symbol of the entire community and it's endurance through care and mutual support. The resulting mosaic column aims to acknowledge that community through archive and personal photos and documents brought together in a collage in which everyone is present



SUMMER'17 DEPTFORD BRIDGE MONUMENT (exterior 2D)
22900



SITE: Heaths Estate, Deptford, London
PROJECT: Mosaic Sundial
MATERIALS: Unglazed Ceramic
COMMISSION: Family Mosaic Housing
DIMENSIONS: 3m dia

Uncovering the site of an ancient battle: Commemorating the site of the last battle on English soil between English and Celtic Cornish forces in 1497 this mosaic sundial bench sits in the plaza of a new housing development. The design is inspired by a Celtic shield pierced by an arrow, with the arrow acting as the sundial gnomon showing the passing of time.



AUTUMN'20 THAMESMEAD PEABODY (exterior 2D)
25400



SITE: Southmere Visitor Centre, London, SE28
PROJECT: Entrance floor mosaics
MATERIALS: Unglazed Ceramic
COMMISSION: Peabody Trust
DIMENSIONS: 3m dia

Celebrating our community and environment: This visitor centre threshold mosaic aimed to celebrate the uniqueness of Thamesmead in south east London with it's concrete brutalist architectural heritage, it's parks, walks and waterways. Wildlife and it's many diverse communities recognised through the dynamic wrap of textile patterns.





SPRING'21 JAMES FURLONG MEMORIAL (exterior 2D)
25700

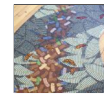


SITE: The Holt School, Playground
PROJECT: Wall memorial mosaic
MATERIALS: Vitreous Glass, Gold and Mirror
COMMISSION: James Furlong Memorial Trust
DIMENSIONS: 3m dia

An act of love and remembrance: This memorial mosaic created for the teacher tragically murdered in the Forbury Gardens attack in 2020 was designed in collaboration with his students. In the design they wanted to celebrate his legacy and values which live on in his students.



SPRING'16 REDWOOD FOREST TRAIL (interior 2D)
19200



SITE: LPCH Hospital, Palo Alto, CA, USA
PROJECT: Mosaic trail and Terrazzo Design
MATERIALS: Unglazed ceramic
COMMISSION: LPCH Palo Alto/Perkins Will
DIMENSIONS: 9 panels over 35m2

An environment of welcome and discovery:

A series of nine floor mosaics set into a winding terrazzo pathway set with cast glass leaves also designed by Gary. This major project aimed to represent a walk through the Redwood forest and the playful discovery of flora and fauna of the local environment along the way.

The design for the entire floor was created for this new build children's hospital and won major awards from: The National Terrazzo & Mosaic Association (USA); The Hamilton Award for Art in Healthcare Environment; FCI Magazine USA Installation Awards Winner Commercial Tile & Stone

SUMMER'08 CARTERTON TOWER SQUARE MOSAIC (exterior 2D)

17800



SITE: Tower Square, Carterton, Oxfordshire
PROJECT: Floor mosaic focal feature
MATERIALS: Unglazed Ceramic and Glass
COMMISSION: Carterton Town Council
DIMENSIONS: 2000mm diameter



A focal feature for town centre square: This playful trompe l'oeil mosaic koi pond forms the central feature of the town square in Carterton, Oxfordshire. Created to enhance the environment and encourage a relaxing and welcoming feeling..