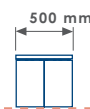
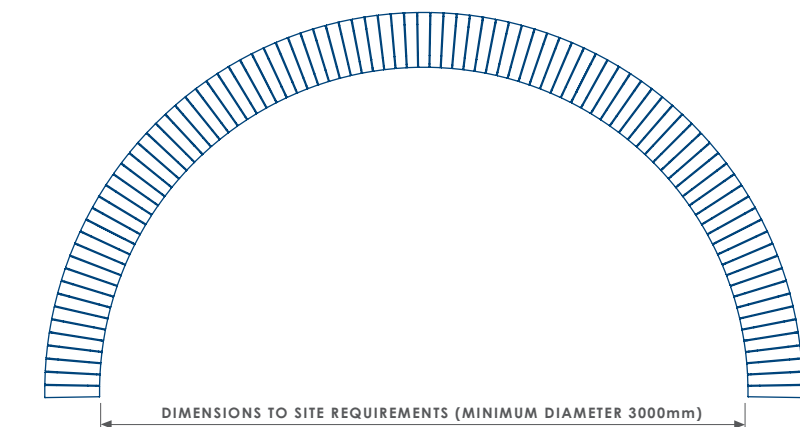




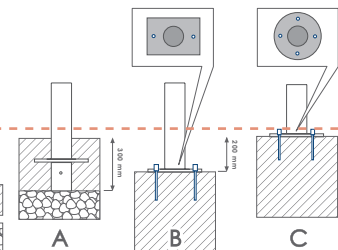
SBN339/C/HI/GL

NOTES

- Site Engineer to determine suitable fixing method.
- Fixing bolts by others - 12 mm dia. holes (use M10 bolts).
- Size of concrete foundation and concrete mix to be determined on site taking ground conditions into account. (Suggested minimum size 450 mm x 450 mm x 450 mm)



FINISHED GRADE



PRODUCT FINISHES

FIXING OPTION: Direct Embedment (A) - Below Ground Base Fix (B) - Surface Mount (C)

SLAT MATERIAL: Treated Redwood Class 4 (TRC4) - Hardwood Iroko (HI)

METAL FINISH: Galvanised (GL) - Galvanised and Powder Coated (GPC)

OTHER OPTIONS: N/A